

# POTTERS PAGES

VOLUME 13 • ISSUE 6 • 2013

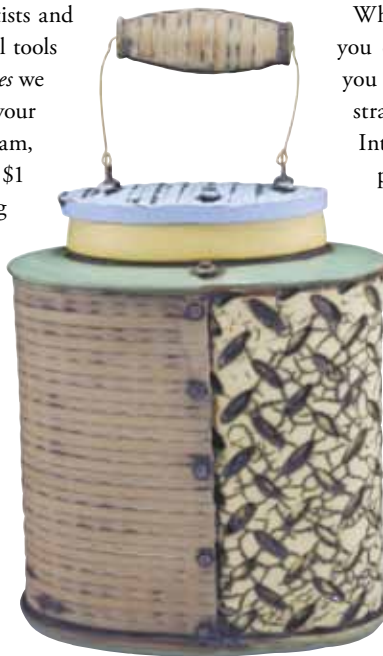
## inspired with instagram

BY LYNSAY R. MEIKLEM, BOARD MEMBER

In a continuing effort to market ourselves as working artists and entrepreneurs, social media platforms can be instrumental tools for growth and inspiration. In the last issue of *Potter's Pages* we discussed the benefits of incorporating Facebook into your marketing strategies. Another online platform, Instagram, was purchased by Facebook in April 2012 to the tune of \$1 billion dollars. An acquisition that large is worth looking into! We all know the old adage, that 'a picture is worth a thousand words' and as artists, our creations speak volumes. Instagram is a way for us to capture our lives, and our pots, in snapshots and share them with the world.

How can this tool help you as a working artist? In an age where many people are making a subtle shift back to our nation's roots, supporting local businesses, neighborhoods, and farmers markets, we are recognizing the similarities in one another over our differences. Our public often wants to know about the potter behind the pottery! Being open about who we are as people establishes trust and draws more customers to our craft.

Instagram allows you to share photos, short videos, and text with your followers. Its unique features allow the user to apply filters to photos which can enhance color saturation, add lighting effects, or blur parts of images. Instagram confines photos to a square shape format similar to old Kodak Polaroid images and allows videos to be compiled into 15-second mini movies. Imagine being able to share a mini movie of unloading fresh new pieces from a fired kiln! Instagram allows us to create a 'buzz' with behind the scenes footage and images of our own process of creation from start to finish.



Artist: Jeremy Randall

When you set up your Instagram account at Instagram.com, you can create a username unique to your business and then you can begin to promote your posts with hashtags - that strange term you've heard being thrown around on TV and the Internet recently. The definition of hashtag is a word or phrase preceded with the symbol #, and is used to identify messages on a specific topic. For instance, I use the hashtag #getcentered and #pottery4life to identify many of the images I post on Instagram. What this does is help to group photos from around the world that have the same hashtags associated with them into a world wide photo album! How is this useful? Many folks search the albums of hashtags they like, which then helps them find individuals they want to 'follow.' The more followers you acquire, the larger your audience becomes. Using hashtags is a way to plug into more than 100 million active Instagram users!

If you do utilize other social media platforms, you can have Instagram feed directly to Facebook, Twitter, and Tumbler. You can make yourself public or private; follow friends, businesses and public figures.

You can 'like' other peoples photos as well as comment on them and you can also add the location where the photo was taken which could be a great way for us potters to promote a studio sale, gallery opening, or gathering of a local group of Potters' Council members!

Even if you choose to forego other social media platforms, give Instagram a try. It can help you maintain an important visual presence and takes a fraction of the time that it takes to update a blog, write a Facebook post, or maintain a website. Instagram is a unique online tool that provides a creative and artsy outlook on the business world.

## HANDBUILDING III

January 17-19, 2014  
Natchez, Mississippi



**Featured Presenters:**

Chandra DeBuse

Jeremy Randall

Amy Sanders

Liz Zlot Summerfield

[www.ceramicartsdaily.org/potters-council/handbuilding-iii](http://www.ceramicartsdaily.org/potters-council/handbuilding-iii)

# letter from the chair:

STEVEN BRANFMAN, Potters Council Board Chair



Hi all, I don't know about you, but it's been a very busy fall for me. My teaching year has gotten off to a strong start, I've been making pots in the studio, and with the good weather we've been

having here in New England, I've been piling on the miles on my bicycle and continuing to catch up on a host of home projects before the winter sets in. I've also been busy with Potters Council work. One of the things we've been focusing on lately is a review of our Potters Council benefit package

in an effort to make membership as advantageous as possible through useful and practical member benefits. Stay tuned for an improved shipping benefit package as well as some offers from pottery suppliers that are in the works.

However, the most important issue that the Advisory Board has had to face is the unfortunate resignation this past summer of our Chair Elect, Eduardo Lazo, due to health reasons. I'm happy to report that Eduardo is well on his way to recovery but has found himself unable to fulfill his Potters Council responsibilities to his personal high standards. After much discussion, the Executive Committee of the Potters Council Advisory Board recommended a two-part solution that was approved by the full board and American Ceramic Society:

1- Kevin Crowe who was the Chair Elect runner up in last year's election be elevated to Chair Elect effective immediately.

2- That given the timing with the officers terms expiring in March giving Kevin an uncomfortably short time as Chair Elect, that I remain as Chair, John Baymore remain as Past Chair, and Kevin continues as Chair Elect through 2014.

I know that John and I are excited to continue our service for another term, and Kevin is excited and honored to assume the position of Chair Elect. You can be sure that a strong team of leaders is in place and that your Potters Council Advisory Board will continue to work hard to make your membership valuable and useful.

As always, suggestions? Questions? Ideas? You know where to find me!

## in the studio



Martha Grover, Potters Council Member

Martha Grover received her MFA from the University of Massachusetts Dartmouth. She is currently a full-time studio potter living in Helena, Montana. Her work can be seen at [www.MarthaGrover.com](http://www.MarthaGrover.com).

### JOINING SLIP RECIPE

- 1 cup vinegar
- Approximately 8 squares of cheap toilet paper
- 1 heaping cup of dry clay in chocolate-chip-sized chunks

Blunge the toilet paper in the vinegar with an immersion blender to break down the paper fibers. Add dry clay and stir lightly with a wood tool until everything is moist. Let the mixture rest overnight. Stir vigorously with a wood tool the next day. The mixture will be foamy and the consistency of sour cream to frosting. Joining slip can be stored almost indefinitely in a covered jar. Add more vinegar if the mixture gets too stiff.

# process

## MAKING PARTS

The act of pouring liquid out of a ceramic vessel is a beautiful dance consisting of flow, line, touch, and

movement. The ewer embodies these actions on a condensed scale. As a potter and choreographer of function, it's a fascinating subject for me to study. At its most basic, a ewer is simply a vessel with a spout and a handle used for pouring liquid. However, ewers are more than just simple pouring pots. They are often very complex forms with intricate details and stunning negative space around the handle, spout, and top opening. For my ewers, I integrate volume, edge, and proportion to create what I intend to be an elegant and useful object.

To make my ewers, I need to create the parts—body, slab bottom, handle, and spout—and then assemble them into a unified whole.

- 1 Create undulating S-shaped curves from the back to the front.
- 2 Make a small indentation at the back to create an extra space behind the handle.
- 3 Flip the piece over and cut out curves with a beveled edge to create feet.
- 4 Press a slightly larger base slab into the bottom edge to impress a seam line. Slip, score, and attach each part.
- 5 Cut a decorative edge into the bottom slab, smooth the edge, then fold it up around the base.
- 6 Cut out an oval/leaf-shaped slab to attach to the top rim on the front side of the vessel.
- 7 Cut down the back edges of the rim into curves and flare out the edges.

8 Using a pre-made template, cut out a slab for a tapered spout.

9 Shape the spout into an S curve by bending the top and puffing out the bottom.

10 Trace the spout connection, cut a small hole, thin out the hole's edges, pull outward to form a sleeve inside the spout.

10 After the spout stiffens, cut the end and trim the inside of the tip to make a sharp pouring edge.

12 Attach a pulled, dog-bone shaped handle to the body by slipping and scoring both ends of the handle and the vessel.

The finished ewer. Once the piece has been slowly dried and bisque fired, it's glazed and fired again to cone 11 in oxidation.



# call for nominations do you have what it takes?

**JOHN BAYMORE, Immediate Past Chair**

If you're ready to start off your national political career on the way to attaining the U.S. Presidency, here's a chance for you to get the ball rolling. I promise you, unlike the recent performance of the U.S. Congress, the **Potters Council Advisory Board** actually does get some things done. Often, this even happens on time!

There's no left wing, right wing, conservatives, moderates, liberals, or other such political camps. In the Potters Council, the only "party" involved here is the one that sometimes happens after the annual NCECA in-person Board meeting. This volunteer Advisory Board is simply a group of committed ceramic artists all wanting to make a bit of a difference in this crazy field we all love by "giving something back".

Yes, Potters Council election time is on the horizon, and that means it is time to put out the **call for nominations** once again. If you have been watching the Potters Council's activities and been thinking of making a contribution to the association, this is your chance to put your thoughts into actions.

As Steven Branfman describes elsewhere in this issue (see *Letter from the Chair*, on page 2), this new election cycle has been impacted by the decisions made by the Advisory Board as a result of Chair Elect Eduardo Lazo's unfortunate resignation due to illness. The upshot on this is that instead of two elected Board positions in this cycle, only one needs to be filled, and there will not be a need to select a new Chair Elect.

So this time around we need to elect one passionate, on-fire, committed, enthusiastic Board member to join us in moving things forward. We need a person who has the time and interest to commit to a small number of teleconference Board meetings each year, to possibly attend one in-person meeting annually (can also use teleconferencing if this is not possible), to spearhead or at least be actively involved in one of the various committee's activities, and to be willing to professionally represent the Potters Council membership's interests. This person can usually bring their personal interests to bear on some existing work, or be the driving force in initiating new endeavors.

It is not hard to start the process. You can simply nominate yourself for consideration to be placed on the voting ballot by the Nominating Committee. If you are "embarrassed" to do that (you shouldn't be), modestly have a friend throw your name into the ring. You can also contribute to the running of this organization by making a suggestion for a person other than yourself who you think would be a solid potential Board candidate.

The Nominating Committee's job is to then take all of the potential candidates and pre-screen them in selecting a membership voting ballot that provides the best possible selection of people for the position. Then the general Advisory Board scrutinizes this list, approves a final version, and puts it out to the general membership for the actual voting process.

So what are you waiting for?

Please email your nominations for the Potters Council Advisory Board member position to me, [JBaymore@compuserve.com](mailto:JBaymore@compuserve.com) no later than December 20, 2013. Be sure to include "PC Advisory Board Nomination" in the email subject line.

Also, when the actual membership elections come around, remember to vote! (-roll patriotic music-)

## MEMBERSHIP BENEFITS INCLUDE: ONLINE RESOURCES [WWW.POTTERSCOUNCIL.ORG](http://WWW.POTTERSCOUNCIL.ORG)

- Members only yearly calendars
- Members only annual juried show
- Mentoring Program
- Online gallery promoting members' work to the public
- Online Artist Portfolios
- Online Member Directory
- *Potters' Pages*, a membership newsletter
- One free ad in *Potters' Pages* newsletter (restrictions apply)

## MEMBERSHIP SAVINGS

- Discount on all Potters Council regional workshops
- 20% discount on one-year subscription to *Ceramics Monthly*
- One free online classified advertisement per year on *Ceramics Monthly* website plus 20% off any subsequent print and online classified advertisements
- 20% discount on one-year subscription to *Pottery Making Illustrated*
- 20% discount on Ceramic Art Books and DVDs

## HEALTH INSURANCE

[WWW.POTTERSCOUNCILHEALTHPLANS.COM](http://WWW.POTTERSCOUNCILHEALTHPLANS.COM)

- Individual health insurance, Traditional PPO Healthplan, PPO "LIGHT" Healthplan and Health Savings Account Insurance plans (US members only)

## GROUP DISCOUNT PROGRAMS

- Discount shipping program, credit card processing and car rentals (US members only)
- Group vision care, hearing, dental, and prescription drug programs (US members only)

# welcome new potters council members

FOR SEPTEMBER AND OCTOBER 2013

## ALABAMA

JO ANNE GENTINE  
LINDA BASSETT

## ALASKA

BARBARA ROLFE  
MARGARET OLSON  
AMY HANKINS

## ARIZONA

LINDA BUSCHMAN  
CAROL COMMINS  
JILL WARNER  
LARRY WARNER  
ROBERT SNYDER  
SAM DUBASIK  
PAULA WEISS  
JEN PRILL

## ARKANSAS

CORINA FEDOROWICZ  
MARIE WAHL  
MARILYN MATTHEWS

## CALIFORNIA

DON NIX  
JOLI GOARD  
MARY RALSTON  
PARA-NI MATTHIESEN  
GINETTE SHER  
MIA LOBEL  
ELAINE RASMUSSEN  
CONSTANCE LS STRYBEL  
NONA WEINER  
KATHY KELLAR  
SUZANNE TUMMARELLO

## COLORADO

SHIRLEY HILL  
EMILIE PARKER

## CONNECTICUT

MONICA BOCK  
DELAWARE  
JANE KAVANAGH MORTON

## FLORIDA

TRACY CANADA  
JEREMY FEINGOLD  
JEANETTE IGOE  
DIANE SRACIC  
JEANETTE IGOE  
JULIE WAAS  
SAMANTHA HELIGMAN  
VIRGINIABETH SHIELDS  
ALLISON LEBARON  
KATHY WAGGONER  
CARLA ENCARNACION

## GEORGIA

HELENE HOLZMAN  
LIBBY DEVINE  
PAT DREW  
CURT COUCH  
MARY ROBERTSON  
LISA DEMPSEY

## IDAHO

DANA HIGBY

## ILLINOIS

DEBI OKNER  
MARCIA WINOGRAD  
MICHAEL PEKLIN  
OLGA SMIRNOV

## INDIANA

MATTHEW CARR

## IOWA

CECELIA LOCK  
GARY SANDS  
KAREN SANDS

## KANSAS

DAVID STURM  
HELEN REA

## MARYLAND

JANIS NEWCOMEN  
REBECCA BEHRE  
DANIELLE KELLOGG  
LISA BARTON  
KIT RUSEAU  
LYNDA CITTA-ROSENTHAL

## MASSACHUSETTS

FAITH TIRENDI  
LIZ HAFEY  
JENNIFER GRAF  
JENNY RANGAN

## MICHIGAN

KRISTEN KEEN  
KARA THOMAS  
AMY HUDSON  
JUDY BREGMAN

## MINNESOTA

EMRYS CURRENT  
KATE MAURY  
JOEL MOLINE  
JERRY DEUSCHLE  
MAE SPENCER  
CAROL BECK

## MISSOURI

JEANNE SMITH  
BOBBY TSO

## MONTANA

NANCY FIELDS  
COURTNEY MURPHY  
JAMIE JONES  
KATHRYN SIMPSON

## NEVADA

H DAVID WOODIN  
SONNY ROSENBERG

## NEW HAMPSHIRE

DINA CODY  
JOHN DADMUN

## NEW JERSEY

LIZ MARCHUK  
KREMENA LEFTEROVA

## NEW MEXICO

TERRE LOVE

## NEW YORK

JUDY OWENS  
DAVIN BUTTERFIELD  
ANN SCHLIFFER  
SUE TOOMEY  
LYNN PADWE  
BONNIE RICHTER

## NORTH CAROLINA

SUZE LINDSAY  
DONNA LYNNE FENNER  
JAMIE DOLLAHAN

## OHIO

LINDA IZOR  
JANA GLASS  
MAYUMI KIEFER  
DAWN POHL  
ELIZABETH HUMPHREY  
APRIL ELNAGGAR  
NAN BURNS  
JANET MONTGOMERY  
BEVERLY GORDON  
DARLA GARAVITO  
WILLIAM BATSTONE  
TODD URBAN  
TAYLOR THOMPSON  
MARCY SZUCS

## OKLAHOMA

AUDREY SCHMITZ

## OREGON

JUNE MILLER  
ELIZABETH KYRISS

## PENNSYLVANIA

KATHY RHOADES  
MARILYN MCCAULEY  
KAREN SACKS  
MARY GALLIGAN  
MONICA PETRUZZI  
CINDY REGINA

## SOUTH CAROLINA

MARY ALICE WOODRUM  
DAVID STUART  
SANDY SINGLETARY  
LAURA DAHLE

## SOUTH DAKOTA

PAM DORNEMAN

## TENNESSEE

AGNES STARK

## TEXAS

PAT MEHERIUK  
LAURA HALL

## VERMONT

DOROTHY DANFORTH  
LISA YAFFEE

## VIRGINIA

PAM BUTLER  
SANDRA WALKER  
MATT DANIELSON  
PATRICIA MILLER  
SUSAN DOUGLAS  
MEREDITH SZUCS

## WASHINGTON

KEN TURNER  
BARRY FISHMAN  
ANNIE HANCOCK  
SUSAN GUNDERSON  
KRIS SHAPIRO

## WEST VIRGINIA

LINDA KNOWLES  
JOE BUTTA  
SUZANNE MOORE  
SUSAN HOFSTETTER

## WISCONSIN

JOHN BOWERS  
LYNN WHITE  
JOHN DIETRICH  
CAROL NAUGHTON  
LORI GRAMLING  
RICHARD MEAUX

## INTERNATIONAL

AUSTRALIA  
CATHERINE GULI  
PATSY CARPENTER

## CANADA

LINDA CHERNEY

## ENGLAND

JOLANTA JUNG  
ARABELLA ROSS

## INDONESIA

HILLARY KANE

## IRELAND

CLARE CARON

## NEW ZELAND

LESLEY STEEPLES  
MADHU BHANA

## NORWAY

LILL ISAKSEN

## SOUTH AFRICA

CAROLINE MENELL

## SWEDEN

HELEN BLDSTA

## OFFICERS

### 2013-2014 CHAIR

Steven Branfman  
Needham, MA  
sbranfspots@aol.com

### 2013-2014 CHAIR ELECT

Kevin Crowe  
Amherst, VA  
tyeriverpottery@aol.com

### 2013-2014 PAST CHAIR

John Baymore  
Wilton, NH  
jbaymore@compuserve.com

## BOARD MEMBERS

Lori Leary  
Decatur, GA  
lorialeary@gmail.com

Lyndsay Meiklem  
Bozrah, CT  
meiklemkilnworks@yahoo.com

Diana Pancioli  
Ypsilanti, MI  
dianamp@comcast.net

Shirley Potter  
Boise, ID  
sapotter@q.com

## THE AMERICAN CERAMIC SOCIETY STAFF LIAISON

Carolyn Dorr  
Westerville, OH  
cdorr@ceramics.org

## NEWSLETTER STAFF

### EDITOR

Carolyn Dorr  
cdorr@ceramics.org

## DIGITAL DESIGN SPECIALIST

Melissa Bury  
mbury@ceramics.org

# 2013 and 2014 events/exhibitions

## **TUCSON, AZ, SEPTEMBER 1–DECEMBER 1**

“Mary Anne Lisney Classes,” at Romero House Pottery, 102 W. Classes for beginner to advance offered in four, or eight week sessions. Raku, glazing techniques, sculpture, and handbuilding included at the historic Romero House Pottery on the campus of the Tucson Museum of Art. Contact Mary Anne Lisney at [zumaron@comcast.net](mailto:zumaron@comcast.net) for more information.

## **LA CRUCES, NM, SEPTEMBER 6–NOVEMBER 9**

“From the Ground Up XXVI,” at the Las Cruces Museum of Art, Main St. Juried Exhibition, for information on applications contact Joy Miller at [jmiller@las-cruces.org](mailto:jmiller@las-cruces.org) or 575-541-221. Submission deadline: postmarked no later than Friday, May 17, 2013. Visit [www.las-cruces.org](http://www.las-cruces.org) for more information.

## **HONOLULU, HI, SEPTEMBER 19–NOVEMBER 24**

“Artist of Hawaii 2013,” at the Honolulu Museum of Art. Roberta Griffith will be exhibiting three installations, including a new mixed-media one created for the exhibition, as well as three monotypes, each of which relate to one of the installations. In this body of work, Roberta makes reference to human mortality through the concept of play and toys. One installation is made entirely of porcelain, while two of them combine mixed-media materials, such as brushed steel or wood, but are composed primarily of clay. The ceramic objects are a metaphor for the detritus of broken toys, broken lives, and unfulfilled promise, whether from politics, strife, wars, human intervention or natural disasters. Go to [www.honolulumuseum.org](http://www.honolulumuseum.org) for more information.

## **SHARPS CHAPEL, TN, OCTOBER 4-30**

“Faces, Places, and Beyond,” at The Emporium Gallery, 100 S. Gay St. Artists Pat Clapsaddle and Marta Goebel-Pietrast show their majolica pottery, depicting hand-painted scenes of people, animals, and places and surreal paintings of the same subjects. Contact Pat Clapsaddle at [patclapsaddle@hotmail.com](mailto:patclapsaddle@hotmail.com) or visit Pat Clapsaddle Pottery on Facebook for a preview of the works or view the invitation in the October newsletter for the Emporium at [www.theemporiumcenter.com](http://www.theemporiumcenter.com).

## **ISTANBUL, TURKEY, OCTOBER 9–NOVEMBER 3**

“Cluj Int. Ceramics Bienalle (CICB 2013) 1<sup>st</sup> Edition,” at Museum of Art Cluj Napoca, Romania. Elhan Ergin has been selected by the international jury to participate at Cluj Int. Ceramic Bienale 2013. She is honored to be a participant at the first annual biennale, which is organized by Ceramart Foundation and Ceramics, now in partnership with the Museum of Art Cluj-Napoca, University of Arts & Design Cluj Napoca and Romanian Fine Artists Union. Contact Vasi Hirdo at [vasihirdo@ceramicsbienale.com](mailto:vasihirdo@ceramicsbienale.com) for more information.

## **GROVE CITY, PN, OCTOBER 22–NOVEMBER 16**

“Michael Stek Ceramics,” at Pew Fine Arts Gallery, Grove City College, 100 Campus Drive. Artists Michael Stek will have both functional and non-functional forms in this exhibition. For more information contact Kathy Rhoades at [rhoadeskj@gcc.edu](mailto:rhoadeskj@gcc.edu) for more information.

## **WORCESTER, MA, OCTOBER 24–NOVEMBER 16**

“Fireworks @10: A 10<sup>th</sup> Anniversary Exhibition,” at Worcester Center for Crafts, 25 Sagamore Rd. Contact Jill Burns at [thefireworksinc@yahoo.com](mailto:thefireworksinc@yahoo.com) or visit [www.worcester.edu/WCC/Shared%20Documents/krikoriangallery.aspx](http://www.worcester.edu/WCC/Shared%20Documents/krikoriangallery.aspx) for more information.

## **ONTARIO, CANADA, OCTOBER 25–NOVEMBER 4**

“Petrified Forest,” at OSA Gallery at Shenkman Arts Centre, 245 Centrum Boulevard, Ottawa, K1E0A1. Exhibition of ceramic sculptures inspired by the beauty and function of trees as a statement against further worldwide deforestation. Contact Hilde Lambrechts at [hilde@H-art.ca](mailto:hilde@H-art.ca) for more information.

## **DENVER, CO, NOVEMBER 1–30**

“Edges,” at Plinth Gallery. Artists David Crane’s work investigates the integration of form and geometric patterned glaze surfaces. His pottery is generally wheel thrown and altered, then fired to a high temperature in a salt kiln. His surface treatments use glazes and various resist techniques to define geometric patterns with clear, sharp boundaries, creating distinct “edges.” Contact Jonathan Kaplan at [jonathan@plinthgallery.com](mailto:jonathan@plinthgallery.com) for more information.

## **FAIRHOPE, AL, NOVEMBER 1–30**

“Two Separate Styles, One Couple,” at 60 North Section St. Artists Steve Loucks and Lynnette Hesser will demonstrate their different techniques. Go to [www.thekilnstudio.com](http://www.thekilnstudio.com) for more information.

## **ONTARIO, CANADA, NOVEMBER 19–DECEMBER 1**

“Figureworks 2013,” at Saint - Brigid’s Centre for the Arts, 310 Saint-Patrick Street, Ottawa, K1N5K4. Figureworks 2013 is calling for submissions for its fourth exhibition to artists who work with the human form as their subject matter. Submission deadline is October 3, 2013. Contact Hilde Lambrechts at [Hilde@figureworks.org](mailto:Hilde@figureworks.org) or visit [www.figureworks.org](http://www.figureworks.org) for more information.

## **JOPLIN, MO, NOVEMBER 21**

“Second Annual Joplin Area Empty Bowls Fundraiser,” at Phoenix Fired Art, 1603 S. Main St., 11–8pm. Soup and bread donated by 15 local restaurants. Specialty bowl auction raffle. Choose from large selection of handmade bowls and soup for minimum donation of \$15, which will be divided between Crosslines food pantry, Salvation Army, and Watered Garden. Corporate sponsorship by SMB, Empire Electric Co., and Leggett and Platt. Contact Heather Grills at [phoenixfiredart@gmail.com](mailto:phoenixfiredart@gmail.com) for more information.

## **NEW HARMONY, IN, NOVEMBER 23–DECEMBER 27**

“Solo Exhibition, ceramics,” at New Harmony Gallery of Contemporary Art, 506 Main St. Solo exhibition of artist Alisa Holen. Opening reception November 23, 4–7pm. Contact Sarah Rhodes, Senior Gallery Associate at [skrholdes@usi.edu](mailto:skrholdes@usi.edu) or visit [www.nhgallery.com](http://www.nhgallery.com) for more information.

## **NEEDHAM, MA, DECEMBER 7–8**

“Potters Shop & School, Gorse Mill Winter Open Studios,” at Gorse Mill Studios, 31 Thorpe Road. Gorse Mill Studios is home to 33 artist studios and a central shared gallery. The Open Studio event will feature an exhibition on our gallery and a schedule of demonstrations throughout the weekend. Visit [www.thepottersshop.com](http://www.thepottersshop.com) for more information.

## **SEA GROVE, NC, DECEMBER 14**

“Bulldog Pottery Holiday Kiln Opening,” at Bulldog Pottery, 3306 US Hwy 220 Alt. 10–5pm. Artists Samantha Henneke and Bruce Gholson will attend the event. Visit [www.bulldogpottery.com](http://www.bulldogpottery.com) for more information.

### NATCHEZ, MS, JANUARY 17-19, 2014

**"HANDBUILDING III,"** at Eola Hotel, 110 Pearl Street. Presentors are: Chandra DeBuse, Jeremy Randall, Amy Sanders, and Liz Zlot Summerfield. This conference is open to artists at all levels, register today by calling 800-424-8698 or visit [www.ceramicartsdaily.org/potters-council/handbuilding-iii/](http://www.ceramicartsdaily.org/potters-council/handbuilding-iii/) for more information.

### ASHEBORO, NC, MARCH 7-9, 2014

"North Carolina Potters Conference," at Randolph Arts Guild, 123 Sunset Avenue. Demonstrators are John Gill, Michele Erickson, and Mark Shapiro. Presenters are Robert Hunter, William Carty, Brian Jones, and Ben Carter. All the demonstrations and presentations are scheduled for the entire group. Potters at any skill level will come away with new ideas and inspiration to improve their work. Visit [www.randolphartsguild.com](http://www.randolphartsguild.com) for more information or call 336-629-0399.

### CERTALDO, ITALY, APRIL 20-26, 2014

"Porcelain: Color and Light," at the La Meridiana International School of Ceramic Art in Tuscany. Event will celebrate the beauty and magic of light as it accentuates color, expands form, and energizes surfaces in translucent porcelain. Contact Claudia Bruhin at [claudia@lameridiana.fi.it](mailto:claudia@lameridiana.fi.it) or visit [www.lameridiana.fi.it](http://www.lameridiana.fi.it) for more information.

### CERTALDO, ITALY, JUNE 8-21, 2014

"Shape, Paddle and Pasta!" at the La Meridiana International School of Ceramic Art in Tuscany. Learn how to design, create, and install large garden pieces like a fountain, arch, columns, and birdbaths. For a description see [www.archi-terracotta.com](http://www.archi-terracotta.com) or call Stephani Stephenson in the US for more info at 520-686-9451 or Marcia Selsor at 956 541-6232. For contact in Italy, go to Claudia Bruhin at [claudia@lameridiana.fi.it](mailto:claudia@lameridiana.fi.it) or visit [www.lameridiana.fi.it](http://www.lameridiana.fi.it) for more information.

### ZANESVILLE, OH, JULY 15, 2014

"Call for Entries: From the Ground Up" at the Zanesville Ohio Contemporary Ceramics. Show begins October 10-12, 2014. **BEST IN SHOW RECEIVES \$20,000.** For more information visit [www.zanesvilleprize.org](http://www.zanesvilleprize.org) for more information.

### CERTALDO, ITALY, SEPTEMBER 16-27, 2014

"Fun in the Italian Mud," at the La Meridiana International School of Ceramic Art in Tuscany. The Italian pottery tour itinerary provides time for workshop activities as well as sightseeing and enjoying the beautiful Tuscan countryside. Our pottery workshop will cover throwing on the wheel, creating sculpture, portraiture, understanding glazing and firing, and ends with our own exhibition. Contact Cathy Lawley at [cathy@friedmudd.com](mailto:cathy@friedmudd.com) or visit [www.friedmudd.com](http://www.friedmudd.com) for more information.

## FOR SALE

- ▶ 55 cubic ft. down draft cone 10 gas kiln, in excellent condition.
- ▶ Bolted angle iron double walls with soft firebrick interior, hard firebrick exterior.
- ▶ Accommodates 12"x 24" x 1" shelves, three deep.
- ▶ Some kiln furniture included.

**\$2,400.00**

Call Stormie Parker  
817-915-6724 Fort Worth, TX  
[stormie@windstormpottery.com](mailto:stormie@windstormpottery.com)

## FOR RENT

### LIVE/WORK STUDIO FOR RENT IN SAN MIGUEL DE ALLENDE, MEXICO

Immerse yourself in your work and the vibrant Mexican culture.

CHARMING artist's LIVE/WORK space with shared GALLERY: **\$1,200 USD/month.**

[joanelena@hotmail.com](mailto:joanelena@hotmail.com)  
[www.joanelenagoldberg.com](http://www.joanelenagoldberg.com)  
Ceramic Sculpture & Classes

## SIGN UP HERE TO BE A MENTOR



<http://ceramicartsdaily.org/potters-council-members/potters-council-mentoring-program/>



Stainless Steel Profile Ribs WiziWigTools.com

## Boots for my Journey

A two Day Ceramics  
Workshop Celebrating  
Our Life's Walk

With artist, *Liisa Rahkonen*, on the  
beautiful Oregon Coast



Melany Berry "Joy Shoes"

NO CERAMICS EXPERIENCE NECESSARY  
• [WWW.LIISARAHKONEN.COM](http://WWW.LIISARAHKONEN.COM)  
Call to schedule a class: 541-992-5911