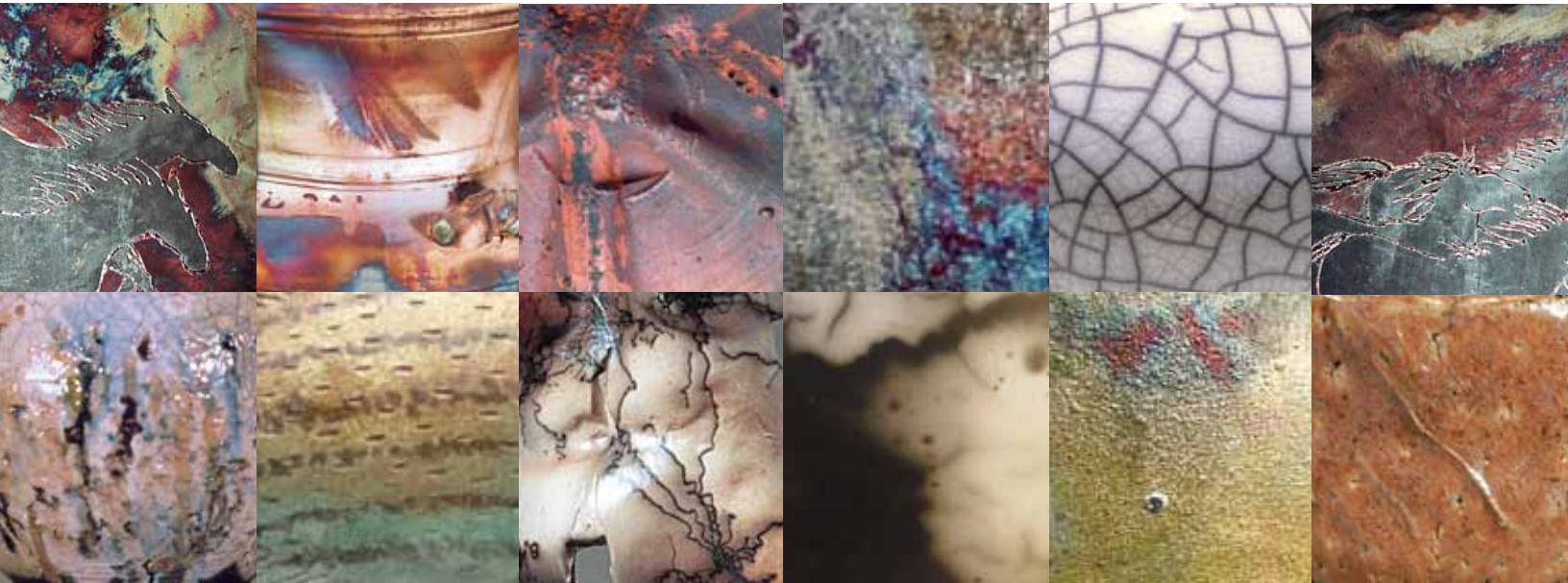


15 tried & true raku glaze recipes



recipe cards for our
favorite raku pottery glazes



This special report is brought to you with the support of Laguna Clay Company

CONTENTS

Good news for those of you who raku fire and are looking for some new glazes and slips to try out! We've gathered some of our favorite raku glaze recipes in a convenient recipe-card format, perfect for printing and taking to the pottery studio. If you are interested in building a collection of beautiful raku ceramic glazes, or adding variety to the ones you already have, you've found the perfect resource. We have a great assortment including several copper matts, a white crackle and even a shino! Maybe you already have a repertoire of glazes but want to mix it up a bit; try experimenting with a flashing slip or a terra sigillata for a variety of surfaces in the post-reduction firing. Or combine several of the slips and glazes to expand your surface possibilities even further!

And remember, as with all things ceramic: results may vary! Use the various images here as a guide to the surfaces you'll get, but be sure to always start out with small batches and have fun testing and tweaking! Now get out there and mix up some new pottery glazes!

15 TRIED & TRUE RAKU GLAZE RECIPES

Red/Bronze Raku Glaze

Hasselle Copper Matte

Rainbow Sand

Copper Sand #3 - Tom Buck

Silver Cloud Fat Crackle White

Ferguson's White Crackle

Kelley's Low-Fire Shino

Alligator Matte White

Riggs Terra Sigillata

Peel-Away Slip

Copper Matte

Reynolds Wrap

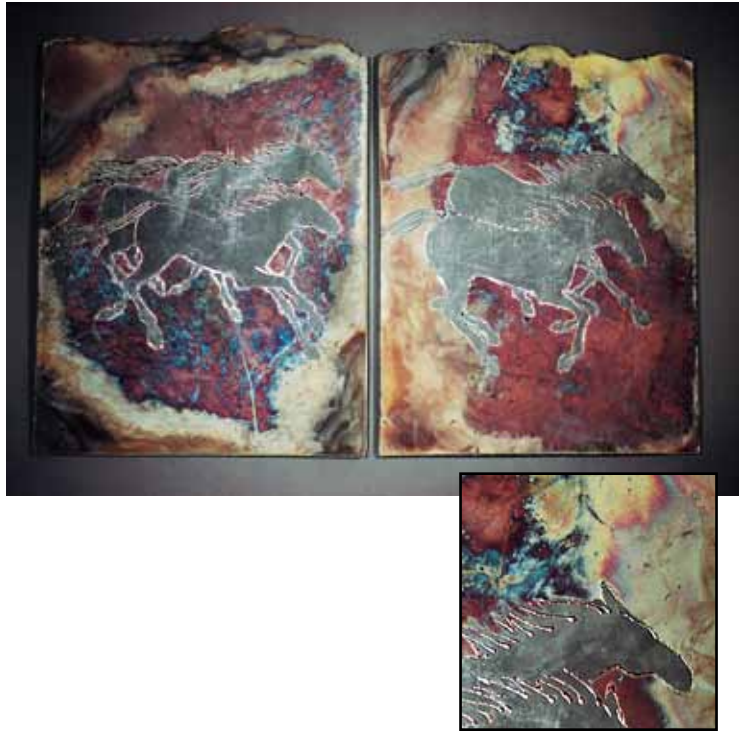
Post Pac Man

Rogers White (clear)

Yellow



RAKU



Red/Bronze Raku Glaze

Cone 05

Colemanite	50.0 %
Ferro Frit 3134	50.0
	100.0 %

Add: Tin Oxide	5.1 %
Copper Carbonate	5.6 %

From *Raku Firing: Advanced Techniques*

Note: Colemanite is no longer mined so you will need to test either Gerstley borate or a boron frit as a substitute.

RAKU



RAKU



Hasselle Copper Matte

Black Copper Oxide	80 %
Ball Clay	20
	100 %

Add: Bentonite	3 %
----------------------	-----

From *Raku Firing: Advanced Techniques*

RAKU

RAKU



Rainbow Sand

Bone Ash	18 %
Gerstley Borate	71
Lithium Carbonate	2
Nepheline Syenite	9
	<u>100 %</u>
Add: Copper Carbonate	5%
Cobalt Carbonate	3%

RAKU



RAKU



Copper Sand #3 – Tom Buck

Bone Ash	14.0 %
Gerstley Borate	19.5
Talc	2.5
Ferro Frit 3195	64.0
	<u>100.0 %</u>
Add: Colbalt Carbonate	2.5 %
Copper Carbonate	4.9 %

Silver Cloud Fat Crackle White

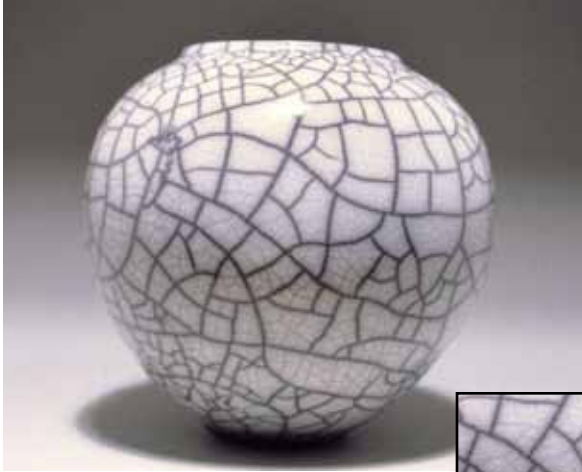
Ferro Frit 3134	90.0 %
Kaolin	10.0
	<u>100.0 %</u>
Add: Zircopax	10.0 %

RAKU

Egret: Copper Sand #3 background,
Silver Cloud Fat White for body

RAKU

Ferguson's White Crackle



Gerstley Borate	65 %
Tin Oxide	10
Nepheline Syenite	15
Tennessee Ball Clay	5
Silica	5
	<hr/>
	100 %

From *Raku, Pit & Barrel: Firing Techniques*

RAKU



RAKU

Kelley's Low-Fire Shino



Teabowl with Kelley's Low-Fire Shino, by Steven Branfman.

Lithium Carbonate	26 %
Nepheline Syenite	64
EPK Kaolin	10
	<hr/>
	100 %

Add: Light Rutile	6.0 %
Manganese Carbonate	0.5 %

This is a semi-opaque glaze with an excellent crackle texture and tan to silvery color characteristics, depending on firing temp. Works well in combination with other glazes.

From *Raku, Pit & Barrel: Firing Techniques*

RAKU

RAKU



Alligator Matt White

Cone 05

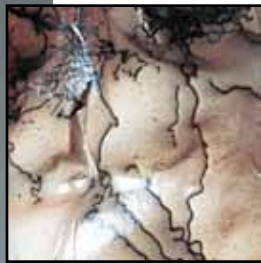
Bone Ash	29%
Gerstley Borate	57
Nepheline Syenite	14
	<hr/> 100%

From *Raku, Pit & Barrel: Firing Techniques*

RAKU



RAKU



Riggs Terra Sigillata

Water	3½ gal
Sodium Silicate	1 tbsp
Soda Ash	1 tbsp
XX Saggar Clay	15 lbs

Mix ingredients and allow to sit and separate into visual sections. Gently siphon out only the middle section for use.

From *Raku, Pit & Barrel: Firing Techniques*

RAKU

RAKU



Peel-Away Slip

Fireclay	60 %
Kaolin	20
Silica	15
Grog (fine)	5
	<u>100 %</u>

Mix the slip to the consistency of pudding and apply. The slip will crack and during post-firing reduction reveal a smoke pattern when peeled off.

From *Raku, Pit & Barrel: Firing Techniques*.

RAKU



RAKU



Diptych, Copper Matt background with Reynolds Wrap lines.

Copper Matte

Bone Ash	17 %
Gerstley Borate	66
Nepheline Syenite	17
	<u>100 %</u>

Add: Copper Carbonate 6 %
Cobalt Carbonate 2.5%

Reynolds Wrap

Bone Ash	23.3%
Gerstley Borate	36.1
Nepheline Syenite	21.3
Copper Carbonate	21.3
	<u>100.0%</u>

Add: Red Iron Oxide 1.8%
Bentonite 35.0%

RAKU

RAKU



Gold Crane, Post Pac Man and resist, no glaze for the black.

Post Pac Man

Bone Ash	14.5 %
Gerstley Borate	71.0
Nepheline Syenite	14.5
	<u>100.0 %</u>

Add: Copper Carbonate	14.5 %
Red Iron Oxide	0.1 %
Manganese Dioxide	0.1 %

RAKU



RAKU



Rogers White with brushes of Del Favero Luster. Embedded glass.

Rogers White (clear)

Cone 08

Gerstley Borate	60 %
Spodumene	35
Tennessee Ball Clay	5
	<u>100 %</u>

Yellow

Cone 08

Gerstley Borate	80 %
Cornwall Stone	20
	<u>100 %</u>

Add: Vanadium Stain 6 %

The depth of yellow will vary depending on the stain you use. Add up to 5% tin oxide for a more opaque quality.

From *Raku Firing: Advanced Techniques*

RAKU

Gerstley Borate

Alumin
Found
Bentol
Chrom
Cobalt
Lincol
Iron Cl
Kaolin
New Z
Lithium



Bell Dark Ball Clay, Dresden Ball Clay, OM 4 Ball Clay, Barium Carbonate, Ash, Boric Acid, Calcium Carbonate, Cobalt Carbonate, Cobalt Oxide, Copper Oxide, Cryolite, Dextrin, Dolomite, Fluorspar, Grog, Gum Arabic, Ilmenite, Red NR Iron Oxide, Yellow Iron Oxide, K, Glowmax LL, Kingsley, MacNairite, Kyanite, Lignin, Lithium Carbonate, Caliod, Magnesium Oxide, Mangan

Knowing what and when to buy and having the means to do so is the key to being a trustworthy supplier. Laguna Clay Company has **800 + tons of Gerstley Borate**. It is of a consistent chemical composition and is available now along with hundreds of other raw materials you need.

Visit our Gerstley Glaze resource at http://www.lagunaclay.com/support/pdf/Gerstley_Borate_Glaze_Resource.pdf for glaze formulas and Gerstley Borate tips.



info@lagunaclay.com

www.Lagunaclay.com

800-4LAGUNA