

2024 gallery guide

United States galleries are listed alphabetically by state, district or commonwealth, then cities within the state. International galleries are listed by country, state or province, and city. Contact information has been included to allow you to check current offerings and hours before visiting. To help us make the guide more comprehensive, please send information about exhibition venues via our Gallery Guide submission form (online at www.ceramicsmonthly.org) or via email to editorial@ceramicsmonthly.org.



1 Katsumata Chieko's biomorphic vessel, 15 in. (38 cm) in width, stoneware, matte orange, turquoise and white glazes, 2007. This piece was on view at Joan B Mirviss LTD (www.mirviss.com) in New York, New York, January 20–29, 2023. **2** Rebecca Hutchinson's *Re-Generation* (installation), 34 ft. (10 m) in width, unfired paperclay, upcycled book pages, willow, ink. This piece was on view at the Everson Museum of Art (everson.org) in Syracuse, New York, September 3–December 31, 2022.

Alabama

Red Dot Gallery

Birmingham, AL; reddotgallery.com

Primarily exhibiting contemporary ceramics; functional and sculptural works; representing 2 clay artists.

The Kiln Studio and Gallery

Fairhope, AL; www.thekilnstudio.com

Primarily exhibiting contemporary ceramics; functional, sculptural, figurative, and installation works; representing 20 clay artists.

Designbyhart Pottery Studio and Gallery

Huntsville, AL; www.designbyhartpottery.com

Primarily exhibiting contemporary ceramics; functional and sculptural works; representing 11 clay artists.

Arizona

Eide Art Gallery 465

Clarkdale, AZ; www.eidefineart.com

Primarily exhibiting contemporary ceramics; sculptural, functional, and figurative works.

Mesa Arts Center/ Mesa Contemporary Arts Museum

Mesa, AZ; www.mesaartscenter.com

Primarily exhibiting contemporary ceramics; functional works.

Eye Lounge Contemporary Arts Space

Phoenix, AZ; www.eyelounge.com

Primarily exhibiting contemporary ceramics; sculptural works; representing 4 clay artists.

King Galleries

Scottsdale, AZ; www.kingalleries.com

Primarily exhibiting historical and contemporary ceramics; sculptural works; Native American ceramic artwork; representing 10 clay artists.

ASU Art Museum Ceramics Research Center

Tempe, AZ; asuartmuseum.asu.edu

Primarily exhibiting historic and contemporary ceramics; functional and sculptural works.

Romero House Potters Inc.

Tucson, AZ 85701; www.romerohousepotters.org

Primarily exhibiting contemporary ceramics; functional, sculptural, and figurative works; representing 20 clay artists.

Sabino Stoneware Pottery

Tucson, AZ; www.sabinopottery.com

Representing 1 clay artist.

Arkansas

The Gallery at Terra Studios

Fayetteville, AR; www.usingart.org

Primarily exhibiting contemporary ceramics; functional and sculptural works; artists living in Arkansas; representing 90 clay artists.

Fort Smith Regional Art Museum

Fort Smith, AR; www.fsrsm.org

Primarily exhibiting contemporary ceramics; 1 permanent exhibit; representing 3 clay artists.

Arkansas Museum of Fine Arts

Little Rock, AR; www.arkmfa.org

Primarily exhibiting contemporary ceramics; functional and figurative works; contemporary crafts; representing 1 clay artist.

California

Soka University, Founders Hall Art Gallery

Aliso Viejo, CA; www.soka.edu/founders-gallery
Primarily exhibiting contemporary ceramics.

Fire Arts Center

Arcata, CA; www.fireartsarcata.com
Primarily exhibiting contemporary ceramics; functional, sculptural, and figurative works; porcelain, stoneware, high-fire and mid-range works; representing 80 clay artists.

Santa Cruz Mountains Art Center

Ben Lomond, CA; www.mountaintartcenter.org
Primarily exhibiting contemporary ceramics; functional, sculptural, figurative, and installation works; representing 15+ clay artists.

TRAX Gallery

Berkeley, CA; www.traxgallery.com
Primarily exhibiting contemporary ceramics; functional works; pots for use with food or decorative: for the table; representing 17 clay artists.

Ruth Chandler Williamson Gallery, Scripps College

Claremont, CA; rcwg.scrippscollege.edu
Primarily exhibiting contemporary ceramics; sculptural, functional, and figurative works; mid-century ceramics.

Clay Mix

Fresno, CA; www.clay-mix.com
Primarily exhibiting contemporary ceramics; functional, sculptural, figurative, and installation works.

A New Leaf Gallery | Sculpturesite

Glen Ellen, CA; www.sculpturesite.com
Primarily exhibiting contemporary ceramics; sculptural and figurative works.

Art Honors Life Projects at FUNERIA

Graton, CA; www.funeria.com
Primarily exhibiting contemporary ceramics; functional, sculptural, figurative, and installation works; funerary urns, vessels, reliquaries, and personal memorial art; representing 15 clay artists.

Craft Contemporary

Los Angeles, CA; www.craftcontemporary.org
Primarily exhibiting contemporary sculptural and installation-based ceramics; representing 1 clay artist.

Craft in America Center

Los Angeles, CA; www.craftinamerica.org/center
Primarily exhibiting contemporary ceramics; functional, sculptural, figurative, and installation works.

Edward Cella Art+Architecture

Los Angeles, CA; www.edwardcella.com
Primarily exhibiting contemporary and historical ceramics; sculptural works; representing 3 clay artists.

Freehand Gallery

Los Angeles, CA; www.freehand.com
Primarily exhibiting contemporary ceramics; functional works; American artists; representing 20+ clay artists.

Mendocino Art Center

Mendocino, CA; www.mendocinoartcenter.org
Primarily exhibiting contemporary ceramics; sculptural and functional works; representing 15 clay artists.

The Main Gallery

Menlo Park, CA; www.themaingallery.org
Primarily exhibiting contemporary ceramics; functional and sculptural works; representing 2 clay artists.

Beatrice Wood Center for the Arts

Ojai, CA; www.beatricewood.com
Primarily exhibiting contemporary and historical ceramics;

functional and sculptural works; permanent collection of Beatrice Wood's works.

Silica Studios

Palm Springs, CA; www.silicastudios.com
Primarily exhibiting contemporary ceramics; functional, sculptural, and figurative works; contemporary southern California ceramic artists; representing 20+ clay artists.

Xiem Gallery

Pasadena, CA; www.xiemclaycenter.com
Primarily exhibiting contemporary ceramics; functional, sculptural, and figurative works; established and emerging local artists; representing 50 clay artists.

MazAmar Art Pottery

Pioneertown, CA; www.mazamar.com
Primarily exhibiting contemporary ceramics; sculptural, and figurative works; representing 9 clay artists.

American Museum of Ceramic Art

Pomona, CA; www.amoca.org
Primarily exhibiting historical and contemporary ceramics; functional, sculptural, and production ceramics; representing 1000+ clay artists.

Blue Line Arts

Roseville, CA; www.bluelinearts.org
Primarily exhibiting contemporary ceramics; functional, sculptural, and figurative works; representing 20+ clay artists.

Crocker Art Museum

Sacramento, CA; www.crockerartmuseum.org
Primarily exhibiting historical and contemporary ceramics; functional, sculptural, and figurative works; American studio ceramics since 1945, Funk, contemporary studio practices, and Southwest pottery; international ceramics including British, Danish, German, and Japanese; historic Korean, Goryeo Period, early Meissen porcelain, Asian trade ceramics; representing 800+ clay artists.

Mingei International Museum, Balboa Park

San Diego, CA; www.mingei.org
Primarily exhibiting contemporary and historical ceramics.

San Diego Potters' Guild, Studio 29, Spanish Village, Balboa Park

San Diego, CA; www.sandiegopottersguild.org
Primarily exhibiting contemporary ceramics; functional works; representing 20+ clay artists.

San Diego Sculptors Guild and Gallery

San Diego, CA; www.sandiegosculptorsguild.com
Representing 21 clay artists.

BusaccaGallery.com Art Consignment

San Francisco, CA; www.instagram.com/markbusaccaartcollections
Representing 100 clay artists.

Catharine Clark Gallery

San Francisco, CA; www.cclarkgallery.com
Primarily exhibiting contemporary ceramics; sculptural and figurative works; representing 1 clay artist.

de Young Museum

San Francisco, CA; www.famsf.org
Primarily exhibiting contemporary and historical ceramics; sculptural and figurative works; post-WWII American studio craft, including ceramics; representing 100 clay artists.

Museum of Craft+Design

San Francisco, CA; www.sfmcd.org
Primarily exhibiting contemporary ceramics; sculptural, functional, and installation works; representing 3 clay artists.

Rena Bransten Gallery

San Francisco, CA; www.renabranstengallery.com
Primarily exhibiting contemporary ceramics; installation, figurative, and sculptural works; representing 4 clay artists.

Ruby's Clay Studio and Gallery

San Francisco, CA; www.rubysclaystudio.org
Primarily exhibiting contemporary ceramics; functional and sculptural works; representing 50 clay artists.

Legion of Honor, Fine Arts Museums of San Francisco

San Francisco, CA; www.famsf.org
Primarily exhibiting historical ceramics with a focus on European 18th-century ceramics; functional, sculptural, and figurative works; representing 15 clay artists.

SMAart Gallery & Studio

San Francisco, CA; www.smaartstudio.com
Primarily exhibiting contemporary ceramics; sculptural, figurative, functional, and installation works; representing 20+ clay artists.

LH Horton Jr Gallery, San Joaquin Delta College

Stockton, CA; gallery.deltacollege.edu
Primarily exhibiting contemporary ceramics; functional, sculptural, and figurative works; representing 200+ clay artists.

Trinidad Art Gallery

Trinidad, CA; www.trinidadartgallery.com
Primarily exhibiting contemporary ceramics; functional, sculptural, and figurative works; porcelain and stoneware; representing 4 clay artists.

L.A. Louver

Venice, CA; www.lalouver.com
Primarily exhibiting contemporary ceramics; sculptural works; representing 5 clay artists.

Colorado

Arvada Ceramic Arts Guild and Gallery

Arvada, CO; www.arvadaceramicarts.org
Primarily exhibiting contemporary ceramics; functional and sculptural works; representing 20 clay artists.

The Arvada Center for the Arts & Humanities

Arvada, CO; www.arvadacenter.org
Primarily exhibiting historical and contemporary ceramics.

Harvey Preston Gallery

Aspen, CO; www.harveypreston.com
Primarily exhibiting contemporary ceramics; functional, sculptural, and figurative works; representing 20+ clay artists.

Carbondale Clay Center

Carbondale, CO; www.carbondaleclay.org
Primarily exhibiting contemporary ceramics; functional and sculptural works; representing 35 clay artists.

Turquoise Raven Art Gallery

Cortez, CO; www.turquoisravenartgallery.com
Primarily exhibiting functional and sculptural works; representing 1 clay artist.

Art Students League of Denver

Denver, CO; www.asld.org
Primarily exhibiting contemporary ceramics; functional and sculptural works; representing approximately 40 clay artists.

Artists on Santa Fe Gallery & Studios

Denver, CO; www.artistsonsantafe.com
Primarily exhibiting contemporary ceramics; functional, sculptural, and figurative works; representing 6 clay artists.

Denver Art Museum

Denver, CO; www.denverartmuseum.org
Primarily exhibiting historical ceramics; Ancient American, Native American, Asian, and contemporary ceramics.

Colorado (continued)

Plinth Gallery

Denver, CO; www.plinthgallery.com

Primarily exhibiting contemporary ceramics; functional and sculptural works.

The Art Center of Western Colorado

Grand Junction, CO; www.gjartcenter.org

Representing 40–100 clay artists.

Foothills Art Center

Golden, CO; www.foothillsartcenter.org

Primarily exhibiting contemporary ceramics; fine-craft media such as glass, clay, textiles, etc.; representing 30 clay artists.

Commonwheel Artists Co-op

Manitou Springs, CO; www.commonwheel.com

Primarily exhibiting contemporary ceramics; functional works; Colorado artists, mainly Front Range/Southern Colorado; representing 10 clay artists.

Anderson Ranch Arts Center

Snowmass Village, CO; www.andersonranch.org

Primarily exhibiting functional, sculptural, and non-functional works.

Connecticut

Spectrum Art Gallery and Artisan Store

Centerbrook, CT; www.spectrumartgallery.org

Primarily exhibiting contemporary ceramics; functional, sculptural, and figurative works; representing 29 clay artists.

Greenleaf Pottery

East Hampton, CT; www.greenleafstoneware.com

Primarily exhibiting contemporary ceramics; functional works; stoneware pottery; representing 1 clay artist.

Mill Gallery, Guilford Art Center

Guilford, CT; www.guilfordartcenter.org

Primarily exhibiting contemporary ceramics; sculptural, functional, figurative, and installation works; contemporary American craft.

Wesleyan Potters Gallery Shop

Middletown, CT; www.wesleyanpotters.com

Primarily exhibiting contemporary ceramics; functional and sculptural works; representing 50+ clay artists.

Sawmill Pottery

Putnam, CT; www.sawmillpottery.com

Primarily exhibiting contemporary local ceramics; functional and sculptural works; representing 10 clay artists.

District of Columbia

District Clay Gallery

Washington, DC; www.districtclaycenter.com/resident-artists.html

Primarily exhibiting contemporary ceramics; functional, sculptural, and figurative works; representing 20+ clay artists.

The National Museum of Asian Art | Smithsonian Institution

Washington, DC; www.asia.si.edu

Primarily exhibiting historical ceramics.

Hill Center at the Old Naval Hospital

Washington, DC; hillcenterdc.org

Primarily exhibiting contemporary ceramics; functional works.

National Gallery of Art

Washington, DC; www.nga.gov

Primarily exhibiting historical functional and figurative ceramics; some sculptural works; permanent display of French and Italian Renaissance ceramics and Chinese porcelains circa 1425–1750 CE.

Renwick Gallery of the Smithsonian American Art Museum

Washington, DC www.americanart.si.edu

Representing 331 clay artists.

Florida

St. Petersburg College

Clearwater, FL; www.spcollege.edu

Primarily exhibiting contemporary ceramics; sculptural, functional, figurative, and installation works; student exhibition space; representing 20+ student clay artists.

Museum of Art Deland

DeLand, FL; www.moartdeland.org

Primarily exhibiting contemporary ceramics; Florida ceramics.

Clay and Paper, Gallery of Art

Dunedin, FL; www.claypaper.com

Primarily exhibiting contemporary ceramics; functional and sculptural works; mainly pottery made in Florida; representing 15 clay artists.

Charlie Cummings Gallery

Gainesville, FL; www.charliecummingsgallery.com

Primarily exhibiting contemporary ceramics; functional, sculptural, and figurative works; representing 50+ clay artists.

Clay Habit Studio and Gallery

Jensen Beach, FL; www.clayhabitsupply.com

Primarily exhibiting contemporary ceramics; sculptural works; representing 2 clay artists.

Key West Pottery

Key West, FL; www.keywestpottery.com

Primarily exhibiting contemporary ceramics; functional and sculptural works.

Mindy Solomon Gallery

Miami, FL; www.mindsolomon.com

Primarily exhibiting contemporary ceramics; functional, sculptural, and figurative works; South Korean ceramics; representing 10 clay artists.

Naples Art Studios, North Line Plaza

Naples, FL; naplesart.studio

Primarily exhibiting contemporary ceramics; sculptural works.

Amelia Center Gallery, Gulf Coast State College

Panama City, FL; www.gulfcoast.edu/community-friends/arts-culture/amelia-center-gallery/index.html

Primarily exhibiting contemporary ceramics; functional, sculptural, and figurative works.

Craftsman House Gallery

St. Petersburg, FL; www.craftsmanhousegallery.com

Primarily exhibiting contemporary ceramics; functional and sculptural works.

Florida CraftArt Gallery

St. Petersburg, FL; www.floridacraftart.org

Primarily exhibiting contemporary ceramics; functional, sculptural, figurative, and installation works; Florida artists as well as artists from around the country; representing 75–100 clay artists.

Morean Center for Clay

St. Petersburg, FL; moreanartscenter.org/center-for-clay

Primarily exhibiting contemporary ceramics; sculptural, functional, figurative, and installation works; representing 20+ clay artists.

Lighthouse ArtCenter Museum

Tequesta, FL; www.lighthousearts.org

Primarily exhibiting contemporary ceramics; functional, sculptural, figurative works, atmospheric firing; local and regional emerging and established artists; representing 41 clay artists.

Armory Art Center

West Palm Beach, FL; www.armoryart.org

Primarily exhibiting contemporary ceramics; functional, sculptural, figurative, and installation works; representing 20+ clay artists.

Dixie Art Loft at The Craft Gallery

West Palm Beach, FL; www.thecraftgallery.net

Primarily exhibiting contemporary ceramics; sculptural works; representing 15 clay artists.

Georgia

MudFire Studio & Gallery

Decatur, GA; www.mudfire.com

Primarily exhibiting contemporary ceramics; functional works; contemporary studio pottery with special focus on illustration, color, design, and narrative; representing 50+ clay artists.

The Hudgens Center For Art

Duluth, GA; www.thehudgens.org

Primarily exhibiting contemporary ceramics; functional and sculptural works; representing 15 clay artists.

The Hambidge Center for Creative Arts & Sciences

Rabun Gap, GA; www.hambidge.org

Primarily exhibiting contemporary ceramics; functional and sculptural works.

Art Center West

Roswell, GA; www.roswellclaycollective.com

Primarily exhibiting contemporary ceramics; functional, sculptural, and figurative works.

Idaho

Stewart Gallery

Boise, ID; www.stewartgallery.com

Primarily exhibiting contemporary ceramics; sculptural works.

The Art Spirit Gallery

Coeur d'Alene, ID; www.theartspiritgallery.com

Primarily exhibiting contemporary ceramics; functional, sculptural, and figurative works.

Illinois

Lillstreet Gallery

Chicago, IL; www.lillstreetgallery.com

Primarily exhibiting contemporary ceramics; functional and sculptural works; representing 40+ clay artists.

The Neveca Project

Chicago, IL; www.thenevaproject.com

Primarily exhibiting contemporary ceramics; functional, sculptural, and figurative works; collectible ceramics from the US, Japan, and Britain; representing 25 clay artists.

Neil Estrick Gallery, LLC

Grayslake, IL; www.neilestrickgallery.com

Primarily exhibiting contemporary ceramics; functional works.

ClaySpace Ceramic Arts Center

Lisle, IL; www.clayspace.net

Primarily exhibiting contemporary ceramics; functional and sculptural works; representing 55 clay artists.

Terra Incognito Studios and Gallery

Oak Park, IL; www.terraincognitostudios.com

Primarily exhibiting contemporary ceramics; functional works; representing 20+ clay artists.

M.G. Nelson Family Gallery

Springfield, IL; www.springfieldart.org

Primarily exhibiting contemporary ceramics; functional, sculptural, figurative, and installation works; representing 10 clay artists.

The Macoupin Art Collective

Staunton, IL; www.macart.org

Primarily exhibiting contemporary ceramics; functional works; representing 11 clay artists.

Cinema Gallery

Urbana, IL; www.cinemapgallery.cc

Primarily exhibiting contemporary ceramics; functional works; Midwestern artists.

Continued on page 52.

CUP
{ XIX }

the Intimate Object



an international exhibition featuring

OVER 1000 CUPS BY MORE THAN 200 ARTISTS FROM 8 COUNTRIES

October 6TH – November 2ND

Opens online 12.00PM (EASTERN) on Friday, October 6TH

charliecummingsGALLERY.com

2040 NW 6TH STREET . GAINESVILLE, FL . 32609 . 352-514-8821

 Charlie Cummings Gallery

 @CharlieCummingsGallery

 @CharlieCGallery

Indiana

Cambridge City Public Library

Cambridge City, IN; ccitypl.org/overbeck-museum
Representing 6 clay artists.

Mary Anderson Center for the Arts

Mount St. Francis, IN; www.mountsaintfrancis.org/artists-retreat
Primarily exhibiting contemporary ceramics; functional works; representing 1 clay artist.

USI New Harmony Gallery of Contemporary Art

New Harmony, IN; www.usi.edu/nhgallery
Representing 30–60 clay artists.

Highland Studio and Gallery

South Bend, IN; www.highlandstudioandgallery.com
Primarily exhibiting contemporary ceramics; representing 14 clay artists.

Iowa

Gilded Pear Gallery

Cedar Rapids, IA; www.gildedpeargallery.com
Primarily exhibiting contemporary ceramics; functional, sculptural, and figurative works; representing 7 clay artists.

Iowa Ceramics Center and Glass Studio

Cedar Rapids, IA; www.iowaceramicscenter.org
Representing 8 clay artists.

Luther College Fine Arts Collection

Decorah, IA; www.luther.edu/fine-arts
Primarily exhibiting historical ceramics.

ClayAKAR

Iowa City, IA; www.clayakar.com
Primarily exhibiting contemporary ceramics; functional works; representing 40+ artists, with 200+ through group shows; 300+ ceramic artists yearly.

Iowa Artisans Gallery

Iowa City, IA; www.iowaartisansgallery.com
Primarily exhibiting contemporary ceramics; functional works; permanent collection of contemporary American craft; representing 45 clay artists.

University of Iowa Stanley Museum of Art

Iowa City, IA; stanleymuseum.uiowa.edu
Primarily exhibiting historical and contemporary ceramics; functional, sculptural, and figurative works; contemporary American and European ceramics; representing 20+ clay artists.

Le Mars Arts Center

Le Mars, IA; www.lemarsarts.com
Primarily exhibiting contemporary ceramics; regional artists; representing 1–10 ceramic artists.

Kansas

Lawrence Arts Center

Lawrence, KS; www.lawrenceartscenter.org
Primarily exhibiting contemporary ceramics; functional, sculptural, and figurative works

SNW Gallery and Custom Frames

Manhattan, KS; www.snwgallery.com
Primarily exhibiting contemporary and historical ceramics; functional and figurative works; artists from Kansas and surrounding states; representing 15 clay artists.

Alice C. Sabatini Gallery

Topeka, KS; www.tscpl.org/gallery
Primarily exhibiting contemporary ceramics; functional and sculptural works; representing 20+ clay artists.

Mulvane Art Museum

Topeka, KS; www.mulvaneartmuseum.org
Primarily exhibiting contemporary sculptural and figurative ceramics; a modest collection of historical works; representing 15–20 clay artists.

Wichita Pottery

Wichita, KS; www.wichitapottery.com
Primarily exhibiting contemporary ceramics; functional, sculptural, and figurative works; US artists; representing 4 clay artists.

Kentucky

Kentucky Artisan Center at Berea

Berea, KY; www.kentuckyartisancenter.ky.gov
Primarily exhibiting contemporary ceramics; functional, sculptural, and figurative works; representing 85 clay artists.

AA Clay Studio and Gallery

Louisville, KY; www.alexadamscaywork.com
Primarily exhibiting contemporary regional ceramics; functional and sculptural works; representing 12 clay artists.

Asia Institute/Crane House

Louisville, KY; crane-house.org
Primarily exhibiting contemporary ceramics; sculptural, figurative, and installation works; representing 7 clay artists.

Kentucky Museum of Art and Craft

Louisville, KY; www.kmacmuseum.org
Primarily exhibiting contemporary ceramics; representing 20 clay artists.

Louisiana

Jonathan Ferrara Gallery

New Orleans, LA 70130; jonathanferraragallery.com
Representing 6 clay artists.

Sans Souci Fine Crafts Gallery, Louisiana Crafts Guild

Lafayette, LA; www.louisianacrafts.org
Primarily exhibiting contemporary and historical ceramics; representing 15–20 clay artists.

Carol Robinson Gallery

New Orleans, LA; www.carolrobinsongallery.net
Primarily exhibiting contemporary figurative and functional ceramics.

New Orleans Museum of Art

New Orleans, LA; www.noma.org
Primarily exhibiting contemporary and historical ceramics; sculptural, functional, and figurative works; permanent collection, Meissen porcelain, French ceramics (1600–1950), American Art pottery (1880–1960), Japanese and Chinese ceramics (3000 BCE–1900 CE); more than 40 clay artists/manufacturers currently on view.

Newcomb Art Museum at Tulane University, Woldenberg Art Center

New Orleans, LA; newcombartmuseum.tulane.edu
Primarily exhibiting rotating contemporary exhibitions with permanent display of Newcomb Pottery ceramics; functional works.

Clay Center of New Orleans

New Orleans, LA; www.nolaclay.org
Primarily exhibiting contemporary figurative and functional ceramics; representing 200+ clay artists.

Ogden Museum of Southern Art

New Orleans, LA; www.ogdenmuseum.org
Primarily exhibiting sculptural and functional ceramics; art of the American South; representing 10 clay artists.

Maine

Dowstudio Gallery

Deer Isle, ME; www.dowstudiodeerisle.com
Primarily exhibiting contemporary ceramics; functional and sculptural works; established and emerging studio potters and artists from across the US; representing 35 clay artists.

Maine Potters Market

Portland, ME; www.maine-pottersmarket.com
Primarily exhibiting contemporary ceramics; functional works; representing 14 clay artists.

Richard Boyd Art Gallery

Portland, ME; www.richardboydpottery.com
Primarily exhibiting contemporary ceramics; functional works.

Maryland

Baltimore Clayworks

Baltimore, MD; www.baltimoreclayworks.org
Primarily exhibiting contemporary ceramics; functional, figurative, and sculptural works, including installations; representing 20+ clay artists.

Waverly Street Gallery

Bethesda, MD; www.waverlystreetgallery.com
Primarily exhibiting contemporary ceramics; functional and sculptural works; representing 3 clay artists.

The ClayGround Studio & Gallery

Ellicott City, MD; www.claygroundonline.com
Representing 15 clay artists.

Hodson and Whitaker Galleries

Frederick, MD; www.hood.edu/academics/departments/departments-art-archaeology/art-galleries
Primarily exhibiting contemporary ceramics; functional, sculptural, figurative, and installation works; representing 20 clay artists.

The Potters Guild of Baltimore

Hampden, MD; www.pottersguild.org
Primarily exhibiting contemporary ceramics; functional, sculptural, and figurative works; representing 20+ clay artists.

Massachusetts

Gallery 224

Allston, MA; ofa.fas.harvard.edu/ceramics
Primarily exhibiting contemporary ceramics; functional, sculptural, figurative, and installation works; emerging and established artists; representing 20+ clay artists.

Ellen Miller Gallery

Boston, MA; www.ellenmillergallery.com
Primarily exhibiting contemporary ceramics; sculptural, figurative, and installation works; representing 3 clay artists.

LaiSun Keane Gallery

Boston, MA; www.laisunkeane.com
Primarily exhibiting contemporary sculptural and functional ceramics.

Museum of Fine Arts

Boston, MA; www.mfa.org
Primarily exhibiting historical and contemporary ceramics; functional, sculptural, figurative, and installation works; representing 20+ clay artists.

Pucker Gallery

Boston, MA; www.puckergallery.com
Primarily exhibiting contemporary ceramics; functional and sculptural works; representing Brother Thomas Bezanson, Fance Franck, Yoshinori Hagiwara, Shinsaku Hamada, Shoji Hamada, Tomoo Hamada, Li Hongwei, Randy Johnston, Hisaaki Kamei, Miraku Kamei XV, Jan Kollwitz, Ipek Kotan, Young Jae Lee, Ken Matsuzaki, Hideaki Miyamura, Tatsuzo Shimaoka, Onda Yaki, Makoto Yabe, Zulu and Lozi artists.

Society of Arts and Crafts

Boston, MA; www.craftboston.org
Primarily exhibiting contemporary ceramics; functional, sculptural, and figurative works; American contemporary craft; representing 20+ clay artists.

Fuller Craft Museum

Brockton, MA; www.fullercraft.org
Primarily exhibiting contemporary and craft ceramics; sculptural, functional, figurative, or installation works from 1950 to the present; representing 200+ clay artists in the permanent collection, approximately 20 in annual exhibitions.

Mobilia Gallery

Cambridge, MA; www.mobilia-gallery.com
Primarily exhibiting contemporary ceramics; sculptural and installation works; representing 8 clay artists.

Continued on page 56.

Pottery on the Hill

November 17-19, 2023

Ticketed Preview Reception:
Friday, Nov. 17, 2023

Free Show & Sale:
Saturday-Sunday, Nov. 18-19, 2023

Special Features:
Raku Firing & Potter Demonstrations

Reserve your tickets at PotteryontheHillDC.org



ANDREA DENNISTON



CATHERINE WHITE



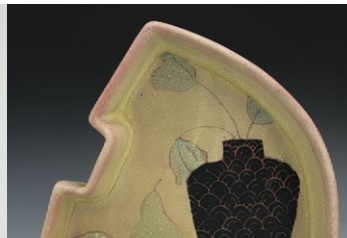
CHRISTINA BENDO



DAN FINNEGAN



MICHAEL KLINE



DONNA POLSENO



DOUG PELTZMAN



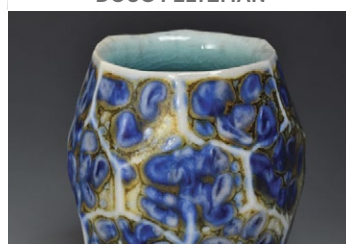
RICHARD HENSLEY



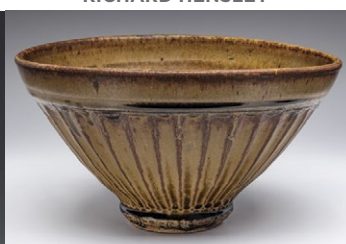
JUNKO YOUNG



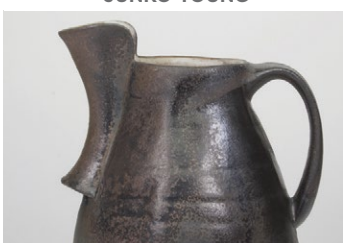
DANIELLE CARELOCK



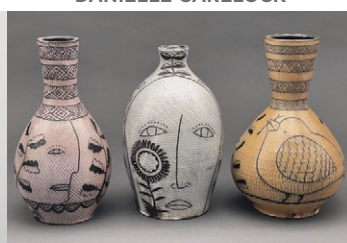
MARK SHAPIRO



GUILLERMO CUÉLLAR



MATT KELLEHER



MATTHEW METZ



SAM TAYLOR



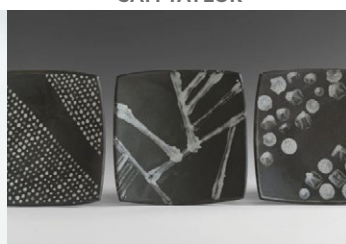
SETH GUZOVSKY



STACY SNYDER



SHOKO TERUYAMA



WARREN FREDERICK



DAVID YOUNG



Visit Pottery on the Hill and these other world-renowned museums featuring ceramics collections: National Museum of African Art, National Museum of American History, Natural History Museum, Freer | Sackler.



HILL CENTER
at the OLD NAVAL HOSPITAL
921 Pennsylvania Avenue SE
Washington, DC 20003
PotteryontheHillDC.org



Magdalene

ODUNDO

A Dialogue
with Objects

October 19, 2023
– April 21, 2024

Presenting Sponsors

Mary Janigan & Tom Kierans
The Reitberger Family in honour
of Renate Reitberger
Noreen Taylor & David Staines

Exhibition Supporters

David Binet
The Linda Frum & Howard
Sokolowski Charitable Foundation



Government Support



This exhibition includes objects generously
provided by the Royal Ontario Museum



**Gardiner
Museum**

Organized by the Gardiner Museum
111 Queen's Park, Toronto

Magdalene Odundo, Untitled, 1995, Ceramic,
Maxine and Stuart Frankel Foundation for Art,
Bloomfield Hills, MI. Photo: PD Rearick

49th annual POTTERY SHOW & SALE

Please refer to oldchurchpotteryshow.org for the most up-to-date information.



Bradley Klem

Curated by Chris Gustin, Bruce Dehnert, & Aysha Peltz

Featuring thousands of handmade, one-of-a-kind pieces by 28 distinguished potters

Ben Bates · IL
Margaret Bohls · NE
Paul Briggs · MA
Bruce Dehnert · NY
Andrea Denniston · VA
Susan Dewsnap · ME
Justin Donofrio · CO

Chris Gustin · MA
Nicholas Joerling · NC
Yeonsoo Kim · TX
Bradley Klem · CO
Simon Levin · IL
Robbie Lobell · WA
David MacDonald · NY

Candice Methe · NM
Matthew Metz · NY
Lindsay Oesterritter · VA
Ben Owen III · NC
Aysha Peltz · VT
Brenda Quinn · NY
Mark Shapiro · MA

Taylor Sijan · NJ
Malcolm Mobutu Smith · IN
Chad Steve · FL
Jack Troy · PA
Jerilyn Virden · VT
Mallory Wetherell · NE
Minsoo Yuh · GA

December 1-3, 2023
Friday, 6:00 PM - 9:00 PM
Saturday, 10:00 AM - 5:00 PM
Sunday, 11:00 AM - 4:00 PM

oldchurchpotteryshow.org
[@oldchurchpotteryshow](https://twitter.com/oldchurchpotteryshow)
[#theroadtodemarest](https://www.instagram.com/theroadtodemarest)



561 Piermont Road, Demarest, NJ 07627 · 201-767-7160
Proceeds benefit The Art School at Old Church, a 501(c)3 non-profit center for the arts.

Massachusetts (continued)

Mudflat Gallery

Cambridge, MA; www.mudflat.org
Primarily exhibiting contemporary ceramics; functional and sculptural works; representing 45 clay artists.

Lucy Lacoste Gallery

Concord, MA; www.lucylacoste.com
Primarily exhibiting contemporary ceramics; sculptural, functional, and figurative works; representing 20+ clay artists.

Ferrin Contemporary

North Adams, MA; ferrincontemporary.com
Primarily exhibiting historical and contemporary ceramics; sculptural, figurative, and installation works; ceramic art circa 1950–present; representing 15 clay artists.

Pinch

Northampton, MA; www.pinchgoods.com
Primarily exhibiting contemporary ceramics; functional works; representing 30 clay artists.

Mudflat Pottery School and Studios

Somerville, MA; www.mudflat.org
Primarily exhibiting contemporary ceramics; functional and sculptural works; representing 45 clay artists.

Kulina Folk Art & Pied Potter Hamelin Redware Pottery

Warren, MA; www.americanredware.com
Representing 2 clay artists.

Clever Hand Gallery

Wellesley, MA; www.cleverhandgallery.com
Primarily exhibiting contemporary ceramics; functional works; representing 6 clay artists.

The Krikorian Gallery & Gallery Store

Worcester, MA; www.worcestercraftcenter.org
Primarily exhibiting contemporary ceramics; functional work, figurative work, installation, and sculpture; almost all gallery shows and the work shown in the gallery are American artists; representing 100 clay artists.

Michigan

International Museum of Dinnerware Design

Ann Arbor, MI; www.dinnerwaremuseum.org
Primarily exhibiting historical and contemporary ceramics; collection features mostly functional work; some fine art including sculpture, photography, etc. that references dining and dinnerware.

Yourist Studio and Gallery

Ann Arbor, MI; www.youristpottery.com
Primarily exhibiting contemporary ceramics; functional and sculptural works; representing 20+ clay artists.

Schaller Gallery

Baroda, MI; www.schallergallery.com
Primarily exhibiting contemporary ceramics; functional works; representing 100+ clay artists.

Cranbrook Art Museum

Bloomfield Hills, MI; www.cranbrookartmuseum.org
Primarily exhibiting contemporary ceramics.

Pewabic Pottery

Detroit, MI; www.pewabic.org
Primarily exhibiting historical and contemporary Pewabic pots; exhibitions change on a regular basis and include mostly sculptural and functional art, with occasional installation pieces; representing 200+ clay artists.

Khnemu Studio on Fernwood Farm

Fennville, MI; www.khneumstudio.com
Primarily exhibiting contemporary ceramics; functional, sculptural, and figurative works; representing 20+ clay artists.

Buckham Gallery

Flint, MI; www.buckhamgallery.org
Primarily exhibiting contemporary ceramics; sculptural and functional works; representing 5 clay artists.

Minnesota

Tweed Museum of Art

Duluth, MN; sfa.d.umn.edu/tweed
Primarily exhibiting historical and contemporary ceramics; sculptural, functional, and figurative works; studio ceramics from around the world.

Fired Up Studios

Golden Valley, MN; www.firedupstudios.com
Primarily exhibiting contemporary ceramics; functional works; representing 40 clay artists.

Clay Coyote Pottery & Gallery

Hutchinson, MN; www.claycoyote.com
Primarily exhibiting contemporary ceramics; functional works; on-site emerging artist pottery studio focuses on cone-10 reduction stoneware; representing 25 clay artists.



Vase with Kingfisher and Lotus, enamel on porcelain, circa 1700, China, Qing dynasty, Kangxi reign. *Taft Museum of Art, bequest of Charles Phelps Taft and Anna Sinton Taft.* This piece is a part of the Taft Museum of Art's permanent collection (www.taftmuseum.org).

Clay Squared to Infinity

Minneapolis, MN; www.claysquared.com
Primarily exhibiting contemporary ceramics; functional and sculptural works; representing 20+ clay artists.

Northern Clay Center

Minneapolis, MN; www.northernclaycenter.org
Primarily exhibiting historical and contemporary ceramics; functional, sculptural, figurative, and installation works; representing 100 clay artists.

Perlman Teaching Museum

Northfield, MN; apps.carleton.edu/museum
Primarily exhibiting contemporary and historical ceramics; functional and sculptural works; mixed collection with some ceramics, varied exhibition program; representing 1 clay artist.

Rochester Art Center

Rochester, MN; www.rochesterartcenter.org
Primarily exhibiting contemporary ceramics; multi-media exhibitions.

The Grand Hand Gallery

St. Paul, MN; www.thegrandhand.com
Primarily exhibiting contemporary ceramics; functional works; Asian-influenced, American-made ceramics; representing 20 clay artists.

Mississippi

Ohr-O'Keefe Museum of Art

Biloxi, MS; www.georgeohr.org
Primarily exhibiting historical and contemporary ceramics.

Conner Burns Studio and Gallery

Natchez, MS; www.connerburns.com
Primarily exhibiting contemporary ceramics; functional, sculptural, figurative, and installation works; North American ceramics; representing 2 clay artists.

Missouri

Belger Arts Center

Kansas City, MO; www.belgerarts.org
Primarily exhibiting contemporary ceramics; works from the Belger Collection by established and emerging contemporary artists working in all mediums.

Belger Crane Yard Gallery

Kansas City, MO; www.belgerarts.org
Primarily exhibiting contemporary ceramics; three-dimensional works by established and emerging contemporary artists in a variety of mediums with a focus on ceramics and glass.

Centered Earth Gallery @ KC Clay Guild

Kansas City, MO; www.kcclayguild.org/gallery
Primarily exhibiting contemporary ceramics; functional, sculptural, and figurative works; representing 15 clay artists.

Sherry Leedy Contemporary Art

Kansas City, MO; www.sherryleedy.com
Primarily exhibiting contemporary American ceramics; sculptural works; representing 15 clay artists.

Daum Museum of Contemporary Art

Sedalia, MO; www.daummuseum.org
Primarily exhibiting contemporary ceramics.

Craft Alliance Center of Art + Design

St. Louis, MO; www.craftalliance.org
Primarily exhibiting contemporary ceramics; sculptural, functional, figurative, and some installation works; representing 40 clay artists.

Duane Reed Gallery

St. Louis, MO; www.duanereedgallery.com
Primarily exhibiting contemporary ceramics; sculptural works; focus on technical proficiency and biomorphic or organic abstract forms; representing 20+ clay artists.

Montana

Archie Bray Foundation for the Ceramic Arts

Helena, MT; www.archiebray.org
Primarily exhibiting historical and contemporary ceramics; functional, sculptural, figurative, and installation works; representing 20+ clay artists.

Holter Museum of Art

Helena, MT; www.holtermuseum.org
Primarily exhibiting contemporary ceramics; representing 20 clay artists.

The Clay Studio of Missoula

Missoula, MT; www.theclaystudioofmissoula.org
Primarily exhibiting contemporary ceramics; functional, sculptural, and figurative works; representing 30 clay artists.

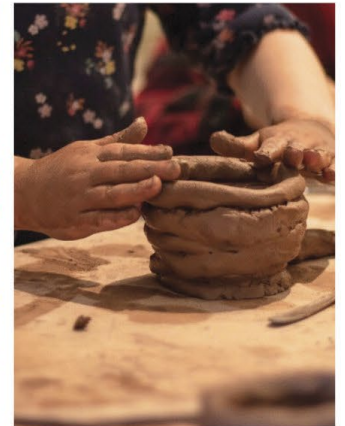
Red Lodge Clay Center

Red Lodge, MT; www.redlodgeclaycenter.com
Primarily exhibiting contemporary ceramics; functional and sculptural works; representing 120 clay artists.

Whitefish Pottery and Stillwater Gallery

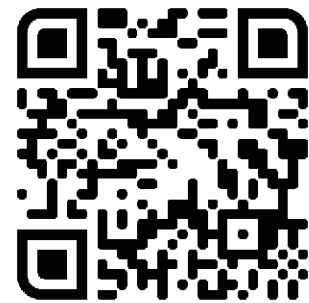
Whitefish, MT; www.whitefishpottery.com
Primarily exhibiting contemporary ceramics; functional and sculptural works; contemporary Montana-based artists; representing 30+ clay artists.

Continued on page 58.




CARBONDALE CLAY CENTER

ENRICHING LIVES THROUGH THE CERAMIC ARTS



- ADULT CLASSES
- KIDS CLASSES
- WORKSHOPS
- OUTREACH
- RETAIL SHOP
- GALLERY & STUDIO
- ARTIST RESIDENCY



Visit us online for all CCC happenings, or browse  handmade ceramic goods in the shop! Join our newsletter to stay up to date with the latest events, workshops, classes and more.

www.carbondaleclay.org
 970.963.2529
 info@carbondaleclay.org
 135 Main St. Carbondale, CO

Nebraska

Cooper Studio & Gallery

Ashland, NE; www.facebook.com/Cooper-Studio-Gallery-714582738687819

Primarily exhibiting contemporary ceramics; functional and sculptural works; representing 3 clay artists.

LUX Center for the Arts

Lincoln, NE; www.luxcenter.org

Primarily exhibiting contemporary ceramics; functional works; representing 50+ clay artists.

Nevada

Oats Park Art Center

Fallon, NV; www.churchillarts.org

Primarily exhibiting contemporary ceramics.

Clay Arts Vegas

Las Vegas, NV; www.clayartsvegas.com

Primarily exhibiting contemporary ceramics; functional, sculptural, figurative, and installation works; representing 12 clay artists.

New Jersey

Romano Gallery at Blair Academy

Blairstown, NJ; blair.edu/the-arts/romano-gallery
Primarily exhibiting contemporary ceramics.

Mikhail Zakin Gallery at The Art School at Old Church

Demarest, NJ; www.tasoc.org

Primarily exhibiting contemporary ceramics; functional and sculptural works; representing 40+ clay artists.

m.t. burton gallery

Surf City, NJ; www.mtburtongallery.com

Primarily exhibiting contemporary ceramics; functional, sculptural, figurative, and installation works; representing 20+ clay artists.

Trenton City Museum

Trenton, NJ; www.ellarslie.org

Primarily exhibiting historical and contemporary ceramics; functional and figurative works; ceramics by pottery companies such as Trenton Belleek, Lenox, Boehm, Maddock, Mercer, Ott and Brewer, Willets, Scammell, and Stangl.

New Mexico

Rift Gallery

Dixon, NM; www.riftgallery.com

Primarily exhibiting contemporary ceramics; functional, sculptural, figurative, and installation works.

Bellas Artes

Santa Fe, NM; www.bellasartessgallery.com

Primarily exhibiting contemporary ceramics.

Blue Rain Gallery

Santa Fe, NM; www.blueraingallery.com

Primarily exhibiting contemporary ceramics; sculptural and figurative works; Native American art and contemporary non-Native Southwest art.

King Galleries Santa Fe

Santa Fe, NM; www.kinggalleries.com

Representing 10 clay artists.

Patina Gallery

Santa Fe, NM; www.patina-gallery.com

Primarily exhibiting contemporary ceramics; sculptural vessels; representing 3 clay artists.

Firebox Studios

Santa Fe, NM; www.fireboxstudios.co

Primarily exhibiting contemporary ceramics.

New York

Alfred Ceramic Art Museum at Alfred University

Alfred, NY; ceramicsmuseum.alfred.edu

Primarily exhibiting contemporary and historical ceramics.

Hudson Beach Glass

Beacon, NY; www.hudsonbeachglass.com

Primarily exhibiting contemporary ceramics; sculptural and figurative, some functional works.

Gandee Gallery

Fabius, NY; www.gandeegallery.com

Primarily exhibiting contemporary ceramics; functional and sculptural works; representing 25–30 clay artists.

Sculpture Space NYC

Long Island City, NY; www.sculpturespacenyc.com

Primarily exhibiting contemporary ceramics; sculptural and functional works.

Barry Friedman Ltd.

New York, NY; www.barryfriedmanltd.com

Primarily exhibiting contemporary ceramics; functional, sculptural, and figurative works.

Claire Oliver Gallery

New York, NY; www.claireoliver.com

Primarily exhibiting contemporary ceramics; sculptural works; representing 1 clay artist.

Cocobolo Gallery

New York, NY; www.cocobolodesign.com

Primarily exhibiting contemporary American ceramics; sculptural, functional, decorative, and architectural works; representing 9 clay artists.

Dai Ichi Arts, Ltd.

New York, NY; www.daiichiarts.com

Primarily exhibiting contemporary ceramics; Japanese and Chinese ceramics from the 20th and 21st centuries.

Ippodo Gallery New York

New York, NY; www.ippodogallery.com

Primarily exhibiting contemporary ceramics.

Jane Hartsook Gallery at Greenwich House Pottery

New York, NY; www.greenwichhouse.org

Primarily exhibiting contemporary ceramics; functional, sculptural, figurative, and installation works.

Joan B. Mirviss Ltd.

New York, NY; www.mirviss.com

Primarily exhibiting historical and contemporary ceramics; functional and sculptural works; multimedia works and modern and contemporary ceramics; representing 20+ clay artists.

Mugi Studio

New York, NY; www.mugipottery.com

Primarily exhibiting contemporary ceramics; functional works; representing 15 clay artists.

Nancy Margolis Gallery

New York, NY; www.nancymargolisgallery.com

Primarily exhibiting contemporary ceramics; American, Asian, and European artists.

Sara Japanese Pottery

New York, NY; www.saranyc.com

Primarily exhibiting contemporary ceramics from Japan. Representing 25 clay artists.

Stone Sparrow NYC

New York, NY; www.stonesparrownyc.com

Primarily exhibiting contemporary ceramics.

Hudson Valley Center for Contemporary Art

Peekskill, NY; www.hudsonvalleymoca.org

Primarily exhibiting contemporary ceramics; installation works; representing 4 clay artists.

The shop and gallery at Clay Art Center (CAC)

Port Chester, NY; www.clayartcenter.org

Primarily exhibiting contemporary ceramics; functional, sculptural, figurative, and installation works; one-of-a-kind functional and decorative ceramics by CAC artists and guest artists; representing 68 clay artists.

Flower City Arts Center

Rochester, NY; www.flowercityarts.org

Primarily exhibiting contemporary ceramics; functional, sculptural, and figurative works; representing 25–30 clay artists.

Saratoga Clay Arts Center

Schuylerville, NY; www.saratogaclayarts.org

Representing 50+ clay artists.

Everson Museum of Art

Syracuse, NY; www.everson.org

Primarily exhibiting contemporary functional and sculptural works; representing 1500 clay artists.



Linda Ge's *Bones and Sinew Ramen Bowl #4*, 11 in. (28 cm) in width, porcelain stoneware, luster, 2021. This piece was on view at Gilded Pear Gallery (www.gildedpeargallery.com) in Cedar Rapids, Iowa, November 13, 2022–January 27, 2023.

Continued on page 62.

ONENESS: Brie Ruais

2.2.24 - 5.4.24



 contemporary
craft Where art comes to life

contemporarycraft.org | 5645 Butler St., Pittsburgh, PA 15201 | 412.261.7003

Image courtesy Brie Ruais and Albertz Benda, New York | Los Angeles

The
Clay
Studio



Between Horizons

경계를 넘어서

Korean Ceramic
Artists in America

October 12–December 31

Opening Reception: October 14, 2–4pm

Symposium: December 2, 10am–4pm

Between Horizons explores the human instinct to travel and pursue new ideas through the artwork of twelve artists who began their ceramic education in Korea before moving to the US for graduate work. Their ceramic sculptures embody the shifting personal narratives generated by the brave decision to move to a new country in search of new perspectives.

Artists: Sukjin Choi, Soojin Choi, Ahrong Kim, Joon Hee Kim, Minah Kim, Yeonsoo Kim, Gunyoung Kim, Kyungmin Park, Jae Won Lee, Yehrim Lee, Sunkoo Yuh, and Jinsik Yoo

Curators: Mi-Kyoung Lee & Jennifer Zwilling

NATIONAL
ENDOWMENT for the ARTS
arts.gov

E. Rhodes and Leona B. Carpenter Foundation

The Clay Studio

1425 N American Street
Philadelphia, PA 19122

THECLAYSTUDIO.ORG

INSTAGRAM: @theclaystudiophl
FACEBOOK: theclaystudio.phl

RED LODGE CLAY CENTER

RESIDENCIES - GALLERY - WORKSHOPS - EDUCATION - COMMUNITY



SUPPORTING ARTISTS, THE CREATIVE PROCESS
AND THE IMPORTANCE OF ART IN EVERYDAY LIFE SINCE 2006

WWW.REDLODGECLAYCENTER.COM

New York *(continued)***Rockland Center for the Arts**

West Nyack, NY; www.rocklandartcenter.org
Representing 63 clay artists.

Portage Hill Art Gallery

Westfield, NY; www.portagehillgallery.com
Primarily exhibiting contemporary ceramics; functional, sculptural, and figurative works; representing 2 clay artists.

North Carolina

Blue Spiral 1 Gallery

Asheville, NC; www.bluespiral1.com
Primarily exhibiting contemporary ceramics; functional, sculptural, figurative, and installation works; representing 30 clay artists.

Odyssey Gallery of Ceramic Arts

Asheville, NC; www.odysseycoopgallery.com
Primarily exhibiting functional, sculptural, figurative work by a collective of 23 ceramic artists.

Odyssey Clayworks

Asheville, NC; www.odysseyclayworks.com
Primarily exhibiting contemporary ceramics; functional, sculptural, figurative, and installation works; representing 15 clay artists.

In Tandem Gallery

Bakersville, NC; www.intandemgallery.com
Representing 120 clay artists.

FRANK Gallery

Carrboro, NC; www.frankisart.com
Primarily exhibiting contemporary ceramics; functional, sculptural, and figurative works; artists from the North Carolina Triangle region; representing 20 clay artists.

Lark & Key Gallery

Charlotte, NC; www.larkandkey.com
Primarily exhibiting contemporary ceramics; functional and sculptural works; featuring local and regional North Carolina potters; representing 15 clay artists.

Mint Museum of Art

Charlotte, NC; www.mintmuseum.org
Primarily exhibiting historical and contemporary ceramics; functional, sculptural, figurative, and installation works; historical decorative arts; contemporary craft and design; North Carolina pottery; representing 20+ clay artists.

Pocosin Arts School of Fine Craft

Columbia, NC; www.pocosinarts.org
Primarily exhibiting contemporary ceramics; functional and sculptural works; representing 50 clay artists.

Cedar Creek Gallery

Creedmoor, NC; www.cedarcreekgallery.com
Primarily exhibiting contemporary and historical ceramics; functional, sculptural, and figurative works; ceramics made by on-site potters, local, North Carolina, and national craftspeople; representing 250 clay artists.

Claymakers

Durham, NC; www.claymakers.org
Primarily exhibiting contemporary ceramics; functional and sculptural works; representing 65+ clay artists.

The Bascom, A Center for the Visual Arts

Highlands, NC; www.thebascom.org
Representing 50 clay artists.

Hillsborough Arts Council Gallery and Gift Shop

Hillsborough, NC; hillsboroughartscouncil.org/giftshop
Primarily exhibiting contemporary ceramics; functional works and clay jewelry; range of styles in porcelain and stoneware; representing 8 clay artists.

Gregg Museum of Art and Design

Raleigh, NC; gregg.arts.ncsu.edu
Primarily exhibiting contemporary and historical ceramics; functional works; North Carolina and regional ceramics; representing 150+ clay artists.

North Carolina Pottery Center

Seagrove, NC; www.ncpotterycenter.org
Primarily exhibiting contemporary and historical ceramics; North Carolina and Native American pottery; representing 50 clay artists.

Toe River Arts

Spruce Pine, NC; www.toeriverarts.org
Primarily exhibiting contemporary ceramics; functional, sculptural, and figurative works; representing 20+ clay artists.

Piedmont Craftsmen

Winston-Salem, NC; www.piedmontcraftsmen.org
Primarily exhibiting contemporary ceramics.

Ohio

The Dairy Barn Arts Center

Athens, OH; www.dairybarn.org
Primarily exhibiting contemporary ceramics; representing 20+ clay artists.

Baldwin Wallace University's Fawick Art Gallery

Berea, OH; www.fawickgallery.com
Primarily exhibiting contemporary ceramics.

Canton Museum of Art

Canton, OH; www.cantonart.org
Primarily exhibiting contemporary ceramics; American functional and sculptural works; permanent collection of 150 clay artists.

Cincinnati Art Museum

Cincinnati, OH; www.cincinnatiartmuseum.org
Primarily exhibiting historical and contemporary ceramics; functional works.

(Not) Sheep Gallery

Columbus, OH; www.notsheepgallery.com
Primarily exhibiting contemporary ceramics; sculptural and figurative works; representing 2 clay artists.

Ohio Craft Museum

Columbus, OH; www.ohiocraft.org
Primarily exhibiting contemporary and historical ceramics; sculptural, functional, figurative, and installation works.

Rosewood Gallery, Rosewood Arts Centre

Kettering, OH; www.playkettering.org/gallery
Primarily exhibiting contemporary ceramics and other media; 1–2 solo ceramic exhibitions including a yearly ceramic artist in residence, group exhibitions include 30 ceramic artists.

The Little Gallery at BGSU Firelands

Huron, OH; bgsu.edu/firelands/arts/the-little-gallery
Primarily exhibiting contemporary ceramics.

The Museum Of Ceramics

East Liverpool, OH; www.themuseumofceramics.com
Primarily exhibiting historical and contemporary ceramics; functional and figurative works.

Mason Gallery of Craft + Fine Art

Norwood, OH; www.masonhandmade.com
Primarily exhibiting contemporary ceramics; local makers, functional ceramics, emerging artists; representing 15–20 clay artists at any given time.

Queen City Clay

Norwood, OH; www.queencityclay.com/retail/gallery
Primarily exhibiting contemporary ceramics; sculptural, functional, and atmospheric ceramics.

Cowan Pottery Museum at Rocky River Public Library

Rocky River, OH; www.rrpl.org
Primarily exhibiting historical ceramics; functional, sculptural, figurative, and installation works.

River Gallery

Rocky River, OH; www.rivergalleryarts.com
Primarily exhibiting contemporary ceramics; functional and sculptural works; featuring Ohio artists and artists with an Ohio connection; representing 20+ clay artists.

Frank Museum of Art/Miller Gallery/ Fisher Gallery

Westerville, OH; otterbein.edu/art/art-exhibit-schedule
Primarily exhibiting contemporary ceramics

Zanesville Museum of Art

Zanesville, OH; www.zanesvilleart.org
Primarily exhibiting historical and contemporary ceramics; functional, sculptural, and figurative works; Ohio pottery 1870s to the present and American studio pottery.

Oklahoma

National Cowboy & Western Heritage Museum

Oklahoma City, OK; www.nationalcowboymuseum.org
Representing 50 clay artists.

Oregon

White Bird Gallery

Cannon Beach, OR; www.whitebirdgallery.com
Primarily exhibiting contemporary ceramics; functional and sculptural works; figurative and narrative work, wall-relief sculpture; representing 15 clay artists.

Coos Art Museum

Coos Bay, OR; www.coosart.org
Primarily exhibiting sculptural and figurative ceramics; representing 20–30 clay artists.

Adams and Ollman

Portland, OR; www.adamsandollman.com
Primarily exhibiting historical and contemporary ceramics; sculptural and installation works; representing 2 clay artists.

Eutectic Gallery

Portland, OR; www.eutecticgallery.com
Primarily exhibiting contemporary ceramics; functional, sculptural, figurative, and installation works; showcasing emerging artists, innovative clay methods and contemporary works; representing 20+ clay artists.

Freed Gallery

Lincoln City, OR; www.freedgallery.com
Primarily exhibiting contemporary ceramics; sculptural, functional, and figurative works; representing 7 artists: Roger Allen, Phillip Charette, Katy McFadden, Andrea Peyton, Wally Schwab, Michael Schwartz, Dianne Story-Cunningham.

Guardino Gallery

Portland, OR; www.guardinogallery.com
Primarily exhibiting contemporary ceramics; sculptural works; Northwest artists; representing 15–20 clay artists.

Pennsylvania

Historic Yellow Springs & Chester Springs Studio

Chester Springs, PA; www.yellowsprings.org
Primarily exhibiting contemporary ceramics; functional and sculptural works; representing 11–20 clay artists.

Touchstone Center for Crafts

Farmington, PA; www.touchstonecrafts.org
Primarily exhibiting contemporary ceramics; functional and sculptural works.

Continued on page 64.

Fall 2023



October 21 & 22

Saturday: 10am-5pm

Sunday: Noon-5pm

16hands.com

@16.hands



Andrea Denniston

Studio Tour

Floyd County, in Southwest Virginia's Blue Ridge Mountains.



Wendy Wrenn Werstlein



Josh Manning



Sarah McCarthy



Seth Guzovsky



Hona Leigh Knudsen



Abby Reczek



Carrie Gault

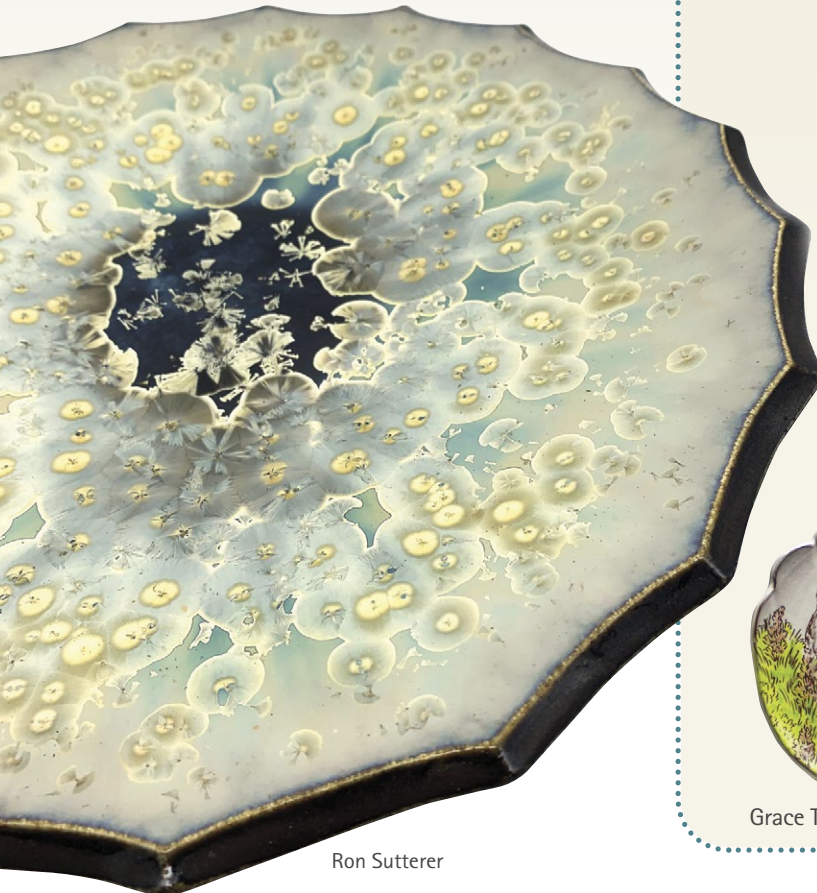
Guest Artists



Joey Sheehan



Jessie Benson



Ron Sutterer



Grace Teessein & Dennis Ritter



Mary Hadden



Jeff Diehl

Pennsylvania (continued)

Wheel of Light Studio LLC

Halifax, PA; www.wheeloflightstudio.com
Primarily exhibiting contemporary ceramics; functional and sculptural works; representing 7 clay artists.

Saint Joseph's University, Merion Hall Gallery

Merion Station, PA; www.sju.edu/gallery
Primarily exhibiting contemporary ceramics; sculptural, functional, figurative, and installation works.

Butternut Gallery

Montrose, PA
Primarily exhibiting contemporary ceramics; functional and sculptural works.

Ceramic Concept

Philadelphia, PA; ceramicconceptphl.com
Primarily exhibiting contemporary functional ceramics; representing 200 clay artists.

Fleisher/Ollman Gallery

Philadelphia, PA; www.fleisher-ollmangallery.com
Primarily exhibiting historical and contemporary ceramics; sculptural and installation works; representing 10 clay artists.

Institute of Contemporary Art, University of Pennsylvania

Philadelphia, PA; icaphila.org
Primarily exhibiting contemporary ceramics; installation works; representing 20+ clay artists.

Philadelphia Museum of Art

Philadelphia, PA; www.philamuseum.org
Primarily exhibiting contemporary and historical ceramics; functional and sculptural works; Dutch ceramics, including tiles, Delft earthenware, and porcelain from the 16th–20th centuries.

The Clay Studio

Philadelphia, PA; www.theclaystudio.org
Primarily exhibiting contemporary ceramics; functional, sculptural, figurative, and installation works; emerging to established ceramic artists from the US, Canada, and some international; representing 400 clay artists.

Worm's Emporium—Art Vendor Mall

Philadelphia, PA; www.wormsemporium.com
Primarily exhibiting contemporary ceramics; functional works; representing 4 clay artists.

Box Heart Gallery

Pittsburgh, PA; www.boxheartgallery.com
Primarily exhibiting contemporary ceramics; sculptural and functional works; living, contemporary, emerging and mid-career artists; representing 5+ clay artists.

Contemporary Craft

Pittsburgh, PA; www.contemporarycraft.org
Primarily exhibiting contemporary ceramics; functional, sculptural, figurative, and installation works; representing 12 clay artists.

The Mattress Factory

Pittsburgh, PA; www.mattress.org
Primarily exhibiting contemporary ceramics; in-resident ceramic artists.

Everhart Museum of Natural History, Science & Art

Scranton, PA; www.everhart-museum.org
Primarily exhibiting historical and contemporary ceramics.

Marywood University Art Galleries

Scranton, PA; www.marywood.edu/galleries
Primarily exhibiting contemporary and historical ceramics; sculptural works; Asian and European ceramics circa 19th–early 20th century.

Wayne Art Center

Wayne, PA; www.wayneart.org
Primarily exhibiting historical and contemporary ceramics; functional and sculptural works; representing 20+ clay artists.

Rhode Island

South County Art Association

Kingston, RI; www.southcountyart.org
Primarily exhibiting contemporary ceramics; functional and sculptural works; representing 92 clay artists.

Arch Contemporary Ceramics

Tiverton, RI; www.archcontemporary.com
Primarily exhibiting contemporary ceramics; functional, sculptural, figurative, and installation works; representing 12 clay artists.



Julia Kunin's *Green Island II*, 8½ in. (22 cm) in height, ceramic, 2022. Image courtesy of the artist and McClain Gallery. This piece was on view at the McClain Gallery (www.mcclaingallery.com) in Houston, Texas, January 28–March 18, 2023.

Tennessee

Derryberry Gallery, Tennessee Tech University

Cookeville, TN; www.tntech.edu
Primarily exhibiting contemporary ceramics; solo exhibitions of traditional utilitarian ware and contemporary installation works; representing 2 clay artists.

Sandra J. Blain Galleries, Arrowmont School of Arts and Crafts

Gatlinburg, TN 37738; www.arrowmont.org
Primarily exhibiting contemporary and historical ceramics; functional, sculptural, and installation works; representing 20+ clay artists.

Companion Gallery

Humboldt, TN; www.companiongallery.com
Primarily exhibiting contemporary ceramics; functional works; representing 50 clay artists.

The Clay Lady's Co-op & Artist Galleries

Nashville, TN; www.theclaylady.com
Primarily exhibiting historical and contemporary ceramics; functional and sculptural works; representing 75 clay artists.

Appalachian Center for Craft

Smithville, TN; www.tntech.edu/craftcenter
Primarily exhibiting contemporary ceramics; sculptural, functional, figurative, and installation works; representing 15–20 clay artists.

Texas

Austin Pottery Studio & Gallery

Austin, TX; www.atxpottery.com
Primarily exhibiting contemporary ceramics; functional works; representing 50+ local and regional clay artists.

Art League of Baytown

Baytown, TX; www.art-league-of-baytown.org
Representing 50+ clay artists.

Center for the Visual Arts, Greater Denton Arts Council

Denton, TX; www.dentonarts.com
Primarily exhibiting historical and contemporary ceramics; functional, sculptural, figurative, and installation works.

Foelber Pottery

Houston, TX; foelberpottery.com
Primarily exhibiting contemporary ceramics; functional, sculptural, and figurative works; representing 8 clay artists.

Houston Center for Contemporary Craft

Houston, TX; www.crafthouston.org
Primarily exhibiting contemporary ceramics; functional and sculptural works; all craft media; representing 50 clay artists.

Museum of Fine Arts, Houston

Houston, TX; www.mfah.org
Primarily exhibiting historical and contemporary ceramics; sculptural, functional, figurative, and installation works.

South Texas College Library Art Gallery

McAllen, TX; library.southtexascollege.edu/LAG
Primarily exhibiting contemporary ceramics; functional, sculptural, and figurative works.

San Angelo Museum of Fine Arts

San Angelo, TX; www.samfa.org
Exhibiting primarily contemporary, some historical ceramics; sculptural, functional, figurative, and installation works; primarily American with other work from the UK, Australia, Europe, and Asia; representing 400+ clay artists.

Mossrock Studio and Fine Art Gallery

The Woodlands, TX; www.mossrock-studio.com
Primarily exhibiting contemporary ceramics; functional, figurative, and sculptural works; representing 12 clay artists.

Vermont

Bennington Museum

Bennington, VT; www.benningtonmuseum.org
Primarily exhibiting historical ceramics; sculptural, functional, and figurative works; Early American work; permanent collection of pottery made in Bennington, including Norton Pottery, the US Pottery Company, and early American redware.

Frog Hollow

Burlington, VT; www.frog hollow.org
Primarily exhibiting historical and contemporary ceramics; functional and sculptural works; 200 juried Vermont artists; representing 20+ clay artists.

DaVallia Art Gallery

Chester, VT; www.thedavallia.com
Primarily exhibiting contemporary ceramics; functional works; representing 1 clay artist.

Chandler Center for the Arts

Randolph, VT; www.chandler-arts.org
Primarily exhibiting contemporary ceramics.

Virginia

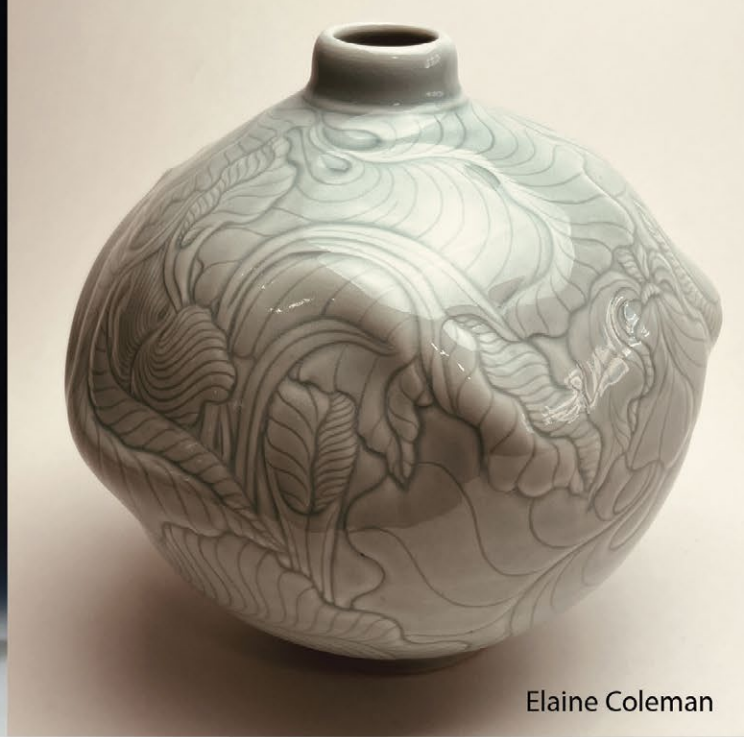
Scope Gallery, The Torpedo Factory

Alexandria, VA; www.scopegallery.org
Primarily exhibiting contemporary ceramics; functional and sculptural works; representing 20+ clay artists.

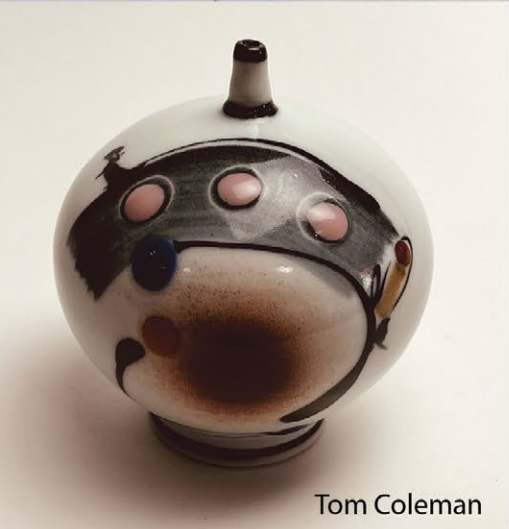
Continued on page 68.



Ben Eberle



Elaine Coleman



Tom Coleman



Jennifer McCurdy

PLINTH GALLERY

A pristine venue exhibiting a carefully curated collection of contemporary ceramic art.

Gallery Hours:
Thursday, Friday
and Saturday 12pm-5pm
and by appointment

3520 Brighton Blvd.
Denver, CO 80216
303-295-0717
galler@plinthgallery.com
www.plinthgallery.com

DADA Denver Art Dealers Association



Alison Rienjtes





SARATOGA
CLAY ARTS
CENTER

CALL FOR ENTRY

COLOR
POP 

JURIED BY DIDEM MERT

A national juried exhibition of
functional works that utilize
color theory to express
thoughts, ideas, and emotions

ENTRY DEADLINE: DECEMBER 5

DETAILS AT
WWW.SARATOGACLAYARTS.ORG



JUROR'S CHOICE
AWARD \$300
DIRECTOR'S CHOICE
AWARD \$100



Walter McConnell
A Theory of Everything: Odd Lot Ancestries 2022

Cast porcelain figurines from commercial molds
3d printed body scans of family and acquaintances
with cobalt and tin in-glaze lusters.

138"L x 144"W x 109"H

© Maxwell Mackenzie

CROSS MACKENZIE GALLERY

Walter McConnell upcoming exhibitions:

2024 Sculpture Space NYC

2025 Houston Center for Contemporary Craft

crossmackenzie.com
walter-mcconnell-studio.squarespace.com

Virginia (continued)

Workhouse Arts Center Ceramics Program

Lorton, VA; www.workhousearts.org
Primarily exhibiting contemporary ceramics; functional, sculptural, figurative, and installation works; representing 7 clay artists.

1708 Gallery

Richmond, VA; www.1708gallery.org
Primarily exhibiting contemporary artwork and ceramics from local, regional, national, and international artists.

Eleanor D. Wilson Museum, Hollins University

Roanoke, VA; www.hollins.edu/museum
Primarily exhibiting contemporary ceramics.

Alma's RVA

Richmond, VA; www.almasrva.com
Primarily exhibiting contemporary craft, including ceramics.

Abby Aldrich Rockefeller Folk Art Museum

Williamsburg, VA; www.colonialwilliamsburg.org/locations/abby-aldrich-rockefeller-folk-art-museum
Primarily exhibiting historical and American ceramics; functional works.

DeWitt Wallace Decorative Arts Museum

Williamsburg, VA; www.colonialwilliamsburg.org/locations/dewitt-wallace-decorative-arts-museum
Primarily exhibiting historical ceramics; functional works; ceramics owned and used in colonial America including work from the US, England, Germany, and China.

Washington

The Island Gallery

Bainbridge Island, WA; www.theislandgallery.net
Primarily exhibiting contemporary ceramics; sculptural, functional, figurative, and installation works; wood-fired ceramics; representing 45 clay artists.

Bellevue Arts Museum

Bellevue, WA; www.bellevuearts.org
Primarily exhibiting contemporary ceramics; functional and sculptural works.

Good Earth Pottery

Bellingham, WA; www.goodearthpots.com
Exhibiting contemporary ceramics; functional and sculptural works; specializing in Pacific Northwest artists, plus guest artists from across the US and Canada; representing 35 clay artists.

J. Franklin Fine Art, Inc.

Camano Island, WA; www.JFranklinFineArt.com
Primarily exhibiting historical ceramics; functional, sculptural, and figurative works; mid-late 20th-century American studio pottery; representing 20+ clay artists.

Kirkland Arts Center

Kirkland, WA; www.kirklandartscenter.org
Primarily exhibiting contemporary ceramics, Pacific Northwest artists; sculptural works; occasionally exhibiting artists from across the US.

Foster/White Gallery

Seattle, WA; www.fosterwhite.com
Primarily exhibiting contemporary ceramics; sculptural and figurative works; representing 2 clay artists.

Gallery IMA

Seattle, WA; www.galleryima.com
Primarily exhibiting contemporary ceramics; sculptural works; representing 18 clay artists.

KOBO Shop and Gallery

Seattle, WA; www.koboseattle.com
Exhibiting contemporary ceramics; functional and sculptural works; representing 25 clay artists.

Pottery Northwest Gallery

Seattle, WA; www.potterynorthwest.org
Primarily exhibiting contemporary ceramics; functional, sculptural, figurative, and installation works.

Seattle Art Museum

Seattle, WA; www.seattleartmuseum.org
Primarily exhibiting contemporary and historical ceramics; sculptural, functional, figurative, and installation works; representing 1000 clay artists.

Traver Gallery

Seattle, WA; www.travergallery.com
Primarily exhibiting contemporary ceramics; functional, sculptural, figurative, and installation works; representing 10 clay artists.

Modern Glaze

Shoreline, WA; www.modernglaze.com
Primarily exhibiting contemporary ceramics; functional, abstract, themed group shows.

West Virginia

David L. Dickirson Fine Arts Gallery at Tamarack

Beckley, WV; www.tamarackwv.com
Primarily exhibiting contemporary ceramics by West Virginia artists; functional and sculptural works; representing 43 clay artists.

Rivers Studio & Gallery

Bolivar, WV; www.annerulethompson.com
Representing 5 clay artists.

Hart Galleries, Stifel Fine Arts Center, Oglebay Institute

Wheeling, WV; www.oionline.com/stifel
Primarily exhibiting contemporary ceramics.

Wisconsin

Rowe Pottery

Cambridge, WI; www.rowepottery.com
Primarily exhibiting hand decorated reduction fired functional pottery, dinnerware and serveware; representing 5 clay artists.

Juddville Contemporary Clay Studio Gallery

Fish Creek, WI; www.instagram.com/juddvilleclaywi
Primarily exhibiting contemporary ceramics; sculptural, figurative, and installation works; large scale clay murals; representing 2 clay artists.

Peninsula School of Art

Fish Creek, WI 54212; www.peninsulaschoolofart.org
Primarily exhibiting historical and contemporary ceramics; functional and sculptural works; American art and crafts; representing 10–20 clay artists.

Chazen Museum of Art, University of Wisconsin-Madison,

Madison, WI; www.chazen.wisc.edu
Primarily exhibiting historical and contemporary ceramics; functional works.

Higher Fire Clay Studio

Madison, WI; www.higherfireclaystudio.com
Primarily exhibiting contemporary ceramics; functional and sculptural works; representing 30 clay artists.

HYART Gallery

Madison, WI; www.hyartgallery.com
Representing 12 clay artists.

James May Gallery

Milwaukee, WI; www.jamesmaygallery.com
Representing 12 clay artists.

Racine Art Museum (RAM)

Racine, WI; www.ramart.org
Primarily exhibiting contemporary ceramics; functional works; RAM's collection of ceramics, which focuses on mid- to late- 20th century American clay.

Wilson Creek Pottery

Spring Green, WI; www.wilsoncreekpottery.com
Primarily exhibiting functional stoneware; representing 1 clay artists.

Abel Contemporary Gallery

Stoughton, WI; www.abelcontemporary.com
Primarily exhibiting contemporary ceramics; functional, sculptural, figurative, and installation works; American fine art and craft; representing 20+ clay artists.

Wyoming

Margo's Pottery & Fine Crafts

Buffalo, WY; www.margospottery.com
Primarily exhibiting contemporary ceramics; functional works; representing 9–12 clay artists.



Lauren Tucci's *Wretched Couch and Little Wretched*, 24 in. (61 cm) in height, earthenware, paint, found material, 2019–2021. Photo: *Gilded Pear Gallery*. This piece was on view at *Gilded Pear Gallery* (www.gildedpeargallery.com) from November 13, 2022–January 27, 2023.

Continued on page 70.

108 CONTEMPORARY

Art. Craft. Design.

108|Contemporary is a non-profit fine craft organization in the heart of the Tulsa Arts District offering a free gallery space with ever changing exhibitions, a shop filled with handmade goods from Oklahoma artists, and educational programming for all ages.



Linda Lopez & Mathew McConnell: Live from the Moon

Watch the exhibition virtual tour on our website and social media!

10th Anniversary at 108!

We are proud to be celebrating our 10th Anniversary in the Tulsa Arts District! Find more information on our website.



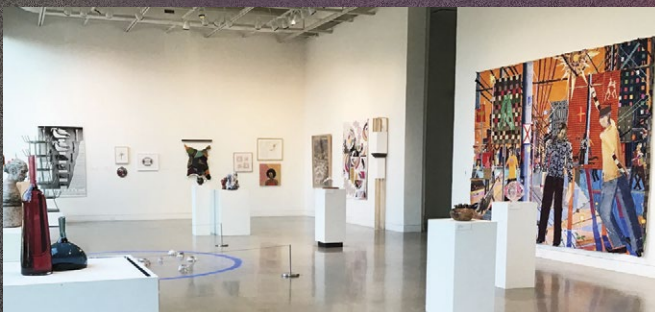
The State of Craft 2023

December 1, 2023 - January 21, 2024

108|Contemporary's Oklahoma member exhibition juried by Mary Anne Jordan!

SHOP 108 (in gallery and online)

Find gifts and goodies hand-made by Oklahoma artists and craftspeople! Shop online at shop.108contemporary.org



CALL FOR ENTRIES: VisionMakers 2024

Regional Biennial Exhibition with cash awards! Apply on our website.

Wed - Sun | 12 - 5 pm

FREE ADMISSION

918.895.6302
108contemporary.org
108 East Reconciliation Way, Tulsa OK 74103

Australia

Canberra Potters Watson Arts Centre

Watson, ACT; www.canberrapotters.com.au
Primarily exhibiting contemporary ceramics; sculptural, functional, and figurative works.

Narek Galleries

Bermagui, NSW; www.narekgalleries.com
Primarily exhibiting contemporary Australian ceramics; functional, sculptural, and installation works; representing 15 clay artists.

Object: Australian Centre for Craft and Design

Darlinghurst, Australia; australiandesigncentre.com
Primarily exhibiting contemporary ceramics.

Rosedale Street Gallery

Dulwich Hill, NSW; facebook.com/Rosedalestreetgallery
Primarily exhibiting contemporary ceramics; functional and sculptural works.

Newcastle Art Gallery

Newcastle, NSW; www.nag.org.au
Primarily exhibiting contemporary and historical ceramics: Australian (post-WWII); Japanese (Sodeisha, early 19th-century, and post-WWII); representing over 500 clay artists.

Sabbia Gallery

Redfern, NSW; www.sabbiagallery.com
Primarily exhibiting contemporary ceramics; functional, sculptural, figurative, and installation works; Australian ceramics; representing 12 clay artists.

Robin Gibson Gallery

Sydney, NSW; www.robingibson.net
Primarily exhibiting contemporary ceramics; functional, sculptural, figurative, and installation works.

Falls Gallery

Wentworth Falls, NSW; www.fallsgallery.com.au
Primarily exhibiting contemporary Australian ceramics; Japanese-influenced studio ceramics.

JamFactory

Adelaide, SA; www.jamfactory.com.au
Primarily exhibiting contemporary ceramics; sculptural, functional, and figurative works; Australian ceramics; representing 17 clay artists.

Potiche Gallery at Bendigo Pottery

Epsom, VIC; www.bendigopottery.com.au
Primarily exhibiting contemporary ceramics; Victorian regional ceramics; representing Tony Barnes, Su Hanna, Sue James, Graham Masters, Kaye Poulton, and Scott Wileman.

Skepsi Gallery

Malvern, VIC; www.skepsigallery.com.au
Primarily exhibiting contemporary ceramics; Australian contemporary studio ceramics; representing 50 clay artists.

Shepparton Art Museum

Shepparton, VIC; www.sheppartonartmuseum.com
Primarily exhibiting contemporary and historical ceramics; sculptural, functional, figurative or installation works; Australian ceramics; representing 50+ clay artists.

Belgium

Modern Shapes Gallery

Antwerp, Belgium; www.modernshapes.com
Primarily exhibiting contemporary, sculptural, abstract ceramics; representing 12 clay artists.

Puls Contemporary Ceramics

Brussels, Belgium; www.pulsceramics.com
Primarily exhibiting contemporary international ceramics.

Bermuda

Jon Faulkner Gallery

Sandys, Bermuda; www.jonfaulknergallery.com
Primarily exhibiting contemporary ceramics; functional works; Bermuda potters and artists; representing 8 clay artists.

Canada

Willock & Sax Gallery

Banff, Alberta; www.willockandsaxgallery.com
Primarily exhibiting historical and contemporary ceramics; sculptural and functional works; Western Canadian ceramic artists; representing 14 clay artists.

Bluerock Gallery

Black Diamond, Alberta; www.bluerockgallery.ca
Representing 16 clay artists.



Samantha Momeyer's vase, 24 in. (61 cm) in height, wheel-thrown and stained porcelain, colored porcelain inclusions, underglaze wash, fired to cone 5. *Photo: Silvia Palmer.* This vase was on view at In Tandem Gallery (www.intandemgallery.com) July 4–August 4, 2023.

Christine Klassen Gallery

Calgary, Alberta; www.christineklassengallery.com
Primarily exhibiting historical and contemporary ceramics; sculptural works.

Alberta Craft Council Gallery

Edmonton, Alberta; www.albertacraft.ab.ca
Primarily exhibiting contemporary ceramics; functional and sculptural works; Alberta ceramic artists; representing 47 clay artists.

The Potters Place Gallery

Courtenay, British Columbia; www.thepottersplace.ca
Primarily exhibiting contemporary ceramics; functional, figurative, and sculptural works; representing 29 clay artists.

The Museum of Anthropology, University of British Columbia

Vancouver, British Columbia; www.moa.ubc.ca
Primarily exhibiting historical and contemporary functional and figurative ceramics. World-wide collection: East Asian (primarily Chinese); European (15th–19th century); Central/South American (mainly Peruvian); and contemporary British Columbian works.

La Guilde

Montreal, Québec; laguide.com
Primarily exhibiting contemporary (mainly), but also historical ceramics; sculptural, figurative, installations, some functional works; established and emerging artists based in Canada; representing 11 clay artists.

Centre Materia

Québec City, Québec; www.centremateria.com
Representing 8–10 clay artists.

General Fine Craft

Almonte, Ontario; www.generalfinecraft.com
Primarily exhibiting contemporary ceramics; functional, sculptural, figurative, and installation works; Canadian artists; representing 40+ clay artists.

Art Gallery of Burlington

Burlington, Ontario; www.agb.life
Primarily exhibiting contemporary; sculptural and functional ceramics; Canadian artists.

L.A. Pai Gallery

Ottawa, Ontario; www.lapaigallery.com
Primarily exhibiting contemporary ceramics; sculptural works; Canadian artists.

Gardiner Museum

Toronto, Ontario; www.gardinermuseum.com
Representing 10+ clay artists.

Canadian Clay and Glass Gallery

Waterloo, Ontario; www.theclayandglass.ca
Primarily exhibiting sculptural, installation, and functional ceramics; Canadian and international ceramic and glass artists.

MacKenzie Art Gallery

Regina, Saskatchewan; www.mackenzie.art
Primarily exhibiting historical and contemporary ceramics; functional, sculptural, figurative, and installation works; representing 1 clay artist.

SCC Gallery

Saskatoon, Saskatchewan; www.saskcraftcouncil.org
Primarily exhibiting contemporary ceramics; sculptural, functional, figurative, and installation works; Canadian artwork; representing 60 clay artists.

Croatia

Croatian Ceramic Association—KERAMEIKON

Varazdin, Croatia; www.kerameikon.com
Primarily exhibiting contemporary sculptural and figurative ceramics; representing 30+ clay artists.

Denmark

Grønbechs Gård

Hasle, Denmark; www.groenbechsgaard.dk
Representing 100 clay artists.

CLAY Keramikmuseum Danmark / CLAY Museum of Ceramic Art

Middelfart, Denmark; www.claymuseum.dk
Primarily exhibiting historical and contemporary ceramics; functional, sculptural, figurative, and installation works; mostly Danish ceramics, some international ceramics; permanent collections; representing 200+ clay artists.

Continued on page 74.

OPPORTUNITIES

AT **LIGHTHOUSE ARTCENTER** TEQUESTA, FL

EXHIBITION

NATE DITZLER &
LAURA KONECNE, 2023



LITTLE LUSH

Functional Ceramics Exhibition September 7 - December 2, 2023

Featuring a stunning juried selection of functional small-scale works. Ceramicists from around the nation have masterfully created a diverse range of useful contemporary art objects. From delicate teacups and bowls to intricate vases and pitchers.

Awards Reception: September 21, 5-7pm

Judges: Nate Ditzler & Laura Konecne

For more information: LighthouseArts.org/Little-Lush/

CALL TO ARTISTS

SAM BRIEGEL, 2023



3-WINGS

Visiting Artist Fellowship View Our Website & Apply Now

This Fellowship provides a work compensation for an established artist in the ceramics field to visit Lighthouse ArtCenter Ceramic Studio over a 2-week period, between November and April.

INCLUDES: Generous Stipend, 10x10 work space, Slide show/artist talk, 2-3 day Workshop, demonstrations, all materials and firing fees, exhibiting work in our Gallery.

Apply Now: LighthouseArts.org/Exhibitions/Call-to-Artists/

CALL TO ARTISTS

LUSH 2 EXHIBITION, 2022



SAVE THE DATE

Upcoming Exhibition: LUSH 3 October 15 - December 7, 2024

Showcasing current and innovative practices in the field of ceramics which utilize clay as the primary material. Open nationally to all emergent and established ceramics artists who create functional, sculptural and experimental pieces in a variety of artistic expressions, subjects and techniques.

For more information:

LighthouseArts.org/Exhibitions/Call-to-Artists/

LIGHTHOUSE **ARTCENTER**
GALLERY & SCHOOL OF ART



373 Tequesta Drive, Tequesta, FL 33469 • (561) 746-3101

JOIN US

BE A PART OF THIS ANNUAL EVENT!

WHEELING, WEST VIRGINIA
FEBRUARY THROUGH MARCH 2024



CERAMICS TAKE OVER WHEELING '24

Ceramics Take Over Wheeling is a citywide event that will celebrate ceramic artists and clay enthusiasts alike. Various galleries in the “Friendly City” are excited about this partnership; and will be showcasing ceramic art during the months of February and March of 2024.

We invite you to visit Wheeling, West Virginia! Take part in a workshop, an art opening, a pottery throw down, or visit local eateries and purchase a handmade mug. Please visit our website for the schedule of events and more information.

CERAMICSTAKEOVERWHEELING.COM



JURIED EXHIBITIONS

EARTH & FIRE

Earth and Fire is a national juried ceramic exhibition offering **\$7,000 total cash prizes. Top prize \$4,000.**

In 2023, we had 162 artists from 34 states enter 307 works for jurying. There were 78 artists representing 29 states and 99 ceramic works selected for the exhibit.

February 23 – March 30, 2024
Stifel Fine Arts Center

Juried by Shoji Satake

Apply at CallForEntry.org

**DEADLINE TO ENTER—
JANUARY 12, 2024 11:59PM MTN TIME**

WEST LIBERTY UNIVERSITY INTERCOLLEGIATE CERAMICS EXHIBITION

This intercollegiate juried ceramic exhibition is offering **\$4000 total cash prizes. Top prize \$2000.**

February 21 – March 14, 2024
West Liberty University

Juried by Josh Manning

**CHECK UNIVERSITY WEBSITE FOR
SUBMISSION DETAILS**



Ken
McCollum
1st place
Earth & Fire

**MANY OTHER CERAMIC
EXHIBITS INCLUDING —**

SHOJI SATAKE

March 1 – May 19, 2024
The Gallery at Towngate

GUEST ARTISTS AT

Artworks Around Town
The Artisan Center
Clientele Art Studio

And More...



Shawn
O'Connor
3rd place
Earth & Fire



Clarissa
Pezone
2nd place
Earth & Fire



Shoji
Satake

WORKSHOPS

SHOJI SATAKE

February 24, 2024 • 10a–4p
Stifel Fine Arts Center

KEN MCCOLLUM

March 9, 2024 • 10a–4p
Stifel Fine Arts Center

AND MORE...

Please check our website for more details.

MORE DETAILS AT CERAMICSTAKEOVERWHEELING.COM



A.I.R GALLERY PRESENTS:
RUN AMOK: CERAMIC SCULPTURE
BY JENNIFER MCCANDLESS

OCT. 14- NOV. 12, 2023
WED-SUN, 12-6PM

A.I.R. GALLERY
155 PLYMOUTH STREET
BROOKLYN NY 11201

FOR MORE INFO:
(212) 255-6651
INFO@AIRGALLERY.ORG

BABY BOOMER BAD ASS WITH
PATRIARCHAL SHOULDER PARROT

England

Primavera

Cambridge, Cambridgeshire; primaveragallery.co.uk
Primarily exhibiting contemporary work but also a few historical pieces to show the inspiration; functional, sculptural, and figurative works; British ceramics; representing 100 clay artists.

The Arc

Cheshire, Chester; thearcgallery.co.uk
Primarily exhibiting contemporary ceramics; sculptural, functional, and figurative works; studio and domestic ware; representing 30–40 clay artists.

One Village

Woodstock, Charlbury; www.onevillage.com
Primarily exhibiting contemporary ceramics; mostly functional works.

Yew Tree Gallery

Penzance, Cornwall; www.yewtreegallery.com
Primarily exhibiting contemporary ceramics; representing Jill Fanshawe Kato, David Garland, Laurel Keeley, Nigel Lambert, Sophie MacCarthy, John Maltby, Sutton Taylor, and Judith Rowe.

Leach Pottery

St. Ives, Cornwall; www.leachpottery.com
Primarily exhibiting historical and contemporary ceramics; functional works; focus on contemporary and 20th-century studio pottery; representing 75 clay artists.

St. Ives Ceramics

St. Ives, Cornwall; www.st-ives-ceramics.co.uk
Primarily exhibiting historical and contemporary ceramics; functional works; studio pottery; representing 70 clay artists.

Blackwell

Bowness-on-Windermere, Cumbria; www.lakelandarts.org.uk/blackwell
Primarily exhibiting historical (Arts & Crafts Movement) and contemporary functional ceramics.

Farfield Mill Arts & Heritage Centre

Sedbergh, Cumbria; www.farfieldmill.org
Primarily exhibiting contemporary ceramics; functional works; representing 12 clay artists.

Derby Museum & Art Gallery

Derby, Derbyshire; www.derbymuseums.org
Primarily exhibiting historical ceramics; functional and figurative works; collections of Derby porcelain from 1750 to present and Derbyshire pottery from Langley Mill, Woodville, Denby and the Chesterfield area, including 20th-century studio pottery.

The Devon Guild of Craftsmen

Bovey Tracey, Devon; www.crafts.org.uk
Primarily exhibiting contemporary ceramics; functional, sculptural, and figurative works; Guild representing over 70 ceramic artists from the South West of England. Exhibitions feature work by national and international makers; representing 75 clay artists.

Simon Drew Gallery

Dartmouth, Devon; www.simondrew.co.uk
Primarily exhibiting contemporary English ceramics; functional and sculptural works; representing 25 to 30 ceramic artists.

45 Southside Gallery

Plymouth, Devon; www.45southside.co.uk
Primarily exhibiting contemporary ceramics; functional, sculptural, and figurative works; Devon or Cornwall artists; representing 20 clay artists.

Lantic Gallery

Tiverton, Devon; lanticgallery.co.uk
Primarily exhibiting contemporary ceramics; functional and sculptural works; representing 15 clay artists.

Walford Mill Education Trust Ltd

Wimborne, Dorset; walfordmillcrafts.co.uk
Primarily exhibiting contemporary ceramics.

Sculpt Gallery

Tiptree, Essex; www.sculptgallery.com
Primarily exhibiting contemporary ceramics; sculptural and figurative works; contemporary British art ceramics; representing 10 clay artists.

The Guild at 51

Cheltenham, Gloucestershire; guildcrafts.org.uk
Primarily exhibiting contemporary ceramics; functional and sculptural works; work by Gloucestershire Guild of Craftsmen members; representing 12 clay artists.

New Brewery Arts

Cirencester, Gloucestershire; newbreweryarts.org.uk
Primarily exhibiting contemporary ceramics; functional, sculptural, and figurative works; representing 15 clay artists.

Quay Arts

Isle of Wight, Hampshire; www.quayarts.org
Primarily exhibiting contemporary ceramics; functional and sculptural works.

Bluestone Gallery

Hay-on-Wye, Hereford; www.bluestonegallery.com
Primarily exhibiting contemporary ceramics; sculptural, functional, and figurative works; representing 15 clay artists.

The Haymakers Gallery

Hay-on-Wye, Hereford; haymakers.co.uk
Primarily exhibiting contemporary functional and figurative ceramics.

Old Chapel Gallery, The Lancashire Makers

Pembroke, Herefordshire; oldchapelgallery.co.uk
Primarily exhibiting contemporary British ceramics; sculptural, functional, and figurative works; country style.

Platform Gallery and VIC

Clitheroe, Lancashire; ribblevalley.gov.uk/platformgallery
Primarily exhibiting contemporary British craft ceramics; functional works; representing 30 clay artists.

The National Centre for Craft and Design

Sleaford, Lincolnshire; nationalcraftanddesign.org.uk
Primarily exhibiting contemporary ceramics; sculptural and functional works; representing 15 clay artists.

Bluecoat Display Centre

Liverpool, Merseyside; www.bluecoatdisplaycentre.com
Primarily exhibiting contemporary ceramics; functional and sculptural works; mainly UK-based ceramic artists; representing 60+ clay artists.

Cecilia Colman Gallery

London, England; www.ceciliacolmangallery.com
Primarily exhibiting contemporary British ceramics; sculptural and figurative works; representing 40 clay artists.

Contemporary Applied Arts Gallery

London, England; www.caa.org.uk
Primarily exhibiting contemporary ceramics; functional, sculptural, figurative and installation works; British craft; representing 90+ clay artists.

Contemporary Ceramics

London, England; www.contemporaryceramics.uk
Primarily exhibiting contemporary ceramics; functional, sculptural, and figurative works; specialize in British-based artists; representing 90–100 clay artists.

Corvi-Mora

London, England; www.corvi-mora.com
Primarily exhibiting contemporary ceramics; sculptural, functional, figurative, or installation works.

Flow Gallery

London, England; www.flowgallery.co.uk
Primarily exhibiting contemporary ceramics; functional and sculptural works; International ceramics; representing 40 clay artists.

Grove Vale Ceramics

London, England; www.grovevaleceramics.co.uk
Primarily exhibiting contemporary sculptural and functional ceramics by UK artists.

Pippy Houldsworth Gallery

London, England; www.houldsworth.co.uk
Primarily exhibiting contemporary ceramics; sculptural works.

Vessel Gallery

London, England; www.vesselgallery.com
Primarily exhibiting contemporary ceramics; sculptural works; vessels and sculpture.

Tristan Hoare

London, England; www.tristanhoare.co.uk
Primarily exhibiting contemporary ceramics; sculptural works; a range of contemporary art; representing 3–4 clay artists.

Harlequin Gallery

London, England; www.studio-pots.com
Primarily exhibiting historical ceramics; functional works; emphasis on wood-fired work.

Marsden Woo Gallery

London, England; www.marsdenwoo.com
Primarily exhibiting contemporary ceramics; sculptural and figurative works; representing Gordon Baldwin, Alison Britton, Ken Eastman, Philip Eglin, Kerry Jameson, Chun Liao, Nao Matsunaga, Carol McNicoll, Sara Radstone, James Rugler, Martin Smith, Dawn Youll.

Petronilla Silver

London, England; www.petronillasilver.co.uk
Primarily exhibiting contemporary ceramics; functional, sculptural, and installation works; representing 6 clay artists.

The British Museum

London, England; www.britishmuseum.org
Primarily exhibiting historical ceramics.

Victoria & Albert Museum

London, England; www.vam.ac.uk
Primarily exhibiting contemporary and historical ceramics; sculptural and figurative works; Post-Medieval European, North American, Middle Eastern, and East Asian ceramics.

Maud & Mabel

Hampstead, London; www.maudandmabel.com
Representing 55 clay artists.

Manchester Craft & Design Centre

Manchester, England; craftanddesign.com
Primarily exhibiting contemporary ceramics.

The Harley Gallery and Foundation

Welbeck, Nottinghamshire; www.harleygallery.co.uk
Primarily exhibiting contemporary ceramics.

Bircham Gallery

Holt, Norfolk; www.birchamgallery.co.uk
Primarily exhibiting contemporary ceramics; functional, sculptural, and figurative works; British studio ceramics; representing 30+ clay artists.

The Ropewalk

Barton upon Humber, North Lincolnshire; www.the-ropewalk.co.uk
Primarily exhibiting contemporary British ceramics; functional works; representing 20+ clay artists.

Pyramid Gallery

York, North Yorkshire; www.pyramidgallery.com
Primarily exhibiting contemporary British ceramics; sculptural, functional, and figurative works.

Saltbox Gallery and Workshop

York, North Yorkshire; saltboxgallery.co.uk
Primarily exhibiting contemporary ceramics; sculptural, functional, and figurative works; representing 15 clay artists.

The Ashmolean

Oxford, England; www.ashmolean.org
Primarily exhibiting historical and contemporary ceramics.

David Mellor Design Ltd.

Hathersage, Sheffield; www.davidmellordesign.com
Primarily exhibiting contemporary ceramics; functional works; British domestic pottery.

Continued on page 76.

25th San Angelo National Ceramic Competition

In loving memory of Darlene Williams

April 19 – June 23, 2024

Juror: Louise Rosenfield

Invited Artist: Chase Kahwinhut Earles

Call for Entries online December 1:

www.samfa.org

Entry deadline: January 31, 2024

Sponsored by:
San Angelo Museum Endowment for
Ceramic Events
Darlene and John Williams

Photo: 24th San Angelo National Ceramic
Competition, 2022



SAN ANGELO MUSEUM OF FINE ARTS

1 Love Street, San Angelo, TX 76903

325-653-3333

www.samfa.org

England (continued)

Twenty Twenty Gallery

Cross Houses, Shrewsbury; twenty-twenty.co.uk
Primarily exhibiting contemporary ceramics; figurative, sculptural, and functional works; representing 4 clay artists.

Rachel Bebb Contemporary (Formerly The Garden Gallery)

Broughton, Stockbridge; rachelbebbcontemporary.com
Primarily exhibiting contemporary ceramics; sculptural works; representing 7 clay artists.

The Potteries Museum & Art Gallery

Hanley, Stoke-on-Trent; www.stokemuseums.org.uk
Primarily exhibiting historical and contemporary ceramics; functional, sculptural, and figurative works; Staffordshire, 20th-century British industrial and studio pottery, East Asian and Islamic ceramics, and Italian Renaissance majolica; representing 200+ clay artists.

EJaRt Creative (EJR Ceramics Ltd)

Hasketon, Suffolk; www.ejartcreative.co.uk
Primarily exhibiting contemporary ceramics; functional and sculptural works.

Crafts Study Centre, University for the Creative Arts

Farnham, Surrey; csc.ucreative.ac.uk
Primarily exhibiting 20th- and 21st-century functional ceramics; multimedia, representing approximately 40 ceramic artists.

New Ashgate Gallery

Farnham, Surrey; www.newashgate.org.uk
Primarily exhibiting contemporary British ceramics; functional, sculptural, installation, and figurative works.

The Hannah Peschar Sculpture Garden

Ockley, Surrey; www.hannahpescharsculpture.com
Primarily exhibiting contemporary ceramics; sculptural works; representing 6 clay artists.

The Green Tree Gallery

Haywards Heath, Sussex; greentreegallery.co.uk
Primarily exhibiting contemporary ceramics; sculptural, figurative, and functional works.

The Sussex Guild Shop & Gallery

Lewes, Sussex; www.thesussexguild.co.uk
Primarily exhibiting contemporary ceramics; functional works; Sussex and surrounding counties; representing 8 clay artists.

Rye Art Gallery

Rye, Sussex; ryeartgallery.co.uk
Primarily exhibiting contemporary ceramics; sculptural, functional, figurative, and installation works.

Bilston Craft Gallery

Bilston, Wolverhampton, West Midlands; www.wolverhamptonart.org.uk/visit/Bilston
Primarily exhibiting contemporary ceramics; functional works; contemporary craft; representing 12 clay artists.

RBSA Gallery

Birmingham, West Midlands; www.rbsa.org.uk
Primarily exhibiting contemporary ceramics; functional, sculptural, and figurative works; the RBSA Gallery welcomes artwork from UK and international artists. The majority of our exhibitions feature UK artists, particularly from the Midlands.

Bevere Gallery

Worcester, West Midlands; beveregallery.com
Primarily exhibiting contemporary ceramics; sculptural works; British studio ceramics; representing 150 clay artists.

The Craft Centre and Design Gallery

Leeds, West Yorkshire; www.craftcentreleeds.co.uk
Primarily exhibiting contemporary ceramics; functional and sculptural works; domestic and studio ceramics; representing 100 clay artists.



Koie Ryoji's Kohiki-style painted double-glazed vase with calligraphic splash patterning, 8½ in. (22 cm) in height, stoneware, white slip, iron-oxide glaze, ca. 1990. Photo: Richard Goodbody. Courtesy of Joan B Mirviss LTD. This vase was on view at Joan B Mirviss LTD (www.mirviss.com) in New York, New York, January 20–29, 2023.

Yorkshire Sculpture Park

Wakefield, Yorkshire; ysp.org.uk
Primarily exhibiting contemporary ceramics; functional works; representing 50 clay artists.

France

Galerie Capazza

Nançay, Cher; www.galerie-capazza.com
Primarily exhibiting contemporary ceramics; sculptural, functional, and figurative works; both national and international ceramics; representing 30 clay artists.

Musée de la Poterie Méditerranéenne

Saint-Quentin-la-Poterie, France; musee-poterie-mediterranee.com
Primarily exhibiting historical and contemporary ceramics; functional works; traditional ceramics from Mediterranean countries.

Terra Viva Galerie

Saint-Quentin-la-Poterie, France; www.terraviva.fr
Primarily exhibiting contemporary ceramics; functional, sculptural, and figurative works; French and European ceramics; representing 20+ clay artists.

Centre Céramique Contemporaine

La Borne, Henrichemont; www.laborne.org
Primarily exhibiting contemporary ceramics; functional and sculptural works; representing 60 clay artists.

Sèvres, Cité de la céramique

Sèvres, France; www.musee-ceramique-sevres.fr
Primarily exhibiting contemporary and historical ceramics; functional, sculptural, figurative, and installation works; Sèvres production forms the collection's centerpiece; representing 1 clay artist.

Fondation d'entreprise Bernardaud

Limoges, France; www.bernardaud.com
Primarily exhibiting contemporary ceramics; sculptural, figurative, installation; terra cotta, earthenware, stoneware, bone china, porcelain works; international artists; representing 14–18 clay artists.

Bernard Palissy Museum,

Lacapelle-Biron, France; www.museepalissy.net
Primarily exhibiting contemporary and historical ceramics; representing 12 clay artists.

Musée Magnelli, Musée de la Céramique

Vallauris, France; www.vallaurisgolfejuan-tourisme.fr/que-faire/culture-visites/chateau-musee
Primarily exhibiting historical and contemporary ceramics

A.I.R. Vallauris and Galerie Aqi Siam Ben

Vallauris, France; www.air-vallauris.com
Primarily exhibiting contemporary ceramics; sculptural, functional, figurative, and installation works; a wide variety of clays, glazes, and firing techniques; representing as many as 80 artists.

Germany

Galerie Theis-Keramik

Berlin, Germany; www.galerietheis.de; www.facebook.com/galerietheis
Primarily exhibiting contemporary and historical ceramics; functional and sculptural works; studio pottery from Germany, Austria, and Switzerland; representing 30 clay artists.

feuer-zeug-keramik

Berlin, Germany; feuer-zeug-keramik.de
Primarily exhibiting contemporary ceramics, functional works.

Continued on page 78.

THE BASCOM

A CENTER FOR THE VISUAL ARTS

The Bascom creates visual art experiences that inspire and empower individuals and communities through **seeing, thinking, and doing**. For more than 30 years, we've served as a vital cultural resource for Western North Carolina, and we continue to build on that legacy through our work and advocacy for the arts.



Byron Tenesaca Photography

EDUCATION



Kirsten Stingle, *Odyssey of Belonging*

EXHIBITIONS



David Stuempfle demonstrates during a workshop.

EXPERIENCES

THE HEIGHT OF HAPPINESS



HIGHLANDS

NORTH CAROLINA

— ELEV. 4118 —

THE BASCOM

A CENTER FOR THE VISUAL ARTS

TheBascom.org | 828.526.4949
323 Franklin Road, Highlands, NC

Germany (continued)

Zentrum für Keramik

Berlin, Germany; www.ceramics-berlin.de
Primarily exhibiting contemporary ceramics.

Keramik-Museum Berlin (KMB)

Berlin-Charlottenburg, Germany; www.keramik-museum-berlin.de
Primarily exhibiting historical and contemporary ceramics; functional, sculptural, and figurative works; Central European ceramics.

Töpfermuseum Duingen

Duingen, Germany; www.toepfermuseum-duingen.de
Primarily exhibiting historical ceramics; functional works; Duingen ceramics; representing 1 clay artist.

Hetjens-Museum Deutsches Keramikmuseum

Düsseldorf, Germany; duesseldorf.de/hetjens
Primarily exhibiting historical ceramics.

Museum Eckernforde

Eckernforde, Germany; www.museum-eckernfoerde.de
Primarily exhibiting contemporary ceramics; functional works.

KERAMION

Frechen, Germany; www.keramion.de
Primarily exhibiting historical and contemporary ceramics; sculptural and figurative works; Bartmann-jugs, Rhenish stoneware and earthenware; ceramics mainly from the second half of the 20th century; representing 1 clay artist.

Galerie Bollhorst

Freiburg, Germany; www.galerie-bollhorst.de
Primarily exhibiting contemporary ceramics; representing 40+ clay artists.

Galerie Marianne Heller

Heidelberg, Germany; www.galerie-heller.de
Primarily exhibiting contemporary and international ceramics; sculptural and vessels works.

Kasino

Hohr-Grenzhausen, Germany; www.kultur-kasino.de
Primarily exhibiting contemporary ceramics; functional, sculptural, and figurative works; contemporary German and European ceramics.

Keramikmuseum Westerwald, German Collection for Historical and Contemporary Ceramics

Höhr-Grenzhausen, Germany; www.keramikmuseum.de
Primarily exhibiting contemporary and historical ceramics; sculptural, functional, and figurative works; representing 25 clay artists.

Grassi Museum für Angewandte Kunst

Leipzig, Germany; www.grassimuseum.de
Primarily exhibiting historical and contemporary ceramics; representing 1500–2000 clay artists.

Ofen- und Keramikmuseum / Hedwig Bollhagen Museum

Velten, Germany; www.okmhb.de
Primarily exhibiting historical ceramics; functional and figurative works; representing 20+ clay artists.

Internationales Keramik-Museum

Weiden, Germany; www.dnstdm.de
Primarily exhibiting historical and contemporary ceramics; functional works; representing 100+ clay artists.

Belinda Berger Gallery

Westerstede, Germany; www.belindaberger.de
Primarily exhibiting contemporary ceramics; functional, sculptural, and figurative works.

Hungary

MUSEION KECSKEMET

Kecskemét, Hungary; www.icshu.org
Primarily exhibiting contemporary ceramics; exhibitions by Hungarian and international artists; representing 12 clay artists.

Ireland

Lavit Gallery

Cork, Ireland; www.lavitgallery.com
Primarily exhibiting contemporary ceramics; sculptural and installation works; representing 10 clay artists.

Gallery Zozimus

Dublin, Ireland; www.galleryzozimus.ie
Primarily exhibiting contemporary ceramics; sculptural and figurative works; 95% Irish made, also work from the US, Holland, Czech Republic; representing 60 clay artists.

Italy

La Meridiana International Ceramics School

Certaldo, Italy; www.lameridiana.fi.it/residency
Primarily exhibiting contemporary ceramics; functional and sculptural works; representing 3 clay artists.

C.R.E.T.A. Rome

Rome, Italy; www.cretarome.com
Primarily exhibiting international and contemporary ceramics; functional, sculptural, figurative, and installation works; representing 20+ clay artists.

Japan

Museum of Modern Ceramic Art

Tajimi City, Gifu Prefecture Japan; cpm-gifu.jp/museum
Primarily exhibiting contemporary and historical ceramics; functional, sculptural, figurative, installation works; Japanese ceramics from Meiji period to present, international ceramics from the time of Art Nouveau onwards; representing 425 clay artists.

The Museum of Arts & Crafts

Itami, Hyogo; japanese-museum.com/the-museum-of-art-craftitami-hyogo
Primarily exhibiting contemporary ceramics; sculptural and functional, tableware made by up-and-coming ceramic artists; representing 40 clay artists.

The Shigaraki Ceramic Cultural Park

Koka City, Shiga Prefecture; www.sccp.jp/e
Primarily exhibiting contemporary ceramics.

A Lighthouse called Kanata (Formerly Yufuku Gallery)

Minato-Ku, Tokyo; www.lighthouse-kanata.com
Primarily exhibiting contemporary ceramics; representing 10 clay artists.

21_21 Design Sight

Minato-ku, Tokyo Prefecture; www.2121designsight.jp
Primarily exhibiting contemporary ceramics.

Gallery St. Ives

Setagaya-ku, Tokyo; www.gallery-st-ives.co.jp
Primarily exhibiting contemporary and historical ceramics; functional and figurative works; British and Japanese ceramics from the 20th and 21st centuries.

Mexico

Ángulo Cero

Mexico City, Mexico; www.angulo0.com
Primarily exhibiting contemporary ceramics; functional, sculptural, and installation works; ceramics by Mexican and Latam artists that mix utilitarian with art; representing 5 clay artists.

The Netherlands

The Princessehof National Museum of Ceramics

Leeuwarden, The Netherlands; www.princessehof.nl
Primarily exhibiting contemporary and historical ceramics; functional, sculptural, figurative, and installation works.

Keramiekcentrum Tiendschuur Tegelen

Tegelen, The Netherlands; www.tiendschuur.net
Primarily exhibiting historical and contemporary ceramics; sculptural, functional, and figurative works.

Design Museum Den Bosch

Hertogenbosch, The Netherlands; www.designmuseum.nl
Primarily exhibiting contemporary and historical ceramics.

Works Jeroen Bechtold

Amsterdam, The Netherlands; www.jeroenbechtold.nl
Primarily exhibiting contemporary ceramics; sculptural works; porcelain and glaze works; representing 1 clay artist.

Galerie Terra Delft

Delft, The Netherlands; www.terra-delft.nl
Primarily exhibiting contemporary European and Chinese ceramics; sculptural, functional, figurative, and installation works; representing 55 clay artists.

Museum Het Prinsenhof

Delft, The Netherlands; www.prinsenhof-delft.nl
Primarily exhibiting historical ceramics; functional, sculptural, and figurative works; small presentation of historical Delftware; representing 20+ clay artists.

Rijksmuseum van Oudheden, National Museum of Antiquities

Leiden, Netherlands; www.rmo.nl
Primarily exhibiting historical ceramics; multimedia works; The Dutch National Museum of Antiquities brings archaeology and the ancient world to life. Civilizations of Egypt, the Classical World, the ancient Near East, and the Netherlands in prehistoric, Roman, and medieval times.

Norway

Galleri Format Oslo

Oslo, Norway; www.format.no
Primarily exhibiting contemporary ceramics; functional, sculptural, and figurative works; representing 20+ clay artists.

People's Republic of China

Fuping Pottery Art Village and FuLe International Ceramic Art Museums

Fuping, China; www.facebook.com/Fupingpotteryart
Primarily exhibiting contemporary ceramics.

The Pottery Workshop Shanghai on Shaanxi Lu

Shanghai, China; www.potteryworkshop.com.cn
Primarily exhibiting contemporary functional ceramics; Chinese ceramics, international artists from Japan and the US; representing 20 clay artists.

Republic of Korea

Gallery LVS & LVS Craft

Seoul, South Korea; www.gallerylvs.org
Primarily exhibiting contemporary ceramics; functional, sculptural, figurative, and installation works; modern white porcelain in the Joseon dynasty tradition; representing 10 clay artists.

Gwangju Gonjam Ceramic Park

Gwangju-si, Gyeonggi-do Province
Primarily exhibiting contemporary ceramics

Icheon Cerapia Museum

Icheon-si, Gyeonggi-do Province; kocef.or.kr/eng/02_museum/07.asp
Primarily exhibiting historical and contemporary ceramics.

Yeoju Dojasesang

Yeoju-gun, Gyeonggi-do Province
Primarily exhibiting contemporary ceramics.

Scotland

The Strathearn Gallery

Crieff, Scotland; www.strathearn-gallery.com
Primarily exhibiting contemporary ceramics; sculptural, functional, and figurative works; contemporary ceramics made in the UK; representing 25 clay artists.

National Museum of Scotland

Edinburgh, Scotland; www.nms.ac.uk
Primarily exhibiting historical and contemporary ceramics.

Continued on page 80.

Opening Oct. 13th

SARAH PIKE

Solo Exhibition

Good earth Pottery

Est. 1969



A Contemporary Ceramics Gallery

Juried Show Opportunities ~ Local Artists ~ International Artists

Annual
**WINTER
WARMERS**
Cup Show



**CALL
FOR
ENTRIES**



Apply by
10/15/23



Bellingham, Washington
www.goodearthpots.com



Scotland (continued)

Stockbridge Ceramics

Edinburgh, Scotland; www.stockbridgeceramics.com
Primarily exhibiting contemporary ceramics; functional and non-functional works; representing 6 clay artists.

The Scottish Gallery

Edinburgh, Scotland; scottish-gallery.co.uk
Primarily exhibiting contemporary ceramics; functional, sculptural, figurative, installation, decorative, and domestic ware; European, Japanese, and Australian artists; representing 20+ clay artists.

Jardine Gallery and Workshop

Perth, Scotland; www.julianjardine.co.uk
Primarily exhibiting contemporary ceramics; specializes in animals, nature, and natural forms; ceramic sculpture plus functional and still life work; representing 5+ clay artists.

Fife Contemporary Art & Craft

St. Andrews, Scotland; www.fcac.co.uk
Primarily exhibiting contemporary ceramics.

South Africa

Burndale Centre and Pottery Gallery

Umhlabi, South Africa
Primarily exhibiting contemporary ceramics; functional and sculptural works; representing 3 clay artists.

Spain

Museo de Cantereria / Museo de Alfarería de Agost

Agost, Alicante; turismodeagost.com/museo-de-la-alfareria
Primarily exhibiting contemporary and historical ceramics; local, traditional pottery; pottery of Agost (Alicante, Spain), functional white clay pottery used mainly for water consumption.

Museo de Ceramica de Manises

Manises, Valencia; museumanises.es
Exhibiting historical and contemporary ceramics, 5000 pieces representing an overview of production in Manises since the 14th century and art by international artists.

Ceramics Museum Ruiz de Luna

Talavera de la Reina, Toledo; www.spain.info/en/places-of-interest/ruiz-luna-ceramics-museum
Museum in a former 17th-century convent displaying Spanish ceramics from the 14th century to the present.

Switzerland

Mairie de Carouge

Carouge, Switzerland; www.carouge.ch
Primarily exhibiting historical and contemporary ceramics; functional works; ceramics from Carouge.

Baur Foundation, Museum of Far Eastern Art

Geneva, Switzerland; www.fondation-baur.ch
Primarily exhibiting historical ceramics; functional works; Chinese ceramics from the Tang (618–907 CE) to the Qing (1644–1911) dynasties, including work from the Song dynasty; representing 20+ clay artists.

Musée Ariana

Geneva, Switzerland; www.musee-ariana.ch
Primarily exhibiting historical and contemporary ceramics; functional, sculptural, figurative, and installation works; representing 200+ clay artists.

Taste Contemporary

Geneva, Switzerland; www.tastecontemporary.com
Primarily exhibiting contemporary ceramics; functional, sculptural, figurative, and installation works.

Kunstforum Solothurn

Solothurn, Switzerland; www.kunstforum.ch
Primarily exhibiting contemporary ceramics; sculptural and figurative works; representing 20 clay artists.

Galerie Fur Gegenwartskunst

Bonstetten, Zürich, Switzerland; ggbohrer.ch
Primarily exhibiting contemporary ceramics; sculptural and figurative works; representing 11 clay artists.

Taiwan

New Taipei City Yingge Ceramics Museum

New Taipei City, Taiwan, R.O.C; academy.ceramics.ntpc.gov.tw
Primarily exhibiting contemporary and historical ceramics; sculptural and functional works.

Turkey

Sibel Sevim Exclusive

Odunpazari, Eskisehir, Turkey; www.sibelsevim.com.tr
Primarily exhibiting contemporary ceramics.

Wales

The Ceramic Gallery at Aberystwyth Arts Centre, School of Art, Aberystwyth University

Aberystwyth, Wales; www.ceramics-aberystwyth.com
Primarily exhibiting contemporary and historical ceramics; functional, sculptural, figurative, and installation works; British and international; studio pottery between 1920–1940 by Bernard Leach, Michael Cardew, Katharine Pleydell-Bouverie, Norah Braden, Charles and Nell Vyse, William Staite Murray, and Reginald Wells; ceramics from Welsh potteries including Buckley, Swansea, and Nantgarw; representing 400 clay artists.

Craft in the Bay, Makers Guild in Wales, The Flourish

Cardiff Bay, Wales; www.makersguildinwales.org.uk
Primarily exhibiting contemporary ceramics; studio pottery, functional, and sculptural works; representing 30 clay artists.

The Potters Gallery (Oriol y Crochenwyr)

Conwy, Wales; thepottersgallery.co.uk
Primarily exhibiting contemporary ceramics; sculptural and functional works; contemporary ceramics and small installations; representing 18 clay artists.

National Museum Cardiff

Cardiff, Wales; museum.wales/cardiff
Primarily exhibiting historical and contemporary ceramics; functional works; European porcelain from the 17th–19th centuries; Welsh pottery and porcelain from Swansea and Nantgarw; contemporary ceramics; representing 100+ clay artists.

Mission Gallery, Gloucester Place

Swansea, Wales; www.missiongallery.co.uk
Primarily exhibiting contemporary ceramics; functional and figurative works.



Fujino Sachiko's *Imagery '22-5 Dark Blooming Form*, 13 $\frac{3}{4}$ in. (34 cm) in height, glazed stoneware, 2022. This sculpture was on view at Joan B Mirviss LTD (www.mirviss.com) in New York, New York, January 20–29, 2023.

Monumental

September 16, 2023 to January 14, 2024



Celebrating our 30th anniversary with works from the Permanent Collection.

Featuring new acquisitions and works not seen in recent years, this exhibition marks this important milestone as we reflect on the Gallery's history and look ahead to the next 30 years.



Monumental is generously supported by The Pioneer Group Inc. and the Hogarth Family Foundation Fund at the Hamilton Community Foundation.

Ann Roberts, *Non Such*, 1993. White earthenware, glaze, oxides, luster. 34 x 13 x 30 cm. Canadian Clay & Glass Gallery Permanent Collection. Gift of Winifred Shantz.

Beyond the Bead



Barry Ace



Sharl Smith

September 23, 2023 to January 7, 2024

Beyond the Bead features the work of Barry Ace and Sharl G. Smith, two contemporary Canadian artists whose practices push one of the oldest forms of craft art, beading, to new and engaging realms.



Shifting Bodies

September 16, 2023 to January 14, 2024

Guest Curated by Reilly Knowles

Julian Miholics presents a contemplation on change and queerness. By intermingling human bodies with those of animals and monsters of legend.

Julian Miholics, *I Remain*, 2023. Cone 5.5 stoneware with underglaze, glaze, and nichrome wire. 33 x 14 x 20 cm. Collection of the artist. Photo courtesy of the artist.



The Musagetes Fund

CANADIAN THE CLAY & GLASS GALLERY Ann Roberts Curatorial Fund



FREE ADMISSION

Gallery Hours

Tuesday to Friday 11 am to 6 pm

Saturday 10 am to 5 pm • Sunday 1 to 5 pm

CANADIAN THE CLAY & GLASS GALLERY

25 Caroline Street North, Waterloo, ON • 519-746-1882

theclayandglass.ca



The Keith and Winifred Shantz Fund for the Arts

