

2026 gallery guide

United States galleries are listed alphabetically by state, district or commonwealth, then cities within the state. International galleries are listed by country, state or province, and city. Contact information has been included to allow you to check current offerings and hours before visiting. To help us make the guide more comprehensive, please send information about exhibition venues via our Gallery Guide submission form (online at www.ceramicsmonthly.org) or via email to editorial@ceramicsmonthly.org.



1 Kadri Pärnamets' "Muraka" (installation view). **2** Kadri Pärnamets' *Muraka: Bog Pool (Laugas in Estonian)*. Muraka at Ferrin Contemporary (ferrincontemporary.com) in Cummington, Massachusetts, September 20–November 15, 2025. **3** Dehmie Dehmlow's wall piece. "Dehmie Dehmlow," at In Tandem Gallery (www.intandemgallery.com) in Bakersville, North Carolina, April 2025. **4** Armando Minjarez's *Totem #1, #2, #3, #4, #5, #6*, stoneware, concrete base. "Transmutación," at Reuben Saunders Gallery (www.reubensaundersgallery.com) in Wichita, Kansas, March 7–29, 2025.

Gallery listings begin on page 52.

FREE ADMISSION
SHOP 108 for locally made art
Tues – Sat - 12 – 5 pm
First Fridays - 6 – 9 pm

108 CONTEMPORARY

Art. Craft. Design.

Subterfuge

CLAYTON KEYES

October 3 – November 22, 2025

"Subterfuge" is a solo exhibition by ceramicist Clayton Keyes that examines environmental legacy and institutional oppression through figurative forms that center human and animal subjects. Drawing focus using gesture, posture, and emotional tension, this exhibition invites the viewer into a space of confrontation and reflection.

Exhibition Opening
Friday, October 3, 2025
from 6:00 - 9:00 pm

Artist Talk with Clayton Keyes
Saturday, October 18, 2025
ASL interpretation provided
1:00 pm

Scan for more
information



108 E. Reconciliation Way, Tulsa OK 74103 | 918.895.6302 | 108contemporary.org

Brady Craft Inc., dba 108|Contemporary, is a non-profit organization under Section 501(c)(3) of the Internal Revenue Code.

Alabama

Red Dot Gallery

Birmingham, AL; www.reddotgallery.com
Primarily exhibiting contemporary ceramics; functional and sculptural works; representing 2 clay artists.

The Kiln Studio and Gallery

Fairhope, AL; www.thekilnstudio.com
Primarily exhibiting contemporary ceramics; functional, sculptural, figurative, and installation works; representing 20 clay artists.

Arizona

Eide Art Gallery 465

Clarkdale, AZ; www.eidefineart.com
Primarily exhibiting contemporary ceramics; sculptural, functional, and figurative works.

Mesa Arts Center/

Mesa Contemporary Arts Museum

Mesa, AZ; www.mesaartscenter.com
Primarily exhibiting contemporary ceramics; functional works.

Eye Lounge Contemporary Arts Space

Phoenix, AZ; www.eyelounge.com
Primarily exhibiting contemporary ceramics; sculptural works; representing 1 clay artist.

King Galleries

Scottsdale, AZ; www.kingalleries.com
Primarily exhibiting historical and contemporary ceramics; sculptural works; Native American ceramic artwork; representing 10 clay artists.

ASU Art Museum Ceramics Research Center

Tempe, AZ; asuartmuseum.asu.edu
Primarily exhibiting historic and contemporary ceramics; functional and sculptural works.

Mudroom Gallery

Tucson, AZ; www.romerohouseceramics.org/mudroomgallery
The Mudroom Gallery is located within the Romero House Ceramics Studio; exhibiting contemporary ceramics.

Sabino Stoneware Pottery

Tucson, AZ; www.sabinopottery.com
Representing 1 clay artist.

Arkansas

The Gallery at Terra Studios

Fayetteville, AR; www.usingart.org
Primarily exhibiting contemporary ceramics; functional and sculptural works; artists living in Arkansas; representing 90 clay artists.

Fort Smith Regional Art Museum

Fort Smith, AR; www.fsrarn.org
Primarily exhibiting contemporary ceramics; 1 permanent exhibit; representing 3 clay artists.

Arkansas Museum of Fine Arts

Little Rock, AR; www.arkmfa.org
Primarily exhibiting contemporary ceramics; functional and figurative works; contemporary crafts; representing 1 clay artist.

California

Soka University, Founders Hall Art Gallery

Aliso Viejo, CA; www.soka.edu/founders-gallery
Primarily exhibiting contemporary ceramics.

Fire Arts Center

Arcata, CA; www.fireartsarcata.com
Primarily exhibiting contemporary ceramics; functional, sculptural, and figurative works; porcelain, stoneware, high-fire and mid-range works; representing 80 clay artists.

Santa Cruz Mountains Art Center

Ben Lomond, CA; www.mountaintartcenter.org
Primarily exhibiting contemporary ceramics; functional, sculptural, figurative, and installation works; representing 15+ clay artists.

TRAX Gallery

Berkeley, CA; www.traxgallery.com
Primarily exhibiting contemporary ceramics; functional works; pots for use with food or decorative for the table; representing 17 clay artists.

Ruth Chandler Williamson Gallery, Scripps College

Claremont, CA; rcwg.scrippscollege.edu
Primarily exhibiting contemporary ceramics; sculptural, functional, and figurative works; mid-century ceramics.

Clay Mix

Fresno, CA; www.clay-mix.com
Primarily exhibiting contemporary ceramics; functional, sculptural, figurative, and installation works.

Scarab Creative Arts

Fresno, CA; www.scarabgallery.com
Primarily exhibiting contemporary ceramics; functional and decorative works; representing 30 clay artists.

A New Leaf Gallery | Sculpturesite

Glen Ellen, CA; www.sculpturesite.com
Primarily exhibiting contemporary ceramics; sculptural and figurative works.

Art Honors Life Projects at FUNERIA

Graton, CA; www.funeria.com
Primarily exhibiting contemporary ceramics; functional, sculptural, figurative, and installation works; funerary urns, vessels, reliquaries, and personal memorial art; representing 15 clay artists.

Craft Contemporary

Los Angeles, CA; www.craftcontemporary.org
Primarily exhibiting contemporary sculptural and installation-based ceramics; representing 2 clay artists.

Craft in America Center

Los Angeles, CA; www.craftinamerica.org/center
Primarily exhibiting contemporary ceramics; functional, sculptural, figurative, and installation works.

Edward Cella Art+Architecture

Los Angeles, CA; www.edwardcella.com
Primarily exhibiting contemporary and historical ceramics; sculptural works; representing 3 clay artists.

Freehand Gallery

Los Angeles, CA; www.freehand.com
Primarily exhibiting contemporary ceramics; functional works; American artists; representing 20+ clay artists.

Mendocino Art Center

Mendocino, CA; www.mendocinoartcenter.org
Primarily exhibiting contemporary ceramics; sculptural and functional works; representing 15 clay artists.

The Main Gallery

Menlo Park, CA; www.themaingallery.org
Primarily exhibiting contemporary ceramics; functional and sculptural works; representing 4 clay artists.

Beatrice Wood Center for the Arts

Ojai, CA; www.beatricewood.com
Primarily exhibiting contemporary and historical ceramics; functional and sculptural works; permanent collection of Beatrice Wood's works.

Silica Studios

Palm Springs, CA; www.silicastudios.com
Primarily exhibiting contemporary ceramics; functional, sculptural, and figurative works; contemporary southern California ceramic artists; representing 20+ clay artists.

Xiem Gallery

Pasadena, CA; www.xiemclaycenter.com
Primarily exhibiting contemporary ceramics; functional, sculptural, and figurative works; established and emerging local artists; representing 50 clay artists.

Mazamar Art Pottery

Pioneertown, CA; www.mazamar.com
Primarily exhibiting contemporary ceramics; sculptural, and figurative works; representing 9 clay artists.

American Museum of Ceramic Art

Pomona, CA; www.amoca.org
Primarily exhibiting historical and contemporary ceramics; functional, sculptural, and production ceramics; representing 1000+ clay artists.

Blue Line Arts

Roseville, CA; www.bluelinearts.org
Primarily exhibiting contemporary ceramics; functional, sculptural, and figurative works; representing 20+ clay artists.

Crocker Art Museum

Sacramento, CA; www.crockerartmuseum.org
Primarily exhibiting historical and contemporary ceramics; functional, sculptural, and figurative works; American studio ceramics since 1945, Funk, contemporary studio practices, and Southwest pottery; international ceramics including British, Danish, German, and Japanese; historic Korean, Goryeo Period, early Meissen porcelain, Asian trade ceramics; representing 800+ clay artists.

Mingei International Museum, Balboa Park

San Diego, CA; www.mingei.org
Primarily exhibiting contemporary and historical ceramics.

San Diego Potters' Guild, Studio 29, Spanish Village, Balboa Park

San Diego, CA; www.sandiegopottersguild.org
Primarily exhibiting contemporary ceramics; functional works; representing 40+ clay artists.

San Diego Sculptors Guild and Gallery

San Diego, CA; www.sandiegosculptorsguild.com
Representing 21 clay artists.

BusaccaGallery.com Art Consignment

San Francisco, CA; www.busaccagallery.com
Representing 100 clay artists.

Catharine Clark Gallery

San Francisco, CA; www.cclarkgallery.com
Primarily exhibiting contemporary ceramics; sculptural and figurative works; representing 1 clay artist.

de Young Museum

San Francisco, CA; www.famsf.org
Primarily exhibiting contemporary and historical ceramics; sculptural and figurative works; post-WWII American studio craft, including ceramics; representing 100 clay artists.

Museum of Craft and Design

San Francisco, CA; sfmcd.org
Primarily exhibiting contemporary ceramics; functional and installation-based works.

Rena Bransten Gallery

San Francisco, CA; www.renabranstengallery.com
Primarily exhibiting contemporary ceramics; installation, figurative, and sculptural works; representing 4 clay artists.

Ruby's Clay Studio and Gallery

San Francisco, CA; www.rubysclaystudio.org
Primarily exhibiting contemporary ceramics; functional and sculptural works; representing 50 clay artists.

Legion of Honor, Fine Arts Museums of San Francisco

San Francisco, CA; www.famsf.org
Primarily exhibiting historical ceramics with a focus on European 18th-century ceramics; functional, sculptural, and figurative works; representing 15 clay artists.

SMAart Gallery & Studio

San Francisco, CA; www.smaartstudio.com
Primarily exhibiting contemporary ceramics; sculptural, figurative, functional, and installation works; representing 20+ clay artists.

Continued on page 54.

The
Clay
Studio

1425 N American Street
Philadelphia, PA 19122

theclaystudio.org
[@theclaystudio.phl](https://www.instagram.com/theclaystudio.phl)

Clay *as* Care

October 9 through December 31

Exploring the connection between ceramic art and wellness, showcasing how creating and experiencing art can foster personal and communal well-being through an exhibition, research, and public programs.

Symposium: October 25
Free, online and in person

Featuring new work from:
Jennifer Ling Datchuk
Adebunmi Gbadebo
Ehren Tool
Maia Chao

California (continued)

LH Horton Jr Gallery, San Joaquin Delta College

Stockton, CA; gallery.deltacollege.edu

Primarily exhibiting contemporary ceramics; functional, sculptural, and figurative works; representing 200+ clay artists.

Trinidad Art Gallery

Trinidad, CA; www.trinidadartgallery.com

Primarily exhibiting contemporary ceramics; functional, sculptural, and figurative works; porcelain and stoneware; representing 4 clay artists.

L.A. Louver

Venice, CA; www.lalouer.com

Primarily exhibiting contemporary ceramics; sculptural works; representing 5 clay artists.

Colorado

Arvada Ceramic Arts Guild and Gallery

Arvada, CO; www.arvadaceramicarts.org

Primarily exhibiting contemporary ceramics; functional and sculptural works; representing 20 clay artists.

The Arvada Center for the Arts & Humanities

Arvada, CO; www.arvadacenter.org

Primarily exhibiting historical and contemporary ceramics.

Harvey Preston Gallery

Aspen, CO; www.harveypreston.com

Primarily exhibiting contemporary ceramics; functional, sculptural, and figurative works; representing 20+ clay artists.

Carbondale Clay Center

Carbondale, CO; www.carbondaleclay.org

Primarily exhibiting contemporary ceramics; functional and sculptural works; representing 60+ clay artists.

Turquoise Raven Art Gallery

Cortez, CO; www.turquoiseravenartgallery.com

Primarily exhibiting functional and sculptural works; representing 1 clay artist.

Art Students League of Denver

Denver, CO; asld.org

Primarily exhibiting contemporary ceramics; functional and sculptural works; representing approximately 40 clay artists.

Artists on Santa Fe Gallery & Studios

Denver, CO; www.artistsonsantafe.com

Primarily exhibiting contemporary ceramics; functional, sculptural, and figurative works; representing 6 clay artists.

Denver Art Museum

Denver, CO; www.denverartmuseum.org

Primarily exhibiting historical ceramics; ancient American, Native American, Asian, and contemporary ceramics.

Plinth Gallery

Denver, CO; www.plinthgallery.com

Primarily exhibiting contemporary ceramics; functional and sculptural works.

The Art Center of Western Colorado

Grand Junction, CO; www.gjartcenter.org

Representing 40–100 clay artists.

Foothills Art Center

Golden, CO; www.foothillsartcenter.org

Primarily exhibiting contemporary ceramics; fine-craft media such as glass, clay, textiles, etc.; representing 30 clay artists.

Commonwheel Artists Co-op

Manitou Springs, CO; www.commonwheel.com

Primarily exhibiting contemporary ceramics; functional works; Colorado artists, mainly Front Range/Southern Colorado; representing 10 clay artists.

Anderson Ranch Arts Center

Snowmass Village, CO; www.andersonranch.org

Primarily exhibiting functional, sculptural, and non-functional works.

Connecticut

Spectrum Art Gallery and Artisan Store

Centerbrook, CT; www.spectrumartgallery.org

Primarily exhibiting contemporary ceramics; functional, sculptural, and figurative works; representing 29 clay artists.

Greenleaf Pottery

East Hampton, CT; www.greenleafstoneware.com

Primarily exhibiting contemporary ceramics; functional works; stoneware pottery; representing 1 clay artist.

Mill Gallery, Guilford Art Center

Guilford, CT; www.guilfordartcenter.org

Primarily exhibiting contemporary ceramics; sculptural, functional, figurative, and installation works; contemporary American craft.

Wesleyan Potters Gallery Shop

Middletown, CT; www.wesleyanpotters.com

Primarily exhibiting contemporary ceramics; functional and sculptural works; representing 50+ clay artists.

Sawmill Pottery

Putnam, CT; www.sawmillpottery.com

Primarily exhibiting contemporary local ceramics; functional and sculptural works; representing 10 clay artists.

District of Columbia

District Clay Gallery

Washington, DC; www.districtclaycenter.com

Primarily exhibiting contemporary ceramics; functional, sculptural, and figurative works; representing 20+ clay artists.

The National Museum of Asian Art | Smithsonian Institution

Washington, DC; www.asia.si.edu

Primarily exhibiting historical ceramics.

Hill Center at the Old Naval Hospital

Washington, DC; hillcenterdc.org

Primarily exhibiting contemporary ceramics; functional works.

National Gallery of Art

Washington, DC; www.nga.gov

Primarily exhibiting historical functional and figurative ceramics; some sculptural works; permanent display of French and Italian Renaissance ceramics and Chinese porcelains circa 1425–1750 CE.

Renwick Gallery of the Smithsonian American Art Museum

Washington, DC; americanart.si.edu/visit/renwick

Representing 330+ clay artists.

Florida

Crossroads Gallery, St. Petersburg College

Clearwater, FL; www.spcollege.edu

Primarily exhibiting contemporary ceramics; sculptural, functional, figurative, and installation works; student exhibition space; representing 20+ student clay artists.

Museum of Art Deland

DeLand, FL; www.moartdeland.org

Primarily exhibiting contemporary ceramics; Florida ceramics.

Charlie Cummings Gallery

Gainesville, FL; www.charliecummingsgallery.com

Primarily exhibiting contemporary ceramics; functional, sculptural, and figurative works; representing 400+ clay artists yearly.

Key West Pottery

Key West, FL; www.keywestpottery.com

Primarily exhibiting contemporary ceramics; functional and sculptural works.

Mindy Solomon Gallery

Miami, FL; www.mindysolomon.com

Primarily exhibiting contemporary ceramics; functional, sculptural, and figurative works; South Korean ceramics; representing 15 clay artists.

Naples Art Studios, North Line Plaza

Naples, FL; naplesart.studio

Primarily exhibiting contemporary ceramics; sculptural works.

Amelia Center Gallery, Gulf Coast State College

Panama City, FL; www.gulfcoast.edu/community-friends/arts-culture/amelia-center-gallery/index.html

Primarily exhibiting contemporary ceramics; functional, sculptural, and figurative works.

Craftsman House Gallery

St. Petersburg, FL; www.craftsmanhousegallery.com

Primarily exhibiting contemporary ceramics; functional and sculptural works.

Florida CraftArt Gallery

St. Petersburg, FL; www.floridacraftart.org

Primarily exhibiting contemporary ceramics; functional, sculptural, figurative, and installation works; Florida artists as well as artists from around the country; representing 50–100 clay artists.

Morean Center for Clay

St. Petersburg, FL; moreanartscenter.org/morean-center-for-clay-location

Primarily exhibiting contemporary ceramics; sculptural, functional, figurative, and installation works; representing 20+ clay artists.

Lighthouse ArtCenter Museum

Tequesta, FL; www.lighthousearts.org

Primarily exhibiting contemporary ceramics; functional, sculptural, figurative works, atmospheric firing; local and regional emerging and established artists; representing 40+ clay artists.

Armory Art Center

West Palm Beach, FL; www.armoryart.org

Primarily exhibiting contemporary ceramics; functional, sculptural, figurative, and installation works; representing 20+ clay artists.

The Craft Gallery

West Palm Beach, FL; thecraftgallery.square.site

Primarily exhibiting contemporary ceramics; sculptural works; representing 15 clay artists.

Georgia

MudFire Studio & Gallery

Decatur, GA; www.mudfire.com

Primarily exhibiting contemporary ceramics; functional works; contemporary studio pottery with a special focus on illustration, color, design, and narrative; representing 15+ clay artists.

The Hudgens Center For Art

Duluth, GA; www.thehudgens.org

Primarily exhibiting contemporary ceramics; functional and sculptural works; representing 15 clay artists.

The Hambidge Center for Creative Arts & Sciences

Rabun Gap, GA; www.hambidge.org

Primarily exhibiting contemporary ceramics; functional and sculptural works.

Art Center West

Roswell, GA; www.roswellclaycollective.com

Primarily exhibiting contemporary ceramics; functional, sculptural, and figurative works.

Continued on page 56.

RED LODGE CLAY CENTER

RESIDENCIES • GALLERY • WORKSHOPS • COMMUNITY • EDUCATION



REDLODGECLAYCENTER.COM

Supporting artists, the creative process and art in everyday life since 2006

Idaho

Stewart Gallery

Boise, ID; www.stewartgallery.com

Primarily exhibiting contemporary ceramics; sculptural works.

The Art Spirit Gallery

Coeur d'Alene, ID; www.theartspiritgallery.com

Primarily exhibiting contemporary ceramics; functional, sculptural, and figurative works.

Illinois

Lillstreet Gallery

Chicago, IL; www.lillstreet.com/shop-and-gallery

Primarily exhibiting contemporary ceramics; functional and sculptural works; representing 40+ clay artists.

The Neveca Project

Chicago, IL; www.thenevicaproject.com

Primarily exhibiting contemporary ceramics; functional, sculptural, and figurative works; collectible ceramics from the US, Japan, and Britain; representing 25 clay artists.

Neil Estrick Gallery, LLC

Grayslake, IL; www.neilestrickgallery.com

Primarily exhibiting contemporary ceramics; functional works.

ClaySpace Ceramic Arts Center

Lisle, IL; www.clayspace.net

Primarily exhibiting contemporary ceramics; functional and sculptural works; representing 55 clay artists.

Terra Incognita Studios and Gallery

Oak Park, IL; www.terraincognitostudios.com

Primarily exhibiting contemporary ceramics; functional works; representing 20+ clay artists.

M.G. Nelson Family Gallery

Springfield, IL; www.springfieldart.org

Primarily exhibiting contemporary ceramics; functional, sculptural, figurative, and installation works; representing 10 clay artists.

The Macoupin Art Collective

Staunton, IL; www.macart.org

Primarily exhibiting contemporary ceramics; functional works; representing 11 clay artists.

Cinema Gallery

Urbana, IL; www.cinemagallery.cc

Primarily exhibiting contemporary ceramics; functional works; Midwestern artists.

Indiana

Overbeck Museum,
Cambridge City Public LibraryCambridge City, IN; ccitypl.org/overbeck-museum

Representing 6 clay artists.

USI New Harmony Gallery
of Contemporary ArtNew Harmony, IN; www.usi.edu/nhgallery

Representing 30–60 clay artists.

Highland Studio and Gallery

South Bend, IN; www.highlandstudioandgallery.com

Primarily exhibiting contemporary ceramics; representing 25+ clay artists.

Iowa

Gilded Pear Gallery

Cedar Rapids, IA; www.gildedpeargallery.com

Primarily exhibiting contemporary ceramics; functional, sculptural, and figurative works; representing 7 clay artists.

Iowa Ceramics Center and Glass Studio

Cedar Rapids, IA; www.iowaceramicscenter.org

Representing 8 clay artists.

Luther College Fine Arts Collection

Decorah, IA; fac.luther.edu

Primarily exhibiting historical ceramics.

ClayAKAR

Iowa City, IA; www.clayakar.com

Primarily exhibiting contemporary ceramics; functional works; representing 150+ artists yearly.

Iowa Artisans Gallery

Iowa City, IA; www.iowaartisansgallery.com

Primarily exhibiting contemporary ceramics; functional works; permanent collection of contemporary American craft; representing 48 clay artists.

University of Iowa Stanley Museum of Art

Iowa City, IA; stanleymuseum.uiowa.edu

Primarily exhibiting historical and contemporary ceramics; functional, sculptural, and figurative works; contemporary American and European ceramics; representing 20+ clay artists.

Le Mars Arts Center

Le Mars, IA; www.lemarsarts.com

Primarily exhibiting contemporary ceramics; regional artists; representing 1–10 ceramic artists.

Kansas

Lawrence Arts Center

Lawrence, KS; www.lawrenceartscenter.org

Primarily exhibiting contemporary ceramics; functional, sculptural, and figurative works

SNW Gallery and Custom Frames

Manhattan, KS; www.snwgallery.com

Primarily exhibiting contemporary and historical ceramics; functional and figurative works; artists from Kansas and surrounding states; representing 15 clay artists.

Alice C. Sabatini Gallery

Topeka, KS; www.tscpl.org/gallery

Primarily exhibiting contemporary ceramics; functional and sculptural works; representing 20+ clay artists.

Mulvane Art Museum

Topeka, KS; www.mulvaneartmuseum.org

Primarily exhibiting contemporary sculptural and figurative ceramics; a modest collection of historical works; representing 15–20 clay artists.

Wichita Pottery

Wichita, KS; www.wichitapottery.com

Primarily exhibiting contemporary ceramics; functional, sculptural, and figurative works; US artists; representing 4 clay artists.

Reuben Saunders Gallery

Wichita, KS; www.reubensaundersgallery.com

Primarily exhibiting contemporary ceramics; functional and sculptural works; representing 9 clay artists.

Kentucky

Kentucky Artisan Center at Berea

Berea, KY; www.kentuckyartisancenter.ky.gov

Primarily exhibiting contemporary ceramics; functional, sculptural, and figurative works; representing 85 clay artists.

AA Clay Studio and Gallery

Louisville, KY; www.alexadamsclaywork.com

Primarily exhibiting contemporary regional ceramics; functional and sculptural works; representing 12 clay artists.

Asia Institute/Crane House

Louisville, KY; crane-house.org

Primarily exhibiting contemporary ceramics; sculptural, figurative, and installation works; representing 7 clay artists.

Kentucky Museum of Art and Craft

Louisville, KY; www.kmacmuseum.org

Primarily exhibiting contemporary ceramics; representing 20 clay artists.

Louisiana

Sans Souci Fine Crafts Gallery,
Louisiana Crafts GuildLafayette, LA; www.louisianacrafts.org

Primarily exhibiting contemporary and historical ceramics; representing 15–20 clay artists.

Carol Robinson Gallery

New Orleans, LA; www.carolrobinsongallery.net

Primarily exhibiting contemporary figurative and functional ceramics.

Ferrara Showman Gallery

New Orleans, LA 70130; ferrarashowman.com

Representing 6 clay artists.



Front to back: Giselle Hicks' vessels, Sarah Heitmeyer's wall tiles. "Meditations," at Radius Gallery (radiusgallery.com) in Missoula, Montana, January 17–February 22, 2025.

Continued on page 58.



51st Annual OLD CHURCH POTTERY SHOW

the road to Demarest

Curated by
Chris Gustin,
Bruce Dehnert,
& Aysha Peltz



Shikha Joshi

Jen Allen - WV • Yael Braha - VA • Paul Briggs - NY • Ray Brown - MS • Pattie Chalmers - IL • Autumn Cipala - ME
Bruce Dehnert - NY • Daniel Garver - NC • Tyler Gulden - ME • Chris Gustin - MA • Shikha Joshi - TX
Yeonsoo Kim - NH • David MacDonald - NY • Matthew Metz - NY • Ernest Miller - MN • SangJoon Park - NY
Aysha Peltz - VT • Kari Radasch - ME • Ellen Shankin - VA • Mark Shapiro - MA • Malcolm Mobutu Smith - IN
Kevin Snipes - PA • David Swenson - MN • Megan Thomas - FL • Sue Tirrell - MT • Jack Troy - PA • Catherine White - VA



oldchurchpotteryshow.org
@oldchurchpotteryshow
#theroadtodemarest

561 Piermont Rd
Demarest, NJ 07627
201-767-7160

DECEMBER 5-7, 2025

FRIDAY, 6 PM - 9 PM

SATURDAY, 10 AM - 5 PM

SUNDAY, 11 AM - 4 PM



Featuring thousands of handmade, one-of-a-kind pieces by 27 distinguished potters. Proceeds benefiting The Art School at Old Church, a 501 (c)3 non-profit center for the arts.

Louisiana (continued)

New Orleans Museum of Art

New Orleans, LA; www.noma.org

Primarily exhibiting contemporary and historical ceramics; sculptural, functional, and figurative works; permanent collection, Meissen porcelain, French ceramics (1600–1950), American Art pottery (1880–1960), Japanese and Chinese ceramics (3000 BCE–1900 CE); more than 40 clay artists/manufacturers currently on view.

Newcomb Art Museum at Tulane University, Woldenberg Art Center

New Orleans, LA; newcombartmuseum.tulane.edu

Primarily exhibiting rotating contemporary exhibitions with permanent display of Newcomb Pottery ceramics; functional works.

Clay Center of New Orleans

New Orleans, LA; www.nolaclay.org

Primarily exhibiting contemporary figurative and functional ceramics; representing 200+ clay artists.

Ogden Museum of Southern Art

New Orleans, LA; www.ogdenmuseum.org

Primarily exhibiting sculptural and functional ceramics; art of the American South; representing 10 clay artists.

Maine

Dowstudio Gallery

Deer Isle, ME; dowstudiodeerisle.com

Primarily exhibiting contemporary ceramics; functional and sculptural works; established and emerging studio potters and artists from across the US; representing 35 clay artists.

Maine Potters Market

Portland, ME; www.maine-potters-market.com

Primarily exhibiting contemporary ceramics; functional works; representing 14 clay artists.

Richard Boyd Art Gallery

Portland, ME; www.richardboydpottery.com

Primarily exhibiting contemporary ceramics; functional works.

Maryland

Baltimore Clayworks

Baltimore, MD; www.baltimoreclayworks.org

Primarily exhibiting contemporary ceramics; functional, figurative, and sculptural works, including installations; representing 20+ clay artists.

The Potters Guild of Baltimore

Baltimore, MD; www.pottersguild.org

Primarily exhibiting contemporary ceramics; functional, sculptural, and figurative works; representing 20+ clay artists.

Waverly Street Gallery

Bethesda, MD; www.waverlystreetgallery.com

Primarily exhibiting contemporary ceramics; functional and sculptural works; representing 3 clay artists.

The ClayGround Studio & Gallery

Ellicott City, MD; www.claygroundonline.com

Representing 15 clay artists.

Hodson and Whitaker Galleries

Frederick, MD; www.hood.edu/academics/

departments/departments-art-archaeology/art-galleries
Primarily exhibiting contemporary ceramics; functional, sculptural, figurative, and installation works; representing 20 clay artists.

Massachusetts

Gallery 224

Allston, MA; ofa.fas.harvard.edu/ceramics

Primarily exhibiting contemporary ceramics; functional, sculptural, figurative, and installation works; emerging and established artists; representing 20+ clay artists.

Ellen Miller Gallery

Boston, MA; www.ellenmillergallery.com

Primarily exhibiting contemporary ceramics; sculptural, figurative, and installation works; representing 3 clay artists.

LaiSun Keane Gallery

Boston, MA; www.laisunkeane.com

Primarily exhibiting contemporary sculptural and functional ceramics.

Museum of Fine Arts

Boston, MA; www.mfa.org

Primarily exhibiting historical and contemporary ceramics; functional, sculptural, figurative, and installation works; representing 20+ clay artists.

Pucker Gallery

Boston, MA; www.puckergallery.com

Primarily exhibiting contemporary ceramics; functional and sculptural works; representing Brother Thomas Bezanson, Fance Franck, Yoshinori Hagiwara, Shinsaku Hamada, Shoji Hamada, Tomoo Hamada, Li Hongwei, Randy Johnston, Hisaaki Kamei, Miraku Kamei XV, Jan Kollwitz, Ipek Kotan, Young Jae Lee, Ken Matsuzaki, Hideaki Miyamura, Tatsuzo Shimaoka, Onda Yaki, Makoto Yabe, Zulu and Lozi artists.

Society of Arts and Crafts

Boston, MA; www.societyofcrafts.org

Primarily exhibiting contemporary ceramics; functional, sculptural, and figurative works; American contemporary craft; representing 20+ clay artists.

Fuller Craft Museum

Brockton, MA; www.fullercraft.org

Primarily exhibiting contemporary and craft ceramics; sculptural, functional, figurative, or installation works from 1950 to the present; representing 200+ clay artists in the permanent collection, approximately 20 in annual exhibitions.

Mobilia Gallery

Cambridge, MA; www.mobilia-gallery.com

Primarily exhibiting contemporary ceramics; sculptural and installation works; representing 8 clay artists.

Mudflat Gallery

Cambridge, MA; www.mudflat.org/mudflat-gallery

Primarily exhibiting contemporary ceramics; functional and sculptural works; representing 45 clay artists.

Lucy Lacoste Gallery

Concord, MA; www.lucylacoste.com

Primarily exhibiting contemporary ceramics; sculptural, functional, and figurative works; representing 20+ clay artists.

Umbrella Arts Center

Concord, MA; www.theumbrellaarts.org

Exhibiting contemporary ceramics.

Ferrin Contemporary

North Adams, MA; ferrincontemporary.com

Primarily exhibiting historical and contemporary ceramics; sculptural, figurative, and installation works; ceramic art circa 1950–present; representing 15 clay artists.

Pinch

Northampton, MA; www.pinchgoods.com

Primarily exhibiting contemporary ceramics; functional works; representing 30 clay artists.

Mudflat Pottery School and Studios

Somerville, MA; www.mudflat.org

Primarily exhibiting contemporary ceramics; functional and sculptural works; representing 45 clay artists.

Kulina Folk Art & Pied Potter Hamelin Redware Pottery

Warren, MA; www.americanredware.com

Representing 2 clay artists.

Clever Hand Gallery

Wellesley, MA; www.cleverhandgallery.com

Primarily exhibiting contemporary ceramics; functional works; representing 6 clay artists.

The Krikorian Gallery & Gallery Store

Worcester, MA; www.worcestercraftcenter.org

Primarily exhibiting contemporary ceramics; functional work, figurative work, installation, and sculpture; almost all gallery shows and the work shown in the gallery are American artists; representing 100 clay artists.

Michigan

International Museum of Dinnerware Design

Ann Arbor, MI; www.dinnerwaremuseum.org

Primarily exhibiting historical and contemporary ceramics; collection features mostly functional work; some fine art including sculpture, photography, etc., that references dining and dinnerware.

Stephenson Ceramics

Ann Arbor, MI; www.stephensonceramicstudio.com

Primarily exhibiting sculptural ceramics works; representing 2 clay artists.

Yourist Studio and Gallery

Ann Arbor, MI; www.youristpottery.com

Primarily exhibiting contemporary ceramics; functional and sculptural works; representing 20+ clay artists.

Schaller Gallery

Baroda, MI; www.schallergallery.com

Primarily exhibiting contemporary ceramics; functional works; representing 100+ clay artists.

Cranbrook Art Museum

Bloomfield Hills, MI; www.cranbrookartmuseum.org

Primarily exhibiting contemporary ceramics.

Pewabic Pottery

Detroit, MI; www.pewabic.org

Primarily exhibiting historical and contemporary Pewabic pots; exhibitions change on a regular basis and include mostly sculptural and functional art, with occasional installation pieces; representing 200+ clay artists.

Khnemu Studio on Fernwood Farm

Fennville, MI; www.khnemustudio.com

Primarily exhibiting contemporary ceramics; functional, sculptural, and figurative works; representing 20+ clay artists.

Buckham Gallery

Flint, MI; www.buckhamgallery.org

Primarily exhibiting contemporary ceramics; sculptural and functional works; representing 5 clay artists.

Minnesota

Tweed Museum of Art

Duluth, MN; sfa.d.umn.edu/tweed

Primarily exhibiting historical and contemporary ceramics; sculptural, functional, and figurative works; studio ceramics from around the world.

Fired Up Studios

Golden Valley, MN; www.firedupstudios.com

Primarily exhibiting contemporary ceramics; functional works; representing 40 clay artists.

Clay Coyote Pottery & Gallery

Hutchinson, MN; www.claycoyote.com

Primarily exhibiting contemporary ceramics; functional works; on-site emerging artist pottery studio focused on cone-10 reduction stoneware; representing 25 clay artists.

Clay Squared to Infinity

Minneapolis, MN; www.claysquared.com

Primarily exhibiting contemporary ceramics; functional and sculptural works; representing 20+ clay artists.

Continued on page 60.

Pottery on the Hill

November 14-16, 2025

Ticketed Preview Reception:
Friday, Nov. 14, 2025

Free Show & Sale:
Saturday-Sunday, Nov. 15-16, 2025

Special Features:
Raku Firing & Potter Demonstrations

Reserve your tickets at PotteryontheHillDC.org



DOUG PELTZMAN



CATHERINE WHITE



LARRY ALLEN LEEDS



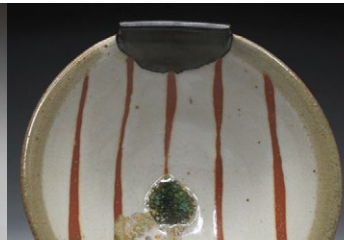
DAN FINNEGAN



MICHAEL KLINE



DONNA POLSENO



MATTHEW HYLECK



MATT KELLEHER



SHOKO TERUYAMA



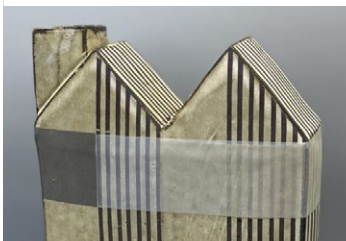
MICHAEL HUNT



NAOMI DALGLISH



MARK SHAPIRO



STACY SNYDER



MATTHEW METZ



SAM TAYLOR



CAMI ASCHER



JUNKO YOUNG



DAVID YOUNG



WARREN FREDERICK



HILL CENTER

at the OLD NAVAL HOSPITAL

921 Pennsylvania Avenue SE

Washington, DC 20003

PotteryontheHillDC.org



Visit Pottery on the Hill and these other world-renowned museums featuring ceramics collections: National Museum of African Art, National Museum of American History, Natural History Museum, Freer|Sackler.

Minnesota (continued)

Northern Clay Center

Minneapolis, MN; www.northernclaycenter.org
Primarily exhibiting historical and contemporary ceramics; functional, sculptural, figurative, and installation works; representing 100 clay artists.

Perlman Teaching Museum

Northfield, MN; apps.carleton.edu/museum
Primarily exhibiting contemporary and historical ceramics; functional and sculptural works; mixed collection with some ceramics, varied exhibition program; representing 1 clay artist.

Rochester Art Center

Rochester, MN; www.rochesterartcenter.org
Primarily exhibiting contemporary ceramics; multi-media exhibitions.

The Grand Hand Gallery

St. Paul, MN; www.thegrandhand.com
Primarily exhibiting contemporary ceramics; functional works; Asian-influenced, American-made ceramics; representing 20 clay artists.

Mississippi

Ohr-O'Keefe Museum of Art

Biloxi, MS; www.georgeohr.org
Primarily exhibiting historical and contemporary ceramics.

Conner Burns Studio and Gallery

Natchez, MS; www.connerburns.com
Primarily exhibiting contemporary ceramics; functional, sculptural, figurative, and installation works; North American ceramics; representing 2 clay artists.

Missouri

Belger Arts Center

Kansas City, MO; www.belgerarts.org
Exhibiting works from the Belger Collection by established and emerging contemporary artists working in all mediums.

Belger Crane Yard Gallery

Kansas City, MO; www.belgerarts.org
Exhibiting 3D works by established and emerging contemporary artists in a variety of mediums with a focus on ceramics and glass.

Centered Earth Gallery @ KC Clay Guild

Kansas City, MO; www.kcclayguild.org/gallery
Primarily exhibiting contemporary ceramics; functional, sculptural, and figurative works; representing 15 clay artists.

Sherry Leedy Contemporary Art

Kansas City, MO; www.sherryleedy.com
Primarily exhibiting contemporary American ceramics; sculptural works; representing 15 clay artists.

Daum Museum of Contemporary Art

Sedalia, MO; www.daummuseum.org
Primarily exhibiting contemporary ceramics.

Craft Alliance Center of Art + Design

St. Louis, MO; www.craftalliance.org
Primarily exhibiting contemporary ceramics; sculptural, functional, figurative, and some installation works; representing 40 clay artists.

Duane Reed Gallery

St. Louis, MO; www.duanereedgallery.com
Primarily exhibiting contemporary ceramics; sculptural works; focus on technical proficiency and biomorphic or organic abstract forms; representing 20+ clay artists.

Montana

Archie Bray Foundation for the Ceramic Arts

Helena, MT; www.archiebray.org
Primarily exhibiting historical and contemporary ceramics; functional, sculptural, figurative, and installation works; representing 20+ clay artists.

Holter Museum of Art

Helena, MT; www.holtermuseum.org
Primarily exhibiting contemporary ceramics; representing 20 clay artists.

The Clay Studio of Missoula

Missoula, MT; www.theclaystudioofmissoula.org
Primarily exhibiting contemporary ceramics; functional, sculptural, and figurative works; representing 30 clay artists.

Red Lodge Clay Center

Red Lodge, MT; www.redlodgeclaycenter.com
Primarily exhibiting contemporary ceramics; functional and sculptural works; representing 120 clay artists.

Whitefish Pottery and Stillwater Gallery

Whitefish, MT; www.whitefishpottery.com
Primarily exhibiting contemporary ceramics; functional and sculptural works; contemporary Montana-based artists; representing 30+ clay artists.

Nebraska

Cooper Studio & Gallery

Ashland, NE; www.facebook.com/Cooper-Studio-Gallery-714582738687819
Primarily exhibiting contemporary ceramics; functional and sculptural works; representing 3 clay artists.

LUX Center for the Arts

Lincoln, NE; www.luxcenter.org
Primarily exhibiting contemporary ceramics; functional works; representing 50+ clay artists.

Nevada

Oats Park Art Center

Fallon, NV; www.churchillarts.org
Primarily exhibiting contemporary ceramics.

Clay Arts Vegas

Las Vegas, NV; www.clayartsvegas.com
Primarily exhibiting contemporary ceramics; functional, sculptural, figurative, and installation works; representing 12 clay artists.

New Jersey

Romano Gallery at Blair Academy

Blairtown, NJ; blair.edu/the-arts/romano-gallery
Primarily exhibiting contemporary ceramics.

Mikhail Zakin Gallery at The Art School at Old Church

Demarest, NJ; www.tasoc.org
Primarily exhibiting contemporary ceramics; functional and sculptural works; representing 40+ clay artists.

m.t. burton gallery

Surf City, NJ; www.mtburtongallery.com
Primarily exhibiting contemporary ceramics; functional, sculptural, figurative, and installation works; representing 20+ clay artists.

Trenton City Museum

Trenton, NJ; www.ellarslie.org
Primarily exhibiting historical and contemporary ceramics; functional and figurative works; ceramics by pottery companies such as Trenton Belleek, Lenox, Boehm, Maddock, Mercer, Ott and Brewer, Willets, Scammell, and Stangl.

Continued on page 62.



Mara Superior's *Only One Planet Earth*, 16 in. (40.6 cm) in height, high-fired English porcelain, ceramic oxides, underglazes, Cornwall Stone glaze, gold leaf, 2019. Courtesy of Mara Superior and Ferrin Contemporary. Photo: John Polak Photography. "Porcelain Love Letters: The Art of Mara Superior," at Shelburne Museum (shelburnemuseum.org) in Shelburne, Vermont, May 10–October 26, 2025.

4TH ANNUAL JURIED EXHIBITION EARTH & FIRE

WHEELING, WEST VIRGINIA
FEBRUARY 28 - APRIL 11, 2026

Visit Wheeling, WV February 26-March 1 for four days and three nights of amazing ceramics events! Attend workshops, sit in on artist demos and talks, explore the city through nine art openings, and end your trip with our Pottery Throwdown. Visit our unique local restaurants and taverns, and fall in love with Oglebay Park and the historic charm of Wheeling.

EARTH & FIRE

Earth & Fire is a national juried ceramic exhibition offering **\$7,000 in total cash prizes. Top prize is \$4,000, a solo exhibition, and paid workshop opportunity in 2027.**

February 28 – April 11, 2026
Stifel Fine Arts Center

Jurors
Holly Goring & Margaret Kinkeade
Ceramics Monthly Magazine

Apply at [CallForEntry.org](https://www.callforentry.org)

**DEADLINE TO ENTER: DECEMBER 14, 2025
11:59PM MTN TIME**

EXHIBITION OPENINGS

CERAMICS MONTHLY MAGAZINE

February 27, 2026
The Gallery at Towngate

RUTH DOUZINAS

February 27, 2026
The Gallery at 2265

GUEST ARTISTS AT

Artworks Around Town
Wheeling Artisan Center
West Liberty University
Clientele Art Studio
Wilson Lodge

And More...

INTERCOLLEGIATE CERAMICS

This juried intercollegiate ceramics exhibition is offering **\$3,000 in total cash prizes. Top Prize is \$2,000.**

February 26 - April 11, 2026
Phillips Lounge, Bethany College

Juror
Ruth Douzinas
Best in Show, Earth & Fire 2025

Apply at [CallForEntry.org](https://www.callforentry.org)

**DEADLINE TO ENTER: DECEMBER 14, 2025
11:59PM MTN TIME**



WORKSHOPS, DEMOS & TALKS BY:

RUTH DOUZINAS

MARGARET KINKEADE

JILLIAN HEUSOHN

HOLLY GORING & KATIE REAVER

AND OTHERS...

EXCITING EVENTS:

KEYSTONE KILN COMPETITION

POTTERY THROWDOWN

AND MORE...

Please check website for more details.

CERAMICS TAKE OVER WHEELING

is a citywide event celebrating ceramic artists and enthusiasts alike. Galleries and venues across the "Friendly City" are excited to showcase the very best in contemporary ceramic art during this newly organized four-day experience.

Special lodging packages are available at Wilson Lodge in world-class Oglebay Park. Enjoy beautiful accommodations, breakfast each day, admission to all artist demonstrations, talks, and our exciting Pottery Throwdown competition, as well as an exclusive meet-and-greet party.

FOR MORE INFORMATION AND
AN INDEPTH SCHEDULE VISIT:
[CERAMICSTAKEOVERWHEELING.COM](https://www.ceramicstakeoverwheeling.com)



4 DAYS, 3 NIGHTS,
9 RECEPTIONS, 4 DEMOS,
ARTIST TALK, MEET & GREET, AND LIVE EVENTS

New Mexico

Rift Gallery

Dixon, NM; www.riftgallery.com

Primarily exhibiting contemporary ceramics; functional, sculptural, figurative, and installation works.

Bellas Artes

Santa Fe, NM; www.bellasartestgallery.com

Primarily exhibiting contemporary ceramics.

Blue Rain Gallery

Santa Fe, NM; www.blueraingallery.com

Primarily exhibiting contemporary ceramics; sculptural and figurative works; Native American art and contemporary non-Native Southwest art.

King Galleries Santa Fe

Santa Fe, NM; www.kinggalleries.com

Representing 10 clay artists.

Paseo Pottery

Santa Fe, NM; www.paseopottery.com

Primarily exhibiting contemporary ceramics; functional and sculptural works; representing 20 clay artists.

Patina Gallery

Santa Fe, NM; www.patina-gallery.com

Primarily exhibiting contemporary ceramics; sculptural vessels; representing 3 clay artists.

New York

Alfred Ceramic Art Museum at Alfred University

Alfred, NY; ceramicsmuseum.alfred.edu

Primarily exhibiting contemporary and historical ceramics.

Gandee Gallery

Fabius, NY; www.gandeegallery.com

Primarily exhibiting contemporary ceramics; functional and sculptural works; representing 25–30 clay artists.

Sculpture Space NYC

Long Island City, NY; www.sculpturespacenyc.com

Primarily exhibiting contemporary ceramics; sculptural and functional works.

Barry Friedman Ltd.

New York, NY; www.barryfriedmanltd.com

Primarily exhibiting contemporary ceramics; functional, sculptural, and figurative works.

Carter Burden Gallery

New York, NY; www.carterburdengallery.org

Primarily exhibiting contemporary ceramics; functional, sculptural, and figurative works; representing 10 clay artists.

Claire Oliver Gallery

New York, NY; www.claireoliver.com

Primarily exhibiting contemporary ceramics; sculptural works; representing 1 clay artist.

Cocobolo Gallery

New York, NY; www.cocobolodesign.com

Primarily exhibiting contemporary American ceramics; sculptural, functional, decorative, and architectural works; representing 9 clay artists.

Dai Ichi Arts, Ltd.

New York, NY; www.daiichiarts.com

Primarily exhibiting contemporary ceramics; Japanese and Chinese ceramics from the 20th and 21st centuries.

Ippodo Gallery New York

New York, NY; www.ippodogallery.com

Primarily exhibiting contemporary ceramics.

Jane Hartsook Gallery at Greenwich House Pottery

New York, NY; www.greenwichhouse.org

Primarily exhibiting contemporary ceramics; functional, sculptural, figurative, and installation works.

Joan B. Mirviss Ltd.

New York, NY; www.mirviss.com

Primarily exhibiting historical and contemporary ceramics; functional and sculptural works; multimedia works and modern and contemporary ceramics; representing 20+ clay artists.

Mugi Studio

New York, NY; www.mugipottery.com

Primarily exhibiting contemporary ceramics; functional works; representing 15 clay artists.

Nancy Margolis Gallery

New York, NY; www.nancymargolisgallery.com

Primarily exhibiting contemporary ceramics; American, Asian, and European artists.

Sara Japanese Pottery

New York, NY; www.saranyc.com

Primarily exhibiting contemporary ceramics from Japan. Representing 25 clay artists.

Hudson Valley Center for Contemporary Art

Peekskill, NY; www.hudsonvalleymoca.org

Primarily exhibiting contemporary ceramics; installation works; representing 4 clay artists.

The shop and gallery at Clay Art Center (CAC)

Port Chester, NY; www.clayartcenter.org

Primarily exhibiting contemporary ceramics; functional, sculptural, figurative, and installation works; one-of-a-kind functional and decorative ceramics by CAC artists and guest artists; representing 68 clay artists.

Flower City Arts Center

Rochester, NY; www.flowercityarts.org

Primarily exhibiting contemporary ceramics; functional, sculptural, and figurative works; representing 25–30 clay artists.

Saratoga Clay Arts Center

Schuylerville, NY; www.saratogaclayarts.org

Representing 50+ clay artists.

Everson Museum of Art

Syracuse, NY; www.everson.org

Primarily exhibiting contemporary functional and sculptural works; representing 1500 clay artists.

Rockland Center for the Arts

West Nyack, NY; www.rocklandartcenter.org

Representing 63 clay artists.

Portage Hill Art Gallery

Westfield, NY; www.portagehillgallery.com

Primarily exhibiting contemporary ceramics; functional, sculptural, and figurative works; representing 2 clay artists.

North Carolina

Blue Spiral 1 Gallery

Asheville, NC; www.bluespiral1.com

Primarily exhibiting contemporary ceramics; functional, sculptural, figurative, and installation works; representing 30 clay artists.

Odyssey Gallery of Ceramic Arts

Asheville, NC; www.odysseygalleryofceramicarts.com

Primarily exhibiting functional, sculptural, figurative work by a collective of 23 ceramic artists.

Odyssey Clayworks

Asheville, NC; www.odysseyclayworks.com

Primarily exhibiting contemporary ceramics; functional, sculptural, figurative, and installation works; representing 15 clay artists.

Penland School of Craft Galleries

Asheville, NC; www.penland.org

Primarily exhibiting contemporary, functional ceramics, works; representing 32 clay artists.

In Tandem Gallery

Bakersville, NC; www.intandemgallery.com

Representing 120 clay artists.

FRANK Gallery

Carrboro, NC; www.frankisart.com

Primarily exhibiting contemporary ceramics; functional, sculptural, and figurative works; artists from the North Carolina Triangle region; representing 20 clay artists.

Lark & Key Gallery

Charlotte, NC; www.larkandkey.com

Primarily exhibiting contemporary ceramics; functional and sculptural works; featuring local and regional North Carolina potters; representing 15 clay artists.

Mint Museum of Art

Charlotte, NC; www.mintmuseum.org

Primarily exhibiting historical and contemporary ceramics; functional, sculptural, figurative, and installation works; historical decorative arts; contemporary craft and design; North Carolina pottery; representing 20+ clay artists.

Pocosin Arts School of Fine Craft

Columbia, NC; www.pocosinarts.org

Primarily exhibiting contemporary ceramics; functional and sculptural works; representing 50 clay artists.

Cedar Creek Gallery

Creedmoor, NC; www.cedarcreekgallery.com

Primarily exhibiting contemporary and historical ceramics; functional, sculptural, and figurative works; ceramics made by on-site potters, local, North Carolina, and national craftspeople; representing 250 clay artists.

Claymakers

Durham, NC; www.claymakers.org

Primarily exhibiting contemporary ceramics; functional and sculptural works; representing 65+ clay artists.

The Bascom, A Center for the Visual Arts

Highlands, NC; www.thebascom.org

Representing 50 clay artists.

Hillsborough Arts Council Gallery and Gift Shop

Hillsborough, NC; hillsboroughartscouncil.org/giftshop

Primarily exhibiting contemporary ceramics; functional works and clay jewelry; range of styles in porcelain and stoneware; representing 8 clay artists.

Gregg Museum of Art and Design

Raleigh, NC; gregg.arts.ncsu.edu

Primarily exhibiting contemporary and historical ceramics; functional works; North Carolina and regional ceramics; representing 150+ clay artists.

North Carolina Pottery Center

Seagrove, NC; www.ncpotterycenter.org

Primarily exhibiting contemporary and historical ceramics; North Carolina and Native American pottery; representing 50 clay artists.

Toe River Arts

Spruce Pine, NC; www.toeriverarts.org

Primarily exhibiting contemporary ceramics; functional, sculptural, and figurative works; representing 20+ clay artists.

Piedmont Craftsmen

Winston-Salem, NC; www.piedmontcraftsmen.org

Primarily exhibiting contemporary ceramics.

Ohio

The Dairy Barn Arts Center

Athens, OH; www.dairybarn.org

Primarily exhibiting contemporary ceramics; representing 20+ clay artists.

Continued on page 64.



IN TANDEM

GALLERY



Wesley Brown



Heather Lepp



Dehmie Dehmlow

PROUD TO REPRESENT
A WIDE RANGE OF STYLES,
TECHNIQUES, AND TASTES
BY INCREDIBLY TALENTED
& NATIONALLY KNOWN
CERAMICISTS.

20 North Mitchell Ave, Bakersville, NC 28705
Gallery Ph: (828) 688-6428 • Cell Ph: (607) 345-5461
intandemgallery@gmail.com

WWW.INTANDEMGALLERY.COM



Ohio (continued)

Baldwin Wallace University's Fawick Art Gallery

Berea, OH; www.fawickgallery.com
Primarily exhibiting contemporary ceramics.

Canton Museum of Art

Canton, OH; www.cantonart.org
Primarily exhibiting contemporary ceramics; American functional and sculptural works; permanent collection of 150 clay artists.

Cincinnati Art Museum

Cincinnati, OH; www.cincinnatiartmuseum.org
Primarily exhibiting historical and contemporary ceramics; functional works.

Ohio Craft Museum

Columbus, OH; www.ohiocraft.org
Primarily exhibiting historical and contemporary ceramics; sculptural, functional, figurative, and installation works.

The Museum Of Ceramics

East Liverpool, OH; www.themuseumofceramics.com
Primarily exhibiting historical and contemporary ceramics; functional and figurative works.

The Little Gallery at BGSU Firelands

Huron, OH; bgsu.edu/firelands/arts/the-little-gallery
Primarily exhibiting contemporary ceramics.

Rosewood Gallery, Rosewood Arts Centre

Kettering, OH; www.playkettering.org/gallery
Primarily exhibiting contemporary ceramics and other media; 1–2 solo ceramic exhibitions including a yearly ceramic artist in residence, group exhibitions include 30 ceramic artists.

Mason Gallery of Craft + Fine Art

Norwood, OH; www.masonhandmade.com
Primarily exhibiting contemporary ceramics; local makers, functional ceramics, emerging artists; representing 15–20 clay artists at any given time.

Queen City Clay

Norwood, OH; www.queencityclay.com/retail/gallery
Primarily exhibiting contemporary ceramics; sculptural, functional, and atmospheric ceramics.

Cowan Pottery Museum at Rocky River Public Library

Rocky River, OH; www.rrpl.org
Primarily exhibiting historical ceramics; functional, sculptural, figurative, and installation works.

River Gallery

Rocky River, OH; rivergalleryarts.com
Primarily exhibiting contemporary ceramics; functional and sculptural works; featuring Ohio artists and artists with an Ohio connection; representing 20+ clay artists.

Frank Museum of Art/Miller Gallery/Fisher Gallery

Westerville, OH; otterbein.edu/art/art-exhibit-schedule
Primarily exhibiting contemporary ceramics.

Zanesville Museum of Art

Zanesville, OH; www.zanesvilleart.org
Primarily exhibiting historical and contemporary ceramics; functional, sculptural, and figurative works; Ohio pottery 1870s to the present and American studio pottery.

Oklahoma

National Cowboy & Western Heritage Museum

Oklahoma City, OK; www.nationalcowboymuseum.org
Representing 50 clay artists.

Oregon

White Bird Gallery

Cannon Beach, OR; www.whitebirdgallery.com
Primarily exhibiting contemporary ceramics; functional and sculptural works; figurative and narrative work, wall-relief sculpture; representing 15 clay artists.

Coos Art Museum

Coos Bay, OR; www.coosart.org
Primarily exhibiting sculptural and figurative ceramics; representing 20–30 clay artists.

Freed Gallery

Lincoln City, OR; freedgallery.com
Primarily exhibiting contemporary ceramics; sculptural, functional, and figurative works; representing 7 artists: Roger Allen, Phillip Charette, Katy McFadden, Andrea Peyton, Wally Schwab, Michael Schwartz, Dianne Story-Cunningham.

Adams and Ollman

Portland, OR; www.adamsandollman.com
Primarily exhibiting historical and contemporary ceramics; sculptural and installation works; representing 2 clay artists.

Eutectic Gallery

Portland, OR; www.eutecticgallery.com
Primarily exhibiting contemporary ceramics; functional, sculptural, figurative, and installation works; showcasing emerging artists, innovative clay methods and contemporary works; representing 20+ clay artists.

Guardino Gallery

Portland, OR; www.guardinogallery.com
Primarily exhibiting contemporary ceramics; sculptural works; Northwest artists; representing 15–20 clay artists.

Pennsylvania

Historic Yellow Springs & Chester Springs Studio

Chester Springs, PA; www.yellowsprings.org
Primarily exhibiting contemporary ceramics; functional and sculptural works; representing 11–20 clay artists.

Touchstone Center for Crafts

Farmington, PA; www.touchstonecrafts.org
Primarily exhibiting contemporary ceramics; functional and sculptural works.

Wheel of Light Studio LLC

Halifax, PA; www.wheeloflightstudio.com
Primarily exhibiting contemporary ceramics; functional and sculptural works; representing 7 clay artists.

Saint Joseph's University, Merion Hall Gallery

Merion Station, PA; www.sju.edu/gallery
Primarily exhibiting contemporary ceramics; sculptural, functional, figurative, and installation works.

The Clay Studio

Philadelphia, PA; www.theclaystudio.org
Primarily exhibiting contemporary ceramics; functional, sculptural, figurative, and installation works; emerging to established ceramic artists from the US, Canada, and some international; representing 400 clay artists.

Fleisher/Ollman Gallery

Philadelphia, PA; www.fleisher-ollmangallery.com
Primarily exhibiting historical and contemporary ceramics; sculptural and installation works; representing 10 clay artists.

Institute of Contemporary Art, University of Pennsylvania

Philadelphia, PA; icaphila.org
Primarily exhibiting contemporary ceramics; installation works; representing 20+ clay artists.

Philadelphia Museum of Art

Philadelphia, PA; www.philamuseum.org
Primarily exhibiting contemporary and historical ceramics; functional and sculptural works; Dutch ceramics, including tiles, Delft earthenware, and porcelain from the 16th–20th centuries.

Box Heart Gallery

Pittsburgh, PA; www.boxheartgallery.com
Primarily exhibiting contemporary ceramics; sculptural and functional works; living, contemporary, emerging and mid-career artists; representing 5+ clay artists.

Contemporary Craft

Pittsburgh, PA; www.contemporarycraft.org
Primarily exhibiting contemporary ceramics; functional, sculptural, figurative, and installation works; representing 12 clay artists.

The Mattress Factory

Pittsburgh, PA; www.mattress.org
Primarily exhibiting contemporary ceramics; in-residence ceramic artists.

Everhart Museum of Natural History, Science & Art

Scranton, PA; www.everhart-museum.org
Primarily exhibiting historical and contemporary ceramics.

Marywood University Art Galleries

Scranton, PA; www.marywood.edu/galleries
Primarily exhibiting contemporary and historical ceramics; sculptural works; Asian and European ceramics circa 19th–early-20th century.

Wayne Art Center

Wayne, PA; www.wayneart.org
Primarily exhibiting historical and contemporary ceramics; functional and sculptural works; representing 20+ clay artists.

Rhode Island

South County Art Association

Kingston, RI; www.southcountyart.org
Primarily exhibiting contemporary ceramics; functional and sculptural works; representing 92 clay artists.

Arch Contemporary Ceramics

Tiverton, RI; www.archcontemporary.com
Primarily exhibiting contemporary ceramics; functional, sculptural, figurative, and installation works; representing 12 clay artists.

Tennessee

Derryberry Gallery, Tennessee Tech University

Cookeville, TN; www.tntech.edu/centerstage/jdag.php
Primarily exhibiting contemporary ceramics; solo exhibitions of traditional utilitarian ware and contemporary installation works; representing 2 clay artists.

Sandra J. Blain Galleries, Arrowmont School of Arts and Crafts

Gatlinburg, TN; www.arrowmont.org
Primarily exhibiting contemporary and historical ceramics; functional, sculptural, and installation works; representing 20+ clay artists.

Companion Gallery

Humboldt, TN; www.companiongallery.com
Primarily exhibiting contemporary ceramics; functional works; representing 50 clay artists.

The Clay Lady's Co-op & Artist Galleries

Nashville, TN; www.theclaylady.com
Primarily exhibiting historical and contemporary ceramics; functional and sculptural works; representing 75 clay artists.

Continued on page 66.

Good earth Pottery

Est. 1969

Bellingham, Washington

Contemporary Ceramics Gallery



Ayla Mullen



AnnMarie Cooper



Larry Richmond

Local Artists
International Artists
Juried Show Opportunities

goodearthpots.com

Tennessee (continued)

Appalachian Center for Craft

Smithville, TN; www.tntech.edu/craftcenter

Primarily exhibiting contemporary ceramics; sculptural, functional, figurative, and installation works; representing 15–20 clay artists.

Texas

Austin Pottery Studio & Gallery

Austin, TX; www.atxpottery.com

Primarily exhibiting contemporary ceramics; functional works; representing 50+ local and regional clay artists.

Art League of Baytown

Baytown, TX; www.art-league-of-baytown.org

Representing 50+ clay artists.

Center for the Visual Arts, Greater Denton Arts Council

Denton, TX; www.dentonarts.com

Primarily exhibiting historical and contemporary ceramics; functional, sculptural, figurative, and installation works.

Foelber Pottery

Houston, TX; foelberpottery.com

Primarily exhibiting contemporary ceramics; functional, sculptural, and figurative works; representing 8 clay artists.

Houston Center for Contemporary Craft

Houston, TX; www.crafthouston.org

Primarily exhibiting contemporary ceramics; functional and sculptural works; all craft media; representing 50 clay artists.

Museum of Fine Arts, Houston

Houston, TX; www.mfah.org

Primarily exhibiting historical and contemporary ceramics; sculptural, functional, figurative, and installation works.

Hill Country Arts Foundation

Ingram, TX; www.hcaf.com

Primarily exhibiting contemporary functional ceramics; representing 25 clay artists.

South Texas College Library Art Gallery

McAllen, TX; library.southtexascollege.edu/LAG

Primarily exhibiting contemporary ceramics; functional, sculptural, and figurative works.

San Angelo Museum of Fine Arts

San Angelo, TX; www.samfa.org

Exhibiting primarily contemporary, some historical ceramics; sculptural, functional, figurative, and installation works; primarily American with other work from the UK, Australia, Europe, and Asia; representing 400+ clay artists.

Mossrock Studio and Fine Art Gallery

The Woodlands, TX; www.mossrock-studio.com

Primarily exhibiting contemporary ceramics; functional, figurative, and sculptural works; representing 12 clay artists.

Vermont

Bennington Museum

Bennington, VT; www.benningtonmuseum.org

Primarily exhibiting historical ceramics; sculptural, functional, and figurative works; Early American work; permanent collection of pottery made in Bennington, including Norton Pottery, the US Pottery Company, and early American redware.

Frog Hollow

Burlington, VT; www.froghollow.org

Primarily exhibiting historical and contemporary ceramics; functional and sculptural works; 200 juried Vermont artists; representing 20+ clay artists.

DaVallia Art Gallery

Chester, VT; www.thedavallia.com

Primarily exhibiting contemporary ceramics; functional works; representing 1 clay artist.

Chandler Center for the Arts

Randolph, VT; www.chandler-arts.org

Primarily exhibiting contemporary ceramics.

Virginia

Scope Gallery, The Torpedo Factory

Alexandria, VA; www.scopegallery.org

Primarily exhibiting contemporary ceramics; functional and sculptural works; representing 20+ clay artists.

Workhouse Arts Center Ceramics Program

Lorton, VA; www.workhousearts.org

Primarily exhibiting contemporary ceramics; functional, sculptural, figurative, and installation works; representing 7 clay artists.

1708 Gallery

Richmond, VA; www.1708gallery.org

Primarily exhibiting contemporary artwork and ceramics from local, regional, national, and international artists.

Alma's RVA

Richmond, VA; www.almasrva.com

Primarily exhibiting contemporary craft, including ceramics.

Eleanor D. Wilson Museum, Hollins University

Roanoke, VA; www.hollins.edu/museum

Primarily exhibiting contemporary ceramics.

Abby Aldrich Rockefeller Folk Art Museum

Williamsburg, VA; colonialwilliamsburg.org/discover/historic-area/art-museums-of-colonial-williamsburg

Primarily exhibiting historical and American ceramics; functional works.

DeWitt Wallace Decorative Arts Museum

Williamsburg, VA; colonialwilliamsburg.org/discover/historic-area/art-museums-of-colonial-williamsburg

Primarily exhibiting historical ceramics; functional works; ceramics owned and used in colonial America including work from the US, England, Germany, and China.



1 Vessels by Kirsty Kash, Chanakarn Semachai, Bri Larson, Candace Gooch-Ward, Evie Botbyl, Marcè Nixon-Washington, Eric Botbyl. 2 (Left to right) YoonJee Kwak's *Mapping of Memories* and *Pocket Moon Jar*, to 7½ in. (19 cm) in diameter, handbuilt porcelain, gold luster. 1, 2 Photos: Jill Botbyl. "Ceramics 2025/Spring Exhibition," at Companion Gallery (www.companiongallery.com) in Humboldt, Tennessee, April 2025.



**SARATOGA
CLAY ARTS
CENTER**

CALL FOR ENTRY

THE BOTANICAL VESSEL

**JURIED BY
BRENDA QUINN**

A national juried exhibition of
functional works that explore
plant-inspired form, surface,
texture or concept in thoughtful
and innovative ways

ENTRY DEADLINE: JANUARY 15

**DETAILS AT
WWW.SARATOGACLAYARTS.ORG**



**JUROR'S CHOICE
AWARD \$300
DIRECTOR'S CHOICE
AWARD \$100**

Washington

The Island Gallery

Bainbridge Island, WA; www.theislandgallery.net
Primarily exhibiting contemporary ceramics; sculptural, functional, figurative, and installation works; wood-fired ceramics; representing 45 clay artists.

Bellevue Arts Museum

Bellevue, WA; www.bellevuearts.org
Primarily exhibiting contemporary ceramics; functional and sculptural works.

Good Earth Pottery

Bellingham, WA; www.goodearthpots.com
Exhibiting contemporary ceramics; functional and sculptural works; specializing in Pacific Northwest artists, plus guest artists from across the US and Canada; representing 35 clay artists.

J. Franklin Fine Art, Inc.

Camano Island, WA; www.JFranklinFineArt.com
Primarily exhibiting historical ceramics; functional, sculptural, and figurative works; mid-late 20th-century American studio pottery; representing 20+ clay artists.

Kirkland Arts Center

Kirkland, WA; www.kirklandartscenter.org
Primarily exhibiting contemporary ceramics, Pacific Northwest artists; sculptural works; occasionally exhibiting artists from across the US.

Foster/White Gallery

Seattle, WA; www.fosterwhite.com
Primarily exhibiting contemporary ceramics; sculptural and figurative works; representing 2 clay artists.

Gallery IMA

Seattle, WA; www.galleryima.com
Primarily exhibiting contemporary ceramics; sculptural works; representing 18 clay artists.

KOBO Shop and Gallery

Seattle, WA; www.koboseattle.com
Exhibiting contemporary ceramics; functional and sculptural works; representing 25 clay artists.

Pottery Northwest Gallery

Seattle, WA; www.potterynorthwest.org
Primarily exhibiting contemporary ceramics; functional, sculptural, figurative, and installation works.

Seattle Art Museum

Seattle, WA; www.seattleartmuseum.org
Primarily exhibiting contemporary and historical ceramics; sculptural, functional, figurative, and installation works; representing 1000 clay artists.

Traver Gallery

Seattle, WA; www.travergallery.com
Primarily exhibiting contemporary ceramics; functional, sculptural, figurative, and installation works; representing 10 clay artists.

Modern Glaze

Shoreline, WA; www.modernglaze.com
Primarily exhibiting contemporary functional ceramics; representing 10 clay artists.

Trackside Studio Ceramic Art Gallery

Spokane, WA; www.tracksidestudio.net
Primarily exhibiting contemporary functional ceramics in 12 annual exhibitions; representing 50 clay artists

West Virginia

David L. Dickerson Fine Arts Gallery at Tamarack

Beckley, WV; www.tamarackwv.com
Primarily exhibiting contemporary ceramics by West Virginia artists; functional and sculptural works; representing 43 clay artists.

Rivers Studio & Gallery

Bolivar, WV; www.annerulethompson.com
Representing 5 clay artists.

Hart Galleries, Stifel Fine Arts Center, Oglebay Institute

Wheeling, WV; www.oionline.com/stifel
Primarily exhibiting contemporary ceramics.

Wisconsin

Rowe Pottery

Cambridge, WI; www.rowepottery.com
Primarily exhibiting hand-decorated, reduction-fired functional pottery, dinnerware, and serveware; representing 5 clay artists.

Juddville Contemporary Clay Studio Gallery

Fish Creek, WI; www.instagram.com/juddvilleclaywi
Primarily exhibiting contemporary ceramics; sculptural, figurative, and installation works; large-scale clay murals; representing 2 clay artists.

Peninsula School of Art

Fish Creek, WI; www.peninsulaschoolofart.org
Primarily exhibiting historical and contemporary ceramics; functional and sculptural works; American art and crafts; representing 10–20 clay artists.

Chazen Museum of Art, University of Wisconsin-Madison,

Madison, WI; www.chazen.wisc.edu
Primarily exhibiting historical and contemporary ceramics; functional works.

HYART Gallery

Madison, WI; www.hyartgallery.com
Representing 12 clay artists.

James May Gallery

Milwaukee, WI; www.jamesmaygallery.com
Representing 12 clay artists.

Racine Art Museum (RAM)

Racine, WI; www.ramart.org
Primarily exhibiting contemporary ceramics; functional works; RAM's collection of ceramics, which focuses on mid- to late-20th-century American clay.

Wilson Creek Pottery

Spring Green, WI; www.wilsoncreekpottery.com
Primarily exhibiting functional stoneware; representing 1 clay artist.

Abel Contemporary Gallery

Stoughton, WI; www.abelcontemporary.com
Primarily exhibiting contemporary ceramics; functional, sculptural, figurative, and installation works; American fine art and craft; representing 20+ clay artists.

Continued on page 70.



Candace Gooch-Ward's *Layered Pitcher*, 10 3/4 in. (27.3 cm) in height, wheel-thrown and altered dark stoneware, underglaze, glaze, fired to cone 6. Photo: Jill Botbyl. "Last Call IX: Handmade Ceramics for Storing, Pouring, & Sipping Fine Libations," at Companion Gallery (www.companiongallery.com) in Humboldt, Tennessee, March 2025.

Fall 2025



Studio Tour

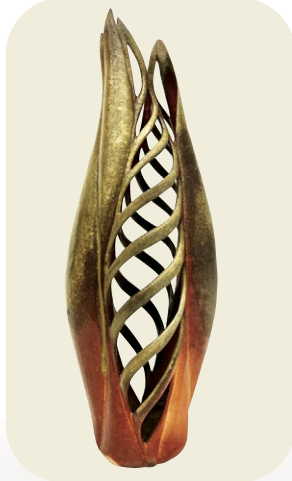
October 18–19

Saturday: 10am–5pm

Sunday: Noon–5pm

16hands.com

@16.hands



Joey Sheehan
Veronica and David Bennett
Josh Manning
Wendy Wrenn Werstlein

Andrea Denniston
Joe Frank McKee
Alexandra Barao
Melanie Risch
Hanna Traynham

Reida Sage
Abby Reczek
Sarah McCarthy
Beatriz Gutiérrez González
Andrew McIntyre

Seth Guzovsky
Hona Leigh Knudsen
Ron Sutterer

Fine American crafts in Floyd County, in Southwest Virginia's Blue Ridge Mountains

VIRGINIA
IS FOR
POTTERY
LOVERS

Wyoming

Margo's Pottery & Fine Crafts

Buffalo, WY; www.margospottery.com

Primarily exhibiting contemporary ceramics; functional works; representing 9–12 clay artists.

Australia

Canberra Potters Watson Arts Centre

Watson, ACT; www.canberrapotters.com.au

Primarily exhibiting contemporary ceramics; sculptural, functional, and figurative works.

Narek Galleries

Bermagui, NSW; www.narekgalleries.com

Primarily exhibiting contemporary Australian ceramics; functional, sculptural, and installation works; representing 15 clay artists.

Object: Australian Centre for Craft and Design

Darlinghurst, NSW; australiandesigncentre.com

Primarily exhibiting contemporary ceramics.

Rosedale Street Gallery

Dulwich Hill, NSW;

facebook.com/Rosedalestreetgallery

Primarily exhibiting contemporary ceramics; functional and sculptural works.

Newcastle Art Gallery

Newcastle, NSW; www.nag.org.au

Primarily exhibiting contemporary and historical ceramics: Australian (post-WWII); Japanese (Sodeisha, early 19th-century, and post-WWII); representing over 500 clay artists.

Sabbia Gallery

Redfern, NSW; www.sabbiagallery.com

Primarily exhibiting contemporary ceramics; functional, sculptural, figurative, and installation works; Australian ceramics; representing 12 clay artists.

Robin Gibson Gallery

Sydney, NSW; www.robingibson.net

Primarily exhibiting contemporary ceramics; functional, sculptural, figurative, and installation works.

Falls Gallery

Wentworth Falls, NSW; www.fallsgallery.com.au

Primarily exhibiting contemporary Australian ceramics; Japanese-influenced studio ceramics.

JamFactory

Adelaide, SA; www.jamfactory.com.au

Primarily exhibiting contemporary ceramics; sculptural, functional, and figurative works; Australian ceramics; representing 17 clay artists.

Potiche Gallery at Bendigo Pottery

Epsom, VIC; www.bendigopottery.com.au

Primarily exhibiting contemporary ceramics; Victorian regional ceramics; representing Tony Barnes, Su Hanna, Sue James, Graham Masters, Kaye Poulton, and Scott Wileman.

Skepsi Gallery

Malvern, VIC; www.skepsigallery.com.au

Primarily exhibiting contemporary ceramics; Australian contemporary studio ceramics; representing 50 clay artists.

Shepparton Art Museum

Shepparton, VIC; sheppartonartmuseum.com.au

Primarily exhibiting contemporary and historical ceramics; sculptural, functional, figurative, and installation works; Australian ceramics; representing 50+ clay artists.

Belgium

Modern Shapes Gallery

Antwerp, Belgium; www.modernshapes.com

Primarily exhibiting contemporary, sculptural, abstract ceramics; representing 12 clay artists.

Puls Contemporary Ceramics

Brussels, Belgium; www.pulsceramics.com

Primarily exhibiting contemporary international ceramics.

Bermuda

Jon Faulkner Gallery

Sandys, Bermuda; jonfaulknerpottery.com

Primarily exhibiting contemporary ceramics; functional works; Bermuda potters and artists; representing 8 clay artists.

Canada

Willock & Sax Gallery

Banff, Alberta; www.willockandsaxgallery.com

Primarily exhibiting historical and contemporary ceramics; sculptural and functional works; Western Canadian ceramic artists; representing 14 clay artists.

Bluerock Gallery

Black Diamond, Alberta; www.bluerockgallery.ca

Representing 16 clay artists.

Christine Klassen Gallery

Calgary, Alberta; www.christineklassengallery.com

Primarily exhibiting historical and contemporary ceramics; sculptural works.

Alberta Craft Council Gallery

Edmonton, Alberta; www.albertacraft.ab.ca

Primarily exhibiting contemporary ceramics; functional and sculptural works; Alberta ceramic artists; representing 47 clay artists.

The Potters Place Gallery

Courtenay, British Columbia; www.thepottersplace.ca

Primarily exhibiting contemporary ceramics; functional, figurative, and sculptural works; representing 29 clay artists.

The Museum of Anthropology, University of British Columbia

Vancouver, British Columbia; www.moa.ubc.ca

Primarily exhibiting historical and contemporary functional and figurative ceramics. Worldwide collection: East Asian (primarily Chinese); European (15th–19th century); Central/South American (mainly Peruvian); and contemporary British Columbian works.

General Fine Craft

Almonte, Ontario; www.generalfinecraft.com

Primarily exhibiting contemporary ceramics; functional, sculptural, figurative, and installation works; Canadian artists; representing 40+ clay artists.

Art Gallery of Burlington

Burlington, Ontario; www.agb.life

Primarily exhibiting contemporary; sculptural and functional ceramics; Canadian artists.

L.A. Pai Gallery

Ottawa, Ontario; www.lapaigallery.com

Primarily exhibiting contemporary ceramics; sculptural works; Canadian artists.

Gardiner Museum

Toronto, Ontario; www.gardinermuseum.com

Representing 10+ clay artists.

Vessels+Sticks

Toronto, Ontario; vesselsandsticks.com

Primarily exhibiting contemporary ceramics; sculptural, functional, and figurative works; representing nearly 40 clay artists.

Canadian Clay and Glass Gallery

Waterloo, Ontario; www.theclayandglass.ca

Primarily exhibiting sculptural, installation, and functional ceramics; Canadian and international ceramic and glass artists.

La Guilde

Montreal, Québec; laguilde.com

Primarily exhibiting contemporary (mainly), but also historical ceramics; sculptural, figurative, installations, some functional works; established and emerging artists based in Canada; representing 11 clay artists.

Centre Materia

Québec City, Québec; www.centremateria.com

Representing 8–10 clay artists.

MacKenzie Art Gallery

Regina, Saskatchewan; www.mackenzie.art

Primarily exhibiting historical and contemporary ceramics; functional, sculptural, figurative, and installation works; representing 1 clay artist.

SCC Gallery

Saskatoon, Saskatchewan; www.saskcraftcouncil.org

Primarily exhibiting contemporary ceramics; sculptural, functional, figurative, and installation works; Canadian artwork; representing 60 clay artists.

Croatia

Croatian Ceramic Association— KERAMEIKON

Varazdin, Croatia; www.kerameikon.com

Primarily exhibiting contemporary sculptural and figurative ceramics; representing 30+ clay artists.

Denmark

Grønbechs Gård

Hasle, Denmark; www.groenbechsgaard.dk

Representing 100 clay artists.

CLAY Keramikmuseum Danmark / CLAY Museum of Ceramic Art

Middelfart, Denmark; www.claymuseum.dk

Primarily exhibiting historical and contemporary ceramics; functional, sculptural, figurative, and installation works; mostly Danish ceramics, some international ceramics; permanent collections; representing 200+ clay artists.

England

Primavera

Cambridge, Cambridgeshire; primavera-gallery.co.uk

Primarily exhibiting contemporary work but also a few historical pieces to show the inspiration; functional, sculptural, and figurative works; British ceramics; representing 100 clay artists.

One Village

Woodstock, Charlbury; www.onevillage.com

Primarily exhibiting contemporary ceramics; mostly functional works.

The Arc

Cheshire, Chester;

www.instagram.com/The_Arc_Gallery

Primarily exhibiting contemporary ceramics; sculptural, functional, and figurative works; studio and domestic ware; representing 30–40 clay artists.

Yew Tree Gallery

Penzance, Cornwall; www.yewtreegallery.com

Primarily exhibiting contemporary ceramics; representing Jill Fanshawe Kato, David Garland, Laurel Keeley, Nigel Lambert, Sophie MacCarthy, John Maltby, Sutton Taylor, and Judith Rowe.

Leach Pottery

St. Ives, Cornwall; www.leachpottery.com

Primarily exhibiting historical and contemporary ceramics; functional works; focus on contemporary and 20th-century studio pottery; representing 75 clay artists.

Continued on page 72.

EARTHWORKS: EVOLUTION



THE UMBRELLASM
ARTS CENTER

40 Stow Street, Concord MA | TheUmbrellaArts.org



Exhibition April 29 - June 28, 2026

Juried by Lisa Orr | In the Allie Kussin Gallery

A regional show celebrating the depth of history, tradition, and cultural expression in contemporary ceramics, as well as the ways in which artists continue to expand the field through innovation and reinterpretation. *Opening Reception April 29, 2026, 6-8 PM.*

CALL FOR SUBMISSIONS

Open to all works which use clay as the primary medium, both functional and sculptural. Open to artists currently residing or working in New England.



► 2026 DEADLINES

Submission: JAN 9

Artist Notification: FEB 20

Receiving: APR 1

For more information and to submit works, visit TheUmbrellaArts.org/Earthworks

SALT AND PEPPER CENTERPIECE BY LISA ORR | 9"X5"X3" | EARTHENWARE WITH SLIPS, SPRIGS AND POLYCHROME GLAZES

England (continued)

St. Ives Ceramics

St. Ives, Cornwall; www.st-ives-ceramics.co.uk
Primarily exhibiting historical and contemporary ceramics; functional works; studio pottery; representing 70 clay artists.

Blackwell

Bowness-on-Windermere, Cumbria; www.lakelandarts.org.uk/blackwell
Primarily exhibiting historical (Arts & Crafts Movement) and contemporary functional ceramics.

Farfield Mill Arts & Heritage Centre

Sedburgh, Cumbria; www.farfieldmill.org
Primarily exhibiting contemporary ceramics; functional works; representing 12 clay artists.

Derby Museum & Art Gallery

Derby, Derbyshire; www.derbymuseums.org
Primarily exhibiting historical ceramics; functional and figurative works; collections of Derby porcelain from 1750 to present, and Derbyshire pottery from Langley Mill, Woodville, Denby, and the Chesterfield area, including 20th-century studio pottery.

The Devon Guild of Craftsmen

Bovey Tracey, Devon; www.crafts.org.uk
Primarily exhibiting contemporary ceramics; functional, sculptural, and figurative works; Guild representing over 70 ceramic artists from the South West of England. Exhibitions feature work by national and international makers; representing 75 clay artists.

Simon Drew Gallery

Dartmouth, Devon; www.simondrew.co.uk
Primarily exhibiting contemporary English ceramics; functional and sculptural works; representing 25 to 30 ceramic artists.

45 Southside Gallery

Plymouth, Devon; www.45southside.co.uk
Primarily exhibiting contemporary ceramics; functional, sculptural, and figurative works; Devon or Cornwall artists; representing 20 clay artists.

Lantic Gallery

Tiverton, Devon; lanticgallery.co.uk
Primarily exhibiting contemporary ceramics; functional and sculptural works; representing 15 clay artists.

Walford Mill Education Trust Ltd

Wimborne, Dorset; walfordmillcrafts.co.uk
Primarily exhibiting contemporary ceramics.

The British Museum

London, England; www.britishmuseum.org
Primarily exhibiting historical ceramics.

Cecilia Colman Gallery

London, England; www.ceciliacolmangallery.com
Primarily exhibiting contemporary British ceramics; sculptural and figurative works; representing 40 clay artists.

Contemporary Applied Arts Gallery

London, England; www.caa.org.uk
Primarily exhibiting contemporary ceramics; functional, sculptural, figurative, and installation works; British craft; representing 90+ clay artists.

Contemporary Ceramics

London, England; www.contemporaryceramics.uk
Primarily exhibiting contemporary ceramics; functional, sculptural, and figurative works; specializing in British-based artists; representing 90–100 clay artists.

Corvi-Mora

London, England; www.corvi-mora.com
Primarily exhibiting contemporary ceramics; sculptural, functional, figurative, or installation works.

Flow Gallery

London, England; www.flowgallery.co.uk
Primarily exhibiting contemporary ceramics; functional and sculptural works; International ceramics; representing 40 clay artists.

Grove Vale Ceramics

London, England; www.grovevaleceramics.co.uk
Primarily exhibiting contemporary sculptural and functional ceramics by UK artists.

Harlequin Gallery

London, England; www.studio-pots.com
Primarily exhibiting historical ceramics; functional works; emphasis on wood-fired work.

Marsden Woo Gallery

London, England; www.marsdenwoo.com
Primarily exhibiting contemporary ceramics; sculptural and figurative works; representing Gordon Baldwin, Alison Britton, Ken Eastman, Philip Eglin, Kerry Jameson, Chun Liao, Nao Matsunaga, Carol McNicoll, Sara Radstone, James Rugler, Martin Smith, and Dawn Youll.

Maud & Mabel

London, England; www.maudandmabel.com
Representing 55 clay artists.

Petronilla Silver

London, England; www.petronillasilver.co.uk
Primarily exhibiting contemporary ceramics; functional, sculptural, and installation works; representing 6 clay artists.

Pippy Houldsworth Gallery

London, England; www.houldsworth.co.uk
Primarily exhibiting contemporary ceramics; sculptural works.

Tristan Hoare

London, England; www.tristanhoare.co.uk
Primarily exhibiting contemporary ceramics; sculptural works; a range of contemporary art; representing 3–4 clay artists.

Vessel Gallery

London, England; www.vesselgallery.com
Primarily exhibiting contemporary ceramics; sculptural works; vessels and sculpture.

Victoria & Albert Museum

London, England; www.vam.ac.uk
Primarily exhibiting contemporary and historical ceramics; sculptural and figurative works; Post-Medieval European, North American, Middle Eastern, and East Asian ceramics.

Manchester Craft & Design Centre

Manchester, England; craftanddesign.com
Primarily exhibiting contemporary ceramics.

Sculpt Gallery

Tiptree, Essex; www.sculptgallery.com
Primarily exhibiting contemporary ceramics; sculptural and figurative works; contemporary British art ceramics; representing 10 clay artists.

The Guild at 51

Cheltenham, Gloucestershire; guildcrafts.org.uk
Primarily exhibiting contemporary ceramics; functional and sculptural works; work by Gloucestershire Guild of Craftsmen members; representing 12 clay artists.

New Brewery Arts

Cirencester, Gloucestershire; newbreweryarts.org.uk
Primarily exhibiting contemporary ceramics; functional, sculptural, and figurative works; representing 15 clay artists.

Quay Arts

Isle of Wight, Hampshire; www.quayarts.org
Primarily exhibiting contemporary ceramics; functional and sculptural works.

Bluestone Gallery

Hay-on-Wye, Hereford; www.bluestonegallery.com
Primarily exhibiting contemporary ceramics; sculptural, functional, and figurative works; representing 15 clay artists.

The Haymakers Gallery

Hay-on-Wye, Hereford; haymakers.co.uk
Primarily exhibiting contemporary functional and figurative ceramics.

Old Chapel Gallery, The Lancashire Makers

Pembridge, Herefordshire; oldchapelgallery.co.uk
Primarily exhibiting contemporary British ceramics; sculptural, functional, and figurative works; country style.

Platform Gallery and VIC

Clitheroe, Lancashire; ribblevalley.gov.uk/platformgallery
Primarily exhibiting contemporary British craft ceramics; functional works; representing 30 clay artists.

The National Centre for Craft and Design

Sleaford, Lincolnshire; nationalcraftanddesign.org.uk
Primarily exhibiting contemporary ceramics; sculptural and functional works; representing 15 clay artists.

Bluecoat Display Centre

Liverpool, Merseyside; bluecoatdisplaycentre.com
Primarily exhibiting contemporary ceramics; functional and sculptural works; mainly UK-based ceramic artists; representing 60+ clay artists.

Bircham Gallery

Holt, Norfolk; www.birchamgallery.co.uk
Primarily exhibiting contemporary ceramics; functional, sculptural, and figurative works; British studio ceramics; representing 30+ clay artists.

The Ropewalk

Barton upon Humber, North Lincolnshire; www.the-ropewalk.co.uk
Primarily exhibiting contemporary British ceramics; functional works; representing 20+ clay artists.

Pyramid Gallery

York, North Yorkshire; www.pyramidgallery.com
Primarily exhibiting contemporary British ceramics; sculptural, functional, and figurative works.

Saltbox Gallery and Workshop

York, North Yorkshire; saltboxgallery.co.uk
Primarily exhibiting contemporary ceramics; sculptural, functional, and figurative works; representing 15 clay artists.

The Harley Gallery and Foundation

Welbeck, Nottinghamshire; www.harleygallery.co.uk
Primarily exhibiting contemporary ceramics.

The Ashmolean

Oxford, Oxfordshire; www.ashmolean.org
Primarily exhibiting historical and contemporary ceramics.

David Mellor Design Ltd.

Hathersage, Sheffield; www.davidmellordesign.com
Primarily exhibiting contemporary ceramics; functional works; British domestic pottery.

Rachel Bebb Contemporary

Broughton, Stockbridge; rachelbebbcontemporary.com
Primarily exhibiting contemporary ceramics; sculptural works; representing 7 clay artists.

The Potteries Museum & Art Gallery

Hanley, Stoke-on-Trent; www.stokemuseums.org.uk
Primarily exhibiting historical and contemporary ceramics; functional, sculptural, and figurative works; Staffordshire, 20th-century British industrial and studio pottery, East Asian and Islamic ceramics, and Italian Renaissance majolica; representing 200+ clay artists.

Continued on page 74.



SAN ANGELO MUSEUM OF FINE ARTS

26th San Angelo North American Ceramic Competition

April 17 - June 21, 2026



Image: Partridge Plymouth Rock by Misty Gamble
Ceramic, metal, faux flora. 60 x 50 x 50 in.

Photo courtesy of the artist

On display at the 25th San Angelo North American Ceramic Competition


Juror: Linda Ganstrom
Invited Artist: Marc Leuthold

Call for Entries

Online December 1, 2025
Entry deadline January 31, 2026



www.samfa.org

 (325) 653-3333

 1 Love St, San Angelo, TX

Sponsored by:
San Angelo Museum Endowment for Ceramic Events
Texas Commission on the Arts
John Williams

England (continued)

EJaRt Creative (EJR Ceramics Ltd)

Hasketon, Suffolk; www.ejartcreative.co.uk
Primarily exhibiting contemporary ceramics; functional and sculptural works.

Crafts Study Centre, University for the Creative Arts

Farnham, Surrey; csc.uca.ac.uk
Primarily exhibiting 20th- and 21st-century functional ceramics; multimedia, representing approximately 40 ceramic artists.

New Ashgate Gallery

Farnham, Surrey; www.newashgate.org.uk
Primarily exhibiting contemporary British ceramics; functional, sculptural, installation, and figurative works.

The Hannah Peschar Sculpture Garden

Ockley, Surrey; www.hannahpescharsculpture.com
Primarily exhibiting contemporary ceramics; sculptural works; representing 6 clay artists.

The Green Tree Gallery

Haywards Heath, Sussex; greentreegallery.co.uk
Primarily exhibiting contemporary ceramics; sculptural, figurative, and functional works.

The Sussex Guild Shop & Gallery

Lewes, Sussex; www.thesussexguild.co.uk
Primarily exhibiting contemporary ceramics; functional works; Sussex and surrounding counties; representing 8 clay artists.

Rye Art Gallery

Rye, Sussex; ryeartgallery.co.uk
Primarily exhibiting contemporary ceramics; sculptural, functional, figurative, and installation works.

Bilston Craft Gallery

Bilston, West Midlands; www.wolverhamptonart.org.uk/visit/Bilston
Primarily exhibiting contemporary ceramics; functional works; contemporary craft; representing 12 clay artists.

RBSA Gallery

Birmingham, West Midlands; www.rbsa.org.uk
Primarily exhibiting contemporary ceramics; functional, sculptural, and figurative works; the RBSA Gallery welcomes artwork from UK and international artists. The majority of our exhibitions feature UK artists, particularly from the Midlands.

Bevere Gallery

Worcester, West Midlands; beveregallery.com
Primarily exhibiting contemporary ceramics; sculptural works; British studio ceramics; representing 150 clay artists.

The Craft Centre and Design Gallery

Leeds, West Yorkshire; www.craftcentreleeds.co.uk
Primarily exhibiting contemporary ceramics; functional and sculptural works; domestic and studio ceramics; representing 100 clay artists.

Yorkshire Sculpture Park

Wakefield, Yorkshire; ysp.org.uk
Primarily exhibiting contemporary ceramics; functional works; representing 50 clay artists.

France

Centre Céramique Contemporaine

La Borne, France; www.laborne.org
Primarily exhibiting contemporary ceramics; functional and sculptural works; representing 60 clay artists.

Galerie Capazza

Nançay, France; www.galerie-capazza.com
Primarily exhibiting contemporary ceramics; sculptural, functional, and figurative works; both national and international ceramics; representing 30 clay artists.

Bernard Palissy Museum,

Lacapelle-Biron, France; www.museepalissy.net
Primarily exhibiting contemporary and historical ceramics; representing 12 clay artists.

Fondation d'entreprise Bernardaud

Limoges, France; www.bernardaud.com
Primarily exhibiting contemporary ceramics; sculptural, figurative, installation; terra cotta, earthenware, stoneware, bone china, porcelain works; international artists; representing 14–18 clay artists.

Musée de la Poterie Méditerranéenne

Saint-Quentin-la-Poterie, France; musee-poterie-mediterranee.com
Primarily exhibiting historical and contemporary ceramics; functional works; traditional ceramics from Mediterranean countries.

Terra Viva Galerie

Saint-Quentin-la-Poterie, France; www.terraviva.fr
Primarily exhibiting contemporary ceramics; functional, sculptural, and figurative works; French and European ceramics; representing 20+ clay artists.

Sèvres, Cité de la céramique

Sèvres, France; www.musee-ceramique-sevres.fr
Primarily exhibiting contemporary and historical ceramics; functional, sculptural, figurative, and installation works; Sèvres production forms the collection's centerpiece; representing 1 clay artist.

Musée Magnelli, Musée de la Céramique

Vallauris, France; www.vallaurisgolfejuan-tourisme.fr/que-faire/culture-visites/chateau-musee
Primarily exhibiting historical and contemporary ceramics.

A.I.R. Vallauris and Galerie Aqui Siam Ben

Vallauris, France; www.air-vallauris.org
Primarily exhibiting contemporary ceramics; sculptural, functional, figurative, and installation works; a wide variety of clays, glazes, and firing techniques; representing as many as 80 artists.

Germany

Galerie Theis-Keramik

Berlin, Germany; www.facebook.com/galeriethesis
Primarily exhibiting contemporary and historical ceramics; functional and sculptural works; studio pottery from Germany, Austria, and Switzerland; representing 30 clay artists.

feuer-zeug-keramik

Berlin, Germany; feuer-zeug-keramik.de
Primarily exhibiting contemporary ceramics, functional works.

Zentrum für Keramik

Berlin, Germany; www.ceramics-berlin.de
Primarily exhibiting contemporary ceramics.

Keramik-Museum Berlin (KMB)

Berlin-Charlottenburg, Germany; www.keramik-museum-berlin.de
Primarily exhibiting historical and contemporary ceramics; functional, sculptural, and figurative works; Central European ceramics.

Töpfermuseum Duingen

Duingen, Germany; www.toepfermuseum-duingen.de
Primarily exhibiting historical ceramics; functional works; Duingen ceramics; representing 1 clay artist.

Continued on page 76.



Wes Brown's various works. Photo: Jill Botbyl. "Wesley T. Brown Solo Exhibition," at Companion Gallery (www.companiongallery.com) in Humboldt, Tennessee, January 2025.



The Bascom's ceramics program offers year-round classes in wheel throwing, handbuilding, and sculpture for all ages and skill levels. Programming includes guest artist lectures, exhibitions, and the annual Bascom Clay Symposium, an event celebrating innovation and tradition in contemporary ceramics.

A nonprofit visual arts center in Highlands, NC, The Bascom offers free gallery admission and is committed to providing accessible, high-quality arts experiences through education, outreach, and professional development opportunities for artists at every stage of their career.

Top: 2025 Bascom Clay Symposium Artists, Andréa Keys Connell, Christine Kosiba, and Taylor Robenalt demonstrate
Left to Right: Frank Vickery, Director of Ceramics demonstrates, a child engages in a pottery workshop, students fire
The Bascom's new soda kiln during a workshop with Gertrude Graham Smith.

THE BASCOM
A CENTER FOR THE VISUAL ARTS
TheBascom.org | 828.526.4949
323 Franklin Road, Highlands, NC



Funding is due in part to a Tourism Grant
with Visit Highlands, NC.



Germany (continued)

Hetjens-Museum**Deutsches Keramikmuseum**

Düsseldorfer, Germany; duesseldorf.de/hetjens
Primarily exhibiting historical ceramics.

Museum Eckernförde

Eckernförde, Germany; www.museum-eckernfoerde.de
Primarily exhibiting contemporary ceramics; functional works.

KERAMION

Frechen, Germany; www.keramion.de
Primarily exhibiting historical and contemporary ceramics; sculptural and figurative works; Bartmann-jugs, Rhenish stoneware and earthenware; ceramics mainly from the second half of the 20th century; representing 1 clay artist.

Galerie Bollhorst

Freiburg, Germany; www.galerie-bollhorst.de
Primarily exhibiting contemporary ceramics; representing 40+ clay artists.

Galerie Marianne Heller

Heidelberg, Germany; www.galerie-heller.de
Primarily exhibiting contemporary and international ceramics; sculptural and vessel works.

Kasino

Höhr-Grenzhausen, Germany; www.kultur-kasino.de
Primarily exhibiting contemporary ceramics; functional, sculptural, and figurative works; contemporary German and European ceramics.

**Keramikmuseum Westertal,
German Collection for Historical and
Contemporary Ceramics**

Höhr-Grenzhausen, Germany; www.keramikmuseum.de
Primarily exhibiting contemporary and historical ceramics; sculptural, functional, and figurative works; representing 25 clay artists.

Grassi Museum für Angewandte Kunst

Leipzig, Germany; www.grassi-leipzig.de
Primarily exhibiting historical and contemporary ceramics; representing 1500–2000 clay artists.

**Ofen- und Keramikmuseum /
Hedwig Bollhagen Museum**

Velten, Germany; www.okmhb.de
Primarily exhibiting historical ceramics; functional and figurative works; representing 20+ clay artists.

Internationales Keramik-Museum

Weiden, Germany; www.dnstdm.de
Primarily exhibiting historical and contemporary ceramics; functional works; representing 100+ clay artists.

Belinda Berger Gallery

Westerstede, Germany; www.belindaberger.de
Primarily exhibiting contemporary ceramics; functional, sculptural, and figurative works.

Hungary

MUSEION KECSKEMET

Kecskemét, Hungary; www.icshu.org
Primarily exhibiting contemporary ceramics; exhibitions by Hungarian and international artists; representing 12 clay artists.

Ireland

Lavit Gallery

Cork, Ireland; www.lavitgallery.com
Primarily exhibiting contemporary ceramics; sculptural and installation works; representing 10 clay artists.

Gallery Zozimus

Dublin, Ireland; www.galleryzozimus.ie
Primarily exhibiting contemporary ceramics; sculptural and figurative works; 95% Irish made, also work from the US, Holland, and Czech Republic; representing 60 clay artists.

Italy

mini_ma Gallery

Amelia, Italy; www.mini-ma.art
Primarily exhibiting contemporary ceramics with a focus on Japanese culture and ceramic philosophy; functional and sculptural works; representing 5 clay artists.

La Meridiana International Ceramics School

Certaldo, Italy; www.lameridiana.fi.it/residency
Primarily exhibiting contemporary ceramics; functional and sculptural works; representing 3 clay artists.

C.R.E.T.A. Rome

Rome, Italy; www.cretarome.com
Primarily exhibiting international and contemporary ceramics; functional, sculptural, figurative, and installation works; representing 20+ clay artists.

Japan

Museum of Modern Ceramic Art

Tajimi City, Gifu Prefecture; cpm-gifu.jp/museum
Primarily exhibiting contemporary and historical ceramics; functional, sculptural, figurative, installation works; Japanese ceramics from Meiji period to present, international ceramics from the time of Art Nouveau onward; representing 425 clay artists.

The Museum of Arts & Crafts

Itami, Hyogo; japanese-museum.com/the-museum-of-art-craftitami-hyogo
Primarily exhibiting contemporary ceramics; sculptural and functional, tableware made by up-and-coming ceramic artists; representing 40 clay artists.

The Shigaraki Ceramic Cultural Park

Koka City, Shiga Prefecture; www.sccp.jp/e
Primarily exhibiting contemporary ceramics.

21_21 Design Sight

Minato-ku, Tokyo Prefecture; www.2121designsight.jp
Primarily exhibiting contemporary ceramics.

A Lighthouse called Kanata

Minato-Ku, Tokyo; www.lighthouse-kanata.com
Primarily exhibiting contemporary ceramics; representing 10 clay artists.

Gallery St. Ives

Setagaya-ku, Tokyo; www.gallery-st-ives.co.jp
Primarily exhibiting contemporary and historical ceramics; functional and figurative works; British and Japanese ceramics from the 20th and 21st centuries.

Mexico

Ángulo Cero

Mexico City, Mexico; www.angulo0.com
Primarily exhibiting contemporary ceramics; functional, sculptural, and installation works; ceramics by Mexican and Latin artists that mix utilitarian with art; representing 5 clay artists.

The Netherlands

Works Jeroen Bechtold

Amsterdam, The Netherlands; www.jeroenbechtold.nl
Primarily exhibiting contemporary ceramics; sculptural works; porcelain and glaze works; representing 1 clay artist.

Galerie Terra Delft

Delft, The Netherlands; www.terra-delft.nl
Primarily exhibiting contemporary European and Chinese ceramics; sculptural, functional, figurative, and installation works; representing 55 clay artists.

Museum Het Prinsenhof

Delft, The Netherlands; museumprinsenhofdelft.nl
Primarily exhibiting historical ceramics; functional, sculptural, and figurative works; small presentation of historical Delftware; representing 20+ clay artists.

Design Museum Den Bosch

Hertogenbosch, The Netherlands; www.designmuseum.nl
Primarily exhibiting contemporary and historical ceramics.

The Princessehof National Museum of Ceramics

Leeuwarden, The Netherlands; princessehof.nl
Primarily exhibiting contemporary and historical ceramics; functional, sculptural, figurative, and installation works.

Rijksmuseum van Oudheden, National Museum of Antiquities

Leiden, Netherlands; www.rmo.nl
Primarily exhibiting historical ceramics; multimedia works; The Dutch National Museum of Antiquities brings archaeology and the ancient world to life. Civilizations of Egypt, the Classical World, the ancient Near East, and the Netherlands in prehistoric, Roman, and medieval times.

Keramikcentrum Tiendschuur Tegelen

Tegelen, The Netherlands; www.tiendschuur.net
Primarily exhibiting historical and contemporary ceramics; sculptural, functional, and figurative works.

Norway

Galleri Format Oslo

Oslo, Norway; www.format.no
Primarily exhibiting contemporary ceramics; functional, sculptural, and figurative works; representing 20+ clay artists.

People's Republic of China

**Fuping Pottery Art Village and
FuLe International Ceramic Art Museums**

Fuping, China; www.facebook.com/Fupingpotteryart
Primarily exhibiting contemporary ceramics.

The Pottery Workshop Shanghai on Shaanxi Lu

Shanghai, China; www.potteryworkshop.com.cn
Primarily exhibiting contemporary functional ceramics; Chinese ceramics, international artists from Japan and the US; representing 20 clay artists.

Republic of Korea

Gwangju Gonjam Ceramic Park

Gwangju-si, Gyeonggi-do Province; kocef.or.kr/eng/10_ggcm/01.asp
Primarily exhibiting contemporary ceramics.

Icheon Cerapia Museum

Icheon-si, Gyeonggi-do Province; kocef.org
Primarily exhibiting historical and contemporary ceramics.

Gallery LVS & LVS Craft

Seoul, South Korea; www.gallerylvs.org
Primarily exhibiting contemporary ceramics; functional, sculptural, figurative, and installation works; modern white porcelain in the Joseon dynasty tradition; representing 10 clay artists.

Yeoju Dojasesang

Yeoju-gun, Gyeonggi-do Province; kocef.or.kr/eng/02_museum/08.asp
Primarily exhibiting contemporary ceramics.

Scotland

The Strathearn Gallery

Crieff, Scotland; www.strathearn-gallery.com
Primarily exhibiting contemporary ceramics; sculptural, functional, and figurative works; contemporary ceramics made in the UK; representing 25 clay artists.

National Museum of Scotland

Edinburgh, Scotland; www.nms.ac.uk
Primarily exhibiting historical and contemporary ceramics.

Continued on page 78.

Steven Young Lee



November 7 - December 13 | St. Louis

December 2 - 7 | Design Miami

Duane Reed Gallery

4729 McPherson Ave.
St. Louis, MO 63108
314.361.4100
www.duanereedgallery.com
info@duanereedgallery.com

"Brown Moon Jar 3," 2025, porcelain, aventurine glaze, 15" x 16" x 15"





1 Steven Loucks' various works. Photo: Andy Palmer. "Steven Loucks," at In Tandem Gallery (www.intandemgallery.com) in Bakersville, North Carolina, October 1–November 1, 2025. **2** (Front to back): Chris Alveshere's various works, James Borger's three works. Photo: Phoebe Zelter. "Art in Life," at Reuben Saunders Gallery (www.reubensaundersgallery.com) in Wichita, Kansas, July 4–26, 2025.

Scotland (continued)

Stockbridge Ceramics

Edinburgh, Scotland; www.stockbridgeceramics.com
Primarily exhibiting contemporary ceramics; functional and non-functional works; representing 6 clay artists.

The Scottish Gallery

Edinburgh, Scotland; scottish-gallery.co.uk
Primarily exhibiting contemporary ceramics; functional, sculptural, figurative, installation, decorative, and domestic ware; European, Japanese, and Australian artists; representing 20+ clay artists.

Jardine Gallery and Workshop

Perth, Scotland; www.julianjardine.co.uk
Primarily exhibiting contemporary ceramics; specializes in animals, nature, and natural forms; ceramic sculpture plus functional and still life work; representing 5+ clay artists.

Fife Contemporary Art & Craft

St. Andrews, Scotland; www.fcac.co.uk
Primarily exhibiting contemporary ceramics.

Spain

Museu de Cantereria / Museo de Alfarería de Agost

Agost, Alicante; turismodeagost.com/museo-de-la-alfareria
Primarily exhibiting contemporary and historical ceramics; local, traditional pottery; pottery of Agost (Alicante, Spain), functional white clay pottery used mainly for water consumption.

Ceramics Museum Ruiz de Luna

Talavera de la Reina, Toledo; www.spain.info/en/places-of-interest/ruiz-luna-ceramics-museum
Museum in a former 17th-century convent displaying Spanish ceramics from the 14th century to the present.

Museu de Ceramica de Manises

Manises, Valencia; museumanises.es
Exhibiting historical and contemporary ceramics, 5000 pieces representing an overview of production in Manises since the 14th century and art by international artists.

Switzerland

Galerie Fur Gegenwartskunst

Bonstetten, Switzerland; ggbohrer.ch
Primarily exhibiting contemporary ceramics; sculptural and figurative works; representing 11 clay artists.

Mairie de Carouge

Carouge, Switzerland; www.carouge.ch
Primarily exhibiting historical and contemporary ceramics; functional works; ceramics from Carouge.

Baur Foundation, Museum of Far Eastern Art

Geneva, Switzerland; www.fondation-baur.ch
Primarily exhibiting historical ceramics; functional works; Chinese ceramics from the Tang (618–907 CE) to the Qing (1644–1911) dynasties, including work from the Song dynasty; representing 20+ clay artists.

Musée Ariana

Geneva, Switzerland; www.musee-ariana.ch
Primarily exhibiting historical and contemporary ceramics; functional, sculptural, figurative, and installation works; representing 200+ clay artists.

Taste Contemporary

Geneva, Switzerland; www.tastecontemporary.com
Primarily exhibiting contemporary ceramics; functional, sculptural, figurative, and installation works.

Kunstforum Solothurn

Solothurn, Switzerland; www.kunstforum.cc
Primarily exhibiting contemporary ceramics; sculptural and figurative works; representing 20 clay artists.

Taiwan

New Taipei City Yingge Ceramics Museum

New Taipei City, Taiwan, R.O.C.; academy.ceramics.ntpc.gov.tw
Primarily exhibiting contemporary and historical ceramics; sculptural and functional works.

Turkey

Sibel Sevim Exclusive

Odunpazari, Eskişehir, Turkey; www.sibelsevim.com.tr
Primarily exhibiting contemporary ceramics.

Wales

The Ceramic Gallery at Aberystwyth Arts Centre, School of Art, Aberystwyth University

Aberystwyth, Wales; www.ceramics-aberystwyth.com
Primarily exhibiting contemporary and historical ceramics; functional, sculptural, figurative, and installation works; British and international; studio pottery between 1920–1940 by Bernard Leach, Michael Cardew, Katharine Pleydell-Bouverie, Norah Braden, Charles and Nell Vyse, William Staite Murray, and Reginald Wells; ceramics from Welsh potteries including Buckley, Swansea, and Nantgarw; representing 400 clay artists.

Craft in the Bay, Makers Guild in Wales, National Museum Cardiff

Cardiff, Wales; museum.wales/cardiff
Primarily exhibiting historical and contemporary ceramics; functional works; European porcelain from the 17th–19th centuries; Welsh pottery and porcelain from Swansea and Nantgarw; contemporary ceramics; representing 100+ clay artists.

The Flourish

Cardiff Bay, Wales; www.makersguildinwales.org.uk
Primarily exhibiting contemporary ceramics; studio pottery, functional, and sculptural works; representing 30 clay artists.

The Potters Gallery (Oriol y Crochenwyr)

Conwy, Wales; thepottersgallery.co.uk
Primarily exhibiting contemporary ceramics; sculptural and functional works; contemporary ceramics and small installations; representing 18 clay artists.

Mission Gallery, Gloucester Place

Swansea, Wales; www.missiongallery.co.uk
Primarily exhibiting contemporary ceramics; functional and figurative works.