

2026 PRODUCTION SPECIFICATIONS

Pottery Making Illustrated

Advertisement Sizes

	(width x height)
2 facing pages (with bleed)	16.75" x 11.125"
Full page (with bleed)	8.5" x 11.125"
2/3 page	4.625" x 10"
1/2 page island	4.625" x 7.375"
1/2 page (vertical)	3.375" x 10"
1/2 page (horizontal)	7" x 4.875"
1/3 page (vertical)	2.25" x 10"
1/3 square	4.625" x 4.875"
1/4 page	3.375" x 4.875"
1/6 page	2.25" x 4.875"

Publication Trim Size: 8 1/4" x 10 7/8"

Bleed: 1/8" all around (Full page ads only)

Live Matter: Keep 1/4" from trim edge (Full page ads only)

Type of Binding: Saddle Stitch

Graphics Requirements

FILES: A press-quality PDF (compatible with Acrobat 6 (PDF 1.5) or greater) is preferred (with all fonts embedded). Other file formats accepted are JPEG, TIFF, EPS and most major Macintosh page-layout programs. Please do not include any printer marks.

FONTS: OpenType fonts are preferred. All fonts must be embedded in your PDF or provided with a packaged layout file.

ART: All placed images, graphics, logos, and fonts must be included.

RESOLUTION: Color art, 300 ppi. Low-resolution images will be resampled to appropriate levels as needed.

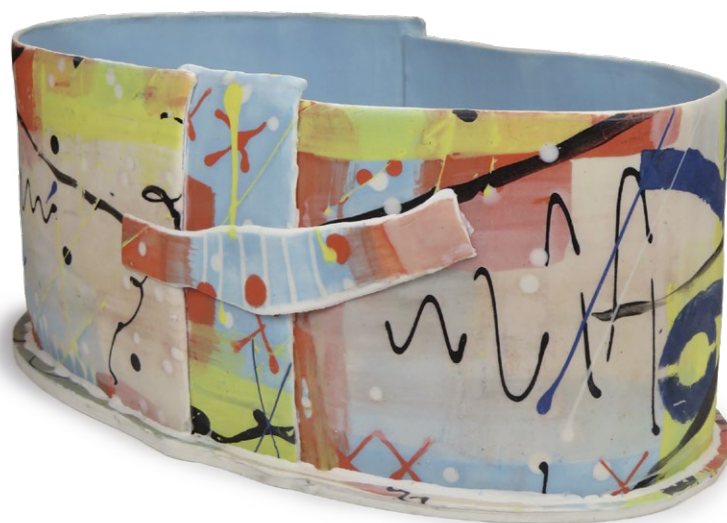
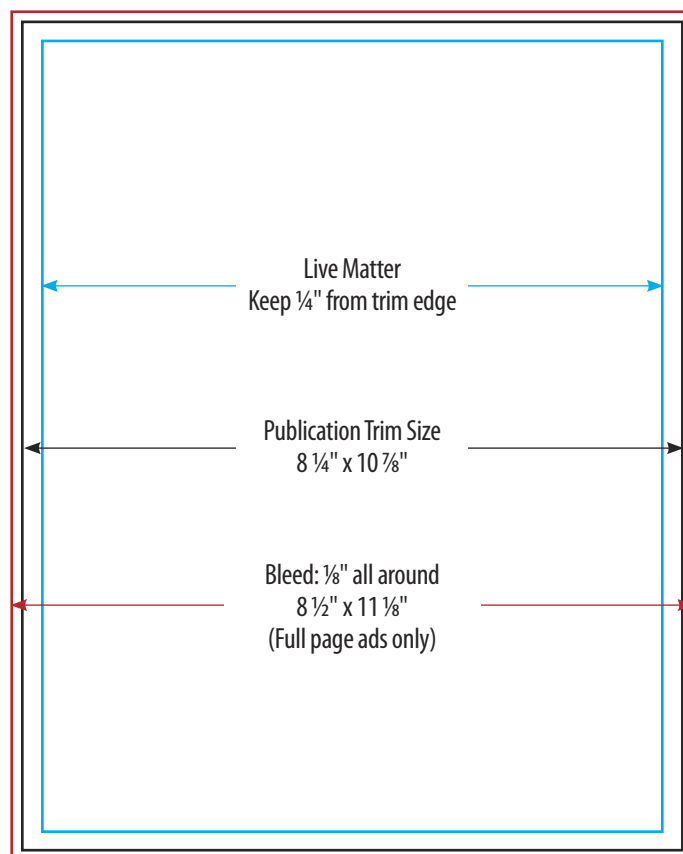
COLOR: All color images must be set to CMYK output with no ICC or CIE color profiles attached. Pantone spot colors must be converted to CMYK output. A hard-copy proof is required in order for color to be considered critical. The publisher cannot be held responsible for the reproduction quality if the proofing requirements are not met or if materials are submitted past closing date.

HALFTONES: Black-and-white files should be set to gray scale.

Files may be submitted via email or file transfer services.

Please label artwork with the Issue Date, Advertiser Name, File Name.

For proofs and file transfer instructions, contact Pam Wilson at pwilson@ceramics.org.



Donna Bloye