



Greenwich House Pottery

THE CAPITAL CAMPAIGN: REIMAGINED FOR GROWTH & ACCESSIBILITY

The Vision:

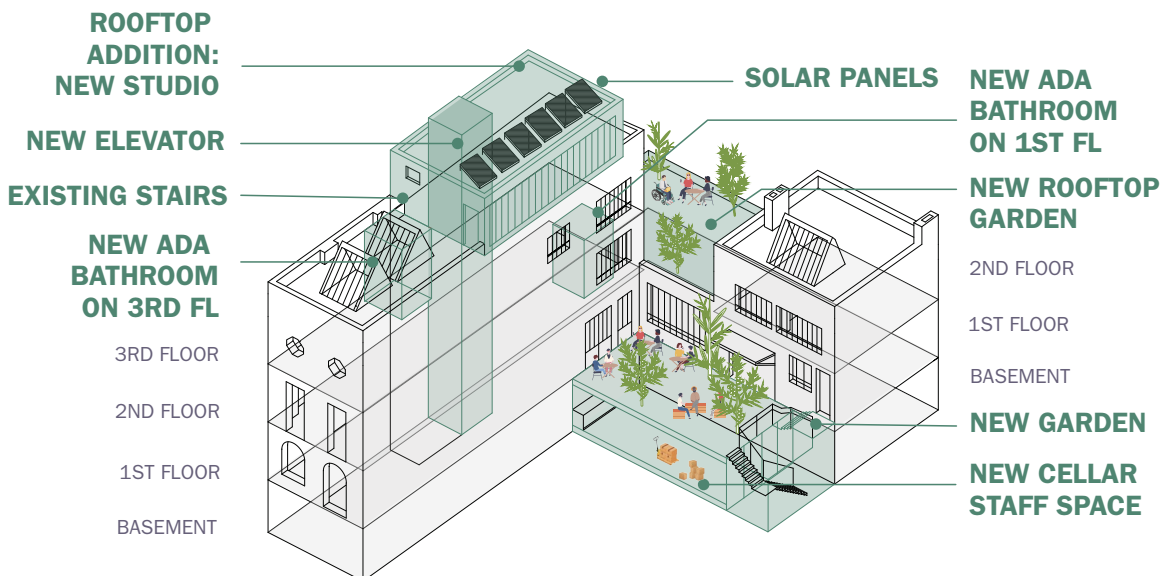
- **Increased Access & Opportunity**
Critical accessibility upgrades to be inclusive of artists of all abilities and ages
- **Capacity Building**
New classroom space and kilns to serve more artists
- **Preservation & Modernization**
Structural and functional enhancements to extend the life of an historic NYC building
- **Sustainability**
New HVAC system, insulation and solar-power to be more energy efficient

Greenwich House Pottery is a non-profit, settlement house ceramics center based in New York City serving ages 2 to 102 since 1909.

As a teaching school/gallery space/residency program, the Pottery has a long history of supporting the work of emerging and renowned teachers, students and residents, such as Peter Voulkos, Rirkrit Tiravanija, Betty Woodman, Ghada Amer, Ann Agee, Kathy Butterly, Simone Leigh and David Salle.

To learn more about Greenwich House Pottery and how to support the Shape the Future campaign, visit ghpfuture.greenwichhouse.org.

The Goal: \$5 Million



SHAPE
THE
FUTURE
OF GREENWICH
HOUSE POTTERY

