




# STONEWARE

## 2024 RELEASE




 SW214 Micro Pearl



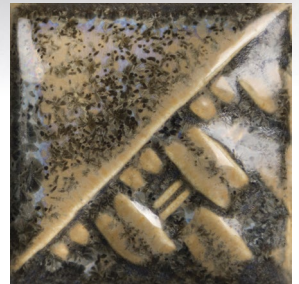
 SW215 Micro Champagne




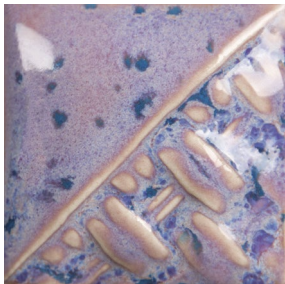
 SW216 Micro Jade



 SW217 Micro Cerulean



 SW218 Micro Ash



 SW199 Purple Aster

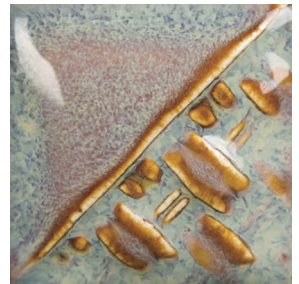
Available now at your favorite Mayco distributor in 4 oz. sample kit, liquid pints and 10 lbs. dry.


**CONE**  
**5 - 10**

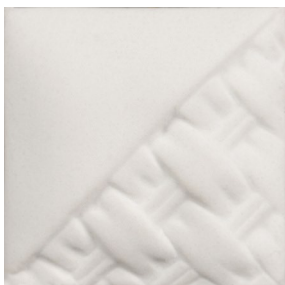
(1186°C - 1285°C)  
(2167°F - 2345°F)




CHIPS & SAMPLES FIRED TO CONE 6 (1202°C / 2194°F)



 SW219 Opal Lustre



 EG001 White Engobe



 EG002 Speckled Buff Engobe



 EG003 Brick Red Engobe



 EG004 Dark Brown Engobe



 EG005 Black Engobe