



hotkilns.com/efl

eFL Frontloading Kilns

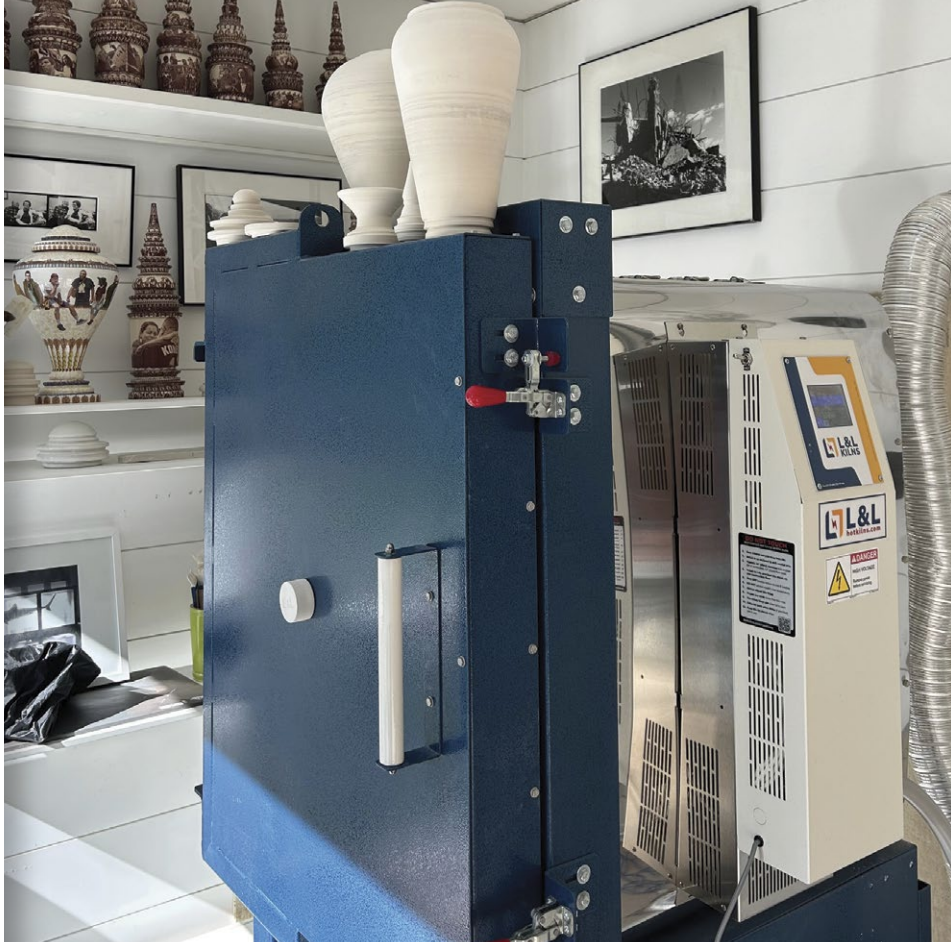
Cone 10 (2350°F • 1290°C)

Genesis Touch Screen Control

- with Kiln Aid app

Hard Ceramic Element Channels

- protect your elements and kiln



Easy to Load, Easy to Use



Peter Olson

“It has been a great experience from installation to the first firing. Having a frontloader has made a world of difference. It saves your back during loading & unloading.”

Check out his work & process at www.peterolson.me

TRUST YOUR KILN

Manufactured in Swedesboro, NJ
800-750-8350 • info@hotkilns.com

