



STONEWARE

2024 RELEASE



SW214 Micro Pearl



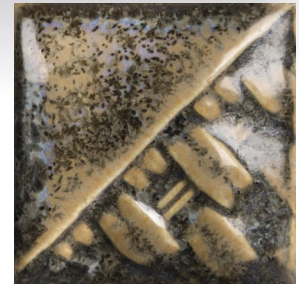
SW215 Micro Champagne



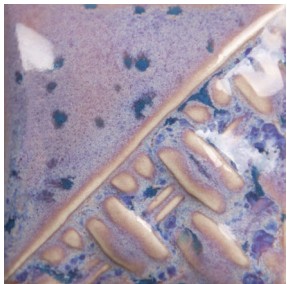
SW216 Micro Jade



SW217 Micro Cerulean



SW218 Micro Ash



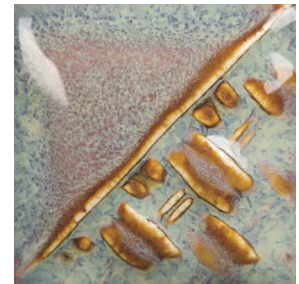
SW199 Purple Aster

Coming soon to your favorite
Mayco distributor in 4 oz. sample
kit, liquid pints and 10 lbs. dry.

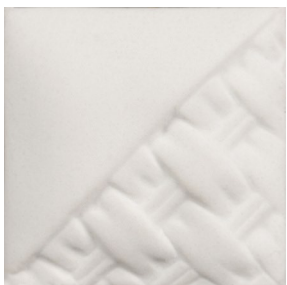
CONE
5 - 10
(1186°C - 1285°C)
(2167°F - 2345°F)



CHIPS & SAMPLES FIRED TO CONE 6 (1202°C / 2194°F)



SW219 Opal Lustre



EG001 White Engobe



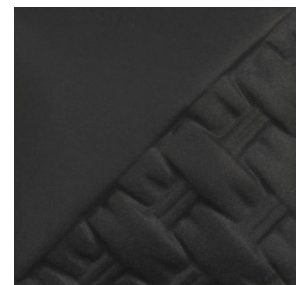
EG002 Speckled Buff Engobe



EG003 Brick Red Engobe



EG004 Dark Brown Engobe



EG005 Black Engobe