

2019 summer workshops

summer workshops 2019



Annual udu drum workshop with participants (left) and instructor Abbas M. Ahuwan (right) at Udu Inc. in Freehold, New York, 2016.

Alabama, Fairhope

"Pinched in a cinch!" with Didem Mert (September 7–8). Fee: \$250. Contact Susie Bowman, The Kiln Studio and Gallery; info@thekilnstudio.com; www.thekilnstudio.com; 251-517-5460.

Arizona, Flagstaff

"Wood Fire Workshop with Jason Hess," (July 15–26). Fee: \$1400. Contact Jason Hess, Northern Arizona University; jason.hess@nau.edu; www.nau.edu/ceramics; 928-699-8984.

Arkansas, Eureka Springs

"The Human Figure: Proportion and the Maquette," with Misty Gamble (June 10–14). Fee: \$495.
"The Art of Mud 101," with Sheri Cunningham and Cathrin Yoder (July 8–12). Fee: \$395.
"Clay for the Garden," with Donna Doss (three individual Saturdays, July 13, 20, 27). Fee: \$235. Contact Kelly McDonough, Eureka Springs School of the Arts; director@essa-art.org; www.essa-art.org; 479-253-5384.

California, Berkeley

"Let's Talk—A Conversation Between Form and Imagery," with Kathy King (June 8–9). Fee: \$250.
"Happiness Is A Warm Extruder," with Hayne Bayless (July 27–28). Fee: \$250.
"Sculpting the Human Figure," with Michelle Gregor and Debra Fritts (August 17–20). Fee: \$575. Contact Kimberly Keyworth, The Potters' Studio; kimkey@sonic.net; www.berkeleypottersstudio.com; 510-205-1146.

California, Grass Valley

"Upgrade Your Throwing Skills With Chic Lotz—Level 1," with Chic Lotz (June 3–7). Fee: \$300–350.

"Upgrade Your Throwing Skills With Chic Lotz—Level 2," with Chic Lotz (June 10–14). Fee: \$300–350.

"Upgrade Your Throwing Skills with Chic Lotz—Level 1," with Chic Lotz (June 3–7). Fee: \$300–350.

"Upgrade Your Throwing Skills with Chic Lotz—Level 2," with Chic Lotz (June 10–14). Fee: \$300–350.

"Glaze Basics for Developing Color and Surface," with Chic Lotz and Flo Fahrenheit (June 24–28). Fee: \$425–\$475. Contact Chic Lotz, The Potters Wheel; Chic@PotteryPoet.com; www.ChicLotzPottery.com; 530-274-8185.

California, Idyllwild

"Hot Clay (4 separate weeks, June 9–July 6)," with 13 instructors in total, please see website. Fee: \$755. Contact Idyllwild Arts Summer Program; admission@idyllwildarts.org; www.idyllwildarts.orgsummer; 951-468-7265.

California, Long Beach

"Ceramics and Satoyama in Japan," with Dr. Bradley Monsma and Hikaru Hyuga (June 3–24). Fee: varies. Contact Remy Mason, CSU Summer Arts; rmason@calstate.edu; www2.calstate.edu/SummerArts/Courses/Pages/Ceramics.aspx; 562-951-4059.

California, Mendocino

"Sculpture's a Beach," with Craig M. Black (June 7–9). Fee: \$300.

"Alternative Building and Finishes: Stretching the Creative Process," with Rocky Lewycky (June 17–23). Fee: \$715.

"Wood-Fire Workshop," with Mendocino Art Center Ceramics Staff (June 25–30). Fee: \$300.

"Complex Sectional Vessels," with Steve Loucks and Lynnette Hesser (June 28–30). Fee: \$320.

"Creating Sounds with Clay," with Brian Ransom (July 1–7). Fee: \$720.

"Atmosphere: Soda and Salt Firing," with Ian Hazard-Bill (July 11–14). Fee: \$400.

"Creating a Mosaic," with Ron Ortman (July 17–20). Fee: \$400.

"An Improvisational Approach Through Form and Surface," with Michelle Gregor (July 22–26). Fee: \$550.

"Animal Portrait Sculpting," with Wesley Wright (July 27–28). Fee: \$250.

"The Tower of Babel: Structural Ceramic Sculpture," with Annakarin Kraus (July 30–August 3). Fee: \$520.

"Expressive Platters," with Gregory Byard (August 5–6). Fee: \$220.

"Porcelain Paperclay Flowers," with Malia Landis (August 10–11). Fee: \$200.

"Handbuilding: Tricks of the Trade," with Vince Pitelka (August 19–23). Fee: \$600.

"Throwing Out of the Round: Advanced Throwing Techniques," with Ian Hazard-Bill (August 30–September 1). Fee: \$320. Contact Mike McDonald, Mendocino Art Center; register@mendocinoartcenter.org; www.mendocinoartcenter.org; 707-937-5818.

California, Ojai

"Lusterglazes Unveiled," with Myra Toth (June 21–23). Fee: \$550. Contact Myra Toth, Pyramid Studio; Radtoth@aol.com; www.pyramidstudio.com; 805-646-7752.

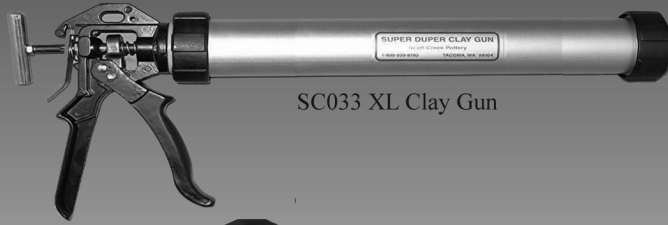
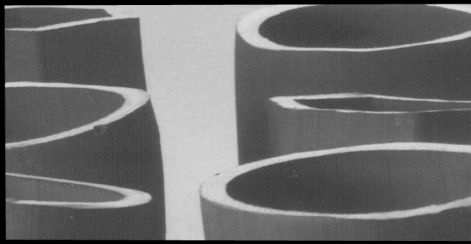
California, Pomona

"Rodney Mott—Hands On Workshop," (June 15–16). Fee: \$300. Contact Zachery Hould, Ceramics Studio at AMOCA; studiomanager2@amoca.org; http://amoca.shoplightspeed.com/ceramics-studio/workshops-demos-adult/summer-2019; 909-622-0464.

Continued on page 66.

Scott Creek Extruders

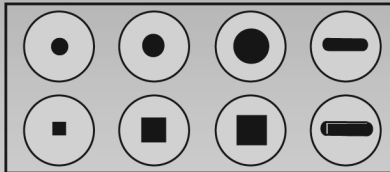
2636 Pioneer Way East
Tacoma Wa 98404
800-939-8783
Fax 253-922-5349
www.scottcreekpottery.com



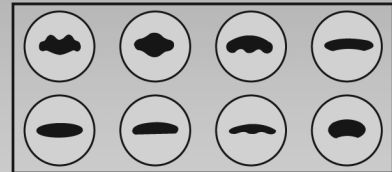
SC033 XL Clay Gun



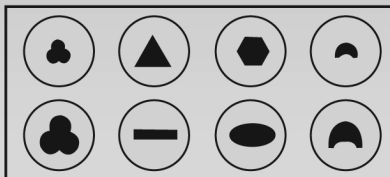
SC001 Clay Gun



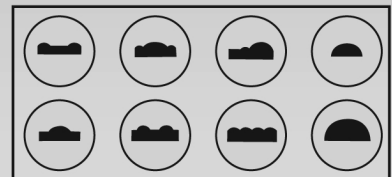
SC002 Clay Gun Die Kit



SC034 Clay Gun Handle Die



SC035 Clay Gun Shape and Coil Set



SC036 Clay Gun Tile Trim Set

STUDIO SOLUTIONS... REACH FOR THE STARS!

NORTH STAR EQUIPMENT, INC.



VersaCab
Drying/ Damp Cabinets



Studio Work Tables



Shelf Trucks



Universal Bat System
(w/ 9 inserts)



Slab Roller /Work Table
(Tool free conversion)



Wedgit!

Ask us about our Throwing Bats & Custom Dies.
Visit Your Local Dealer


Come visit us on facebook!

NORTH STAR EQUIPMENT, INC. • 1-800-231-7896
www.northstarequipment.com

LEARN, CREATE, BUILD,
DISCOVER, EXPLORE AND
GROW AT ARROWMONT

**WEEKEND, ONE-WEEK AND
TWO-WEEK WORKSHOPS**

Register online at arrowmont.org
or call 865-436-5860



ARROWMONT
school of arts and crafts

California, San Francisco

"Sarah Pike Demonstration Workshop," (three dates, August 9, 10, 11). Fee: \$220 for non sfwc members. Contact Nina Saltman, sfclayworks; sfclayworks@att.net; www.sfclayworks.com; 415-647-CLAY.

Colorado, Grand Junction

"Ruth Wilson's Fantasy World: Sculpture," (August 17, 18, 24). Fee: \$275. Contact Matthew Jones, The Art Center; mjones@gjartcenter.org; www.gjartcenter.org; 970-243-7337.

Colorado, Snowmass Village

"Fresh and Invigorating: handbuilt pottery," with Holly Walker (June 3-7). Fee: \$975.
 "Digitally Fabricated Molds," with Del Harrow (June 3-14). Fee: \$1195.
 "Pottery: vessels for food," with Sanam Emami (June 3-14). Fee: \$1195.

"Skin Deep: ceramic overglaze surfaces," with Lauren Gallaspy (June 10-14). Fee: \$975.

"The Hamada Leach Tradition: pottery making," with Tomoo Hamada and Simon Leach (June 15-16). Fee: \$575.

"Rich Surfaces: drawing with clay and painting with glaze," with Lisa Orr (June 17-28). Fee: \$1195.

"Artistic Voice: the ceramic journey," with Doug Casebeer and Giselle Hicks (June 17-21). Fee: \$1175.

"Clay Sculpture: large-scale systems," with Matt Wedel (June 24-July 5). Fee: \$1195.

"Hollow Core Construction: figurative sculpture," with Bobby Scroggins (July 1-12). Fee: \$1195.

"Diamonds on Clay," with Michael Sherrill (July 8-19). Fee: \$1395.

"The Ceramic Mural," with John Toki (July 15-26). Fee: \$1195.

"Pottery: form as canvas," with Michael Kline (July 22-August 2). Fee: \$1195.

"By Design: prototype development and mold making," with Hiroe Hanazono (July 29-August 9). Fee: \$1195.

"Sculpture: clay, wood and steel," with Trey Hill (August 5-16). Fee: \$1195.

"Alternative Processes in Clay," with Kate Roberts (August 12-23). Fee: \$1195.

"Advanced Mentored Studies Program," with Kate Roberts (August 12-23). Fee: \$1195.

"The Eloquent Vessel: sculpture and pottery," with Chris Gustin and Randy Johnston (August 12-16). Fee: \$1375.

"Surreal Attitudes: the figure in clay," with Lisa Clague (August 19-30). Fee: \$1195.

"Make, Make, Make: pottery boot camp," with Sam Harvey and Alleghany Meadows (August 26-30). Fee: \$975.

"Ceramic Resin Printing," with Liz Heller (August 26-30). Fee: \$975.

"Focus on Function: the atmospheric canvas," with Lorna Meaden (September 9-27). Fee: \$1475. Contact Louise Deroualle, Anderson Ranch Arts Center; lderoualle@andersonranch.org; www.andersonranch.org; 970-923-3181.

Connecticut, Canton

"The Raku Journey," with Tim Scull (June 7-9). Fee: \$310.

"Exploration in Saggar and Sawdust Fired Pottery," with Tim Scull (July 12-14). Fee: \$310. Contact Tim Scull, Creamery Gallery, Canton Clay Works LLC; cantonclayworks@yahoo.com; www.cantonclayworks.com; 860-693-1000.

Connecticut, South Kent

"Glaze Buffet," with Fong Choo (May 31-June 3). Fee: \$415.

"A Ceramic Workshop," with Tomoo Hamada (June 10-11). Fee: \$235.

"Altered Elegance," with Martha Grover (June 14-17). Fee: \$400.

"Exploring Narrative Surface Design," with Sue Tirrell (July 12-15). Fee: \$415.

"Surface Decoration," with Alison Palmer and Karen Snyder-Kadish (July 27-28). Fee: \$210.

"Expressive Throwing," with Tony Clennell (August 2-6). Fee: \$500.

"Throwing with Purpose," with Steve Théberge (August 17-18). Fee: \$210.

"A Brushmaking Workshop," with Troy Bungart (August 24-25). Fee: \$210. Contact Alison Palmer, The Alison Palmer Studio; spoonrest@icloud.com; https://alisonpalmerstudio.com/clay-2; 860-927-4680.

Connecticut, Woodbridge

"Pyranha-Gama Firing Summer 2019," with Trevor Youngberg and Eileen Sackman of Monmouth University. (June 24-29). Fee: \$350 for two 12x24-inch kiln shelves. Contact Trevor Youngberg, Youngberg Productions LLC; TrevorYoungberg@gmail.com; http://TrevorYoungberg.com; 203-641-0211.

Georgia, Cave Spring

"Making Pots That Work, Pour, and Embody Elegance," with John Johnston and Mike Burton (June 15-16). Fee: \$200. Contact John Johnston, Booger Hollow Studios; john9897@bellsouth.net; www.boogerhollowstudios.com; 706-777-8546.

Indiana, Indianapolis

"Mold Making and Slip Casting," with Kira Kalondy (June 8-9). Fee: \$150.

"Italian Inspired Majolica with Velvet Underglazes," with Susan Snyder (July 27-28). Fee: \$150. Contact Kira Kalondy, Brickyard Ceramics & Crafts; customerservice@brickyardceramics.com; www.brickyardceramics.com; 800-677-3289.

Maine, Deer Isle

"Pinching and Playing," with Emily Schroeder Willis (June 9-21). Fee: \$1085+housing/shop fees.

"Drawing Out Loud," with Shannon Goff (June 23-July 5). Fee: \$1085+housing/shop fees.

"Everyday Abstraction with Colored Porcelain," with Linda Nguyen Lopez (July 14-26). Fee: \$1085+housing/shop fees.

"Soda Salt Surface," with Kenyon Hansen (July 28-August 9). Fee: \$1085+housing/shop fees.

"South African Vessels," with Andile Dyalvane (August 11-23). Fee: \$1085+housing/shop fees.

"Altering Form/Designing Surface," with Suze Lindsay (August 25-31). Fee: \$580+housing/shop fees. Contact Ginger Aldrich, Haystack Mountain School of Crafts; haystack@haystack-mtn.org; www.haystack-mtn.org; 207-348-2306.

Maine, Newcastle

"Guest Artist Workshop with Past Salad Days Artists," with Stuart Gair, Kari Radasch, Patrick Coughlin, and more (July 11). Fee: \$85. Contact Claire Brassil, Watershed Center for Ceramic Art; cbrassil@watershedceramics.org; http://watershedceramics.org; 207-882-6075.

Maine, Portland

"Throwing and Altering," with Lori Watts (May 18). Fee: \$65. Contact Karen DiCenso, Portland Pottery Supply & Studio; karend@portlandpottery.com; www.portlandpottery.com; 207-772-4334.

Maryland, Frederick

"Special Topics in Ceramic Arts," with Shiro Otani (June 7-9). Fee: \$225.

"Throwing Large Forms," with Kevin Crowe (June 24-29). Fee: \$750.

"Wood Firing Theory," with Joe Delphia (July 10-14). Fee: \$750.

"Ceramic Sculpture," with Kevin Rhode (July 15-26). Fee: \$750.

"Ceramic Wheel: Masters' Throwing Concepts," with Kristin Muller (August 1-4). Fee: \$400.

"Soda Firing Theory," with Jenna Gianni (August 7-11). Fee: \$400. Contact Corey Shultz, Hood College; shultzc@hood.edu; secure.hood.edu/ceramics; 301-696-3531.

Massachusetts, Boston

"From Form to Fire," with Bob Green (July 28-August 3). Fee: \$1075. Contact Jackie Knight, Art New England/Massachusetts College of Art and Design; jknight@massart.edu; www.massart.edu/ane; 617-879-7164.

Massachusetts, Truro

"Nature Tradition: Cultivating Inspirations in Clay," with Adam Field (June 17-20). Fee: \$650.

"Onggi: Ancient Korean Pottery Techniques," with Adam Field (June 21). Fee: \$175.

"June Wood-Firing," with Hideo Mabuchi and Chris Watt (June 23-29). Fee: \$370.

"Raku Workshop: A Unique Firing Experience," with Lois Hirschberg (June 24-28). Fee: \$455.

"Fresh Approaches to Functional Pots: Throwing, Altering, and More," with Gertrude Graham Smith (July 1-5). Fee: \$455.

"Wheel Throwing Basics," with Brian Taylor (July 8-12). Fee: \$455.

"One Week Workshop," with William Baker (July 15-19). Fee: \$455.

"Alternative Approaches to Slab Construction and Soft Coil Building," with Jeff Shapiro (July 22-26). Fee: \$455.

"Parts of a Whole: Explorations in Form and Fire," with Candice Methe (July 29-August 2). Fee: \$455.

"See, Make, Know, Believe," with Mark Shapiro and Sam Taylor (August 5-8). Fee: \$555.

"Pottery for Foodies," with Lucy Fagella (August 12-16). Fee: \$455.

"Pots on the Wheel," with Paul Wisotzky (August 19-23). Fee: \$455.

"The Contemporary Art of the Drink," with Seth Rainville (August 26-30). Fee: \$455. Contact Truro Center for the Arts; chriswatt@castlehill.org; www.castlehill.org/ceramics.

Massachusetts, Williamsburg

"Layer, Color and Pattern on the Clay Form," with Adero Willard (June 9-16). Fee: \$1025.

"Moldmaking and Slipcasting Intensive," with Geoffrey Booras (June 21-July 15). Fee: \$495.

"Carbon Trapped Soda Firing and More," with Matthew Schiemann (August 1-10). Fee: \$1305.

"Painting with Fire: Native American Firing Techniques and More," with Robert Green (August 11-17). Fee: \$685.

"Going Organic in Clay," with Leslie Ferst (August 25-31). Fee: \$695.

"The Exquisite Ceramic Surface," with Hayne Bayless (August 31-September 2). Fee: \$430. Contact Miriam Cody, Snow Farm: The New England Craft Program; info@snowfarm-art.org; www.snowfarm.org/workshops/topics/layer-color-pattern-clay-form; 413-268-3101.

Michigan, Glen Arbor

"Marks on Clay: Slip, Sgraffito, Overglaze, and More," with John Huston (June 21-23). Fee: Before May 20. \$200 for members and \$210 for non-members including many meals. Rates go up after May 20. Contact Sarah Kime, Glen Arbor Arts Center; director@glenarborart.org; www.glenarborart.org; 231-334-6112.

Michigan, Saugatuck

"Remix: Clay and Print," with Thomas Lucas and Roberto Lugo (June 2-15). Fee: \$1350, additional housing fee.

"Power Objects and Alter-Egos," with Anthony Sonnenberg and Joanna Powell (June 30-July 13). Fee: \$1350, additional housing fee.

"Materials and Mechanics of Woodfire," with Ashwini Bhat and Bruce Dehnert (July 14-27). Fee: \$1350, additional housing fee.

"The Formal, The Experimental, The Unexpected: New Investigations in Clay," with Marie Herwald Herrmann and Anders Ruhwald (July 28-August 10). Fee: \$1350, additional housing fee. Contact Annie Fisher, Ox-Bow School of Art and Artists' Residency; ox-bow@saic.edu; www.ox-bow.org; 800-318-3019.

Mississippi, Biloxi

"T-Pots Too! Continued Explorations into a Versatile Form," with Jake Ollinger (July 20, 10am-5pm). Fee: \$170.

"T-Pots Too! Continued Explorations into a Versatile Form," with Jake Ollinger (July 21, 10am-5pm). Fee: \$170/per student (2 separate dates). Contact Nathen Lytle, Ohr-O'Keefe Museum of Art; community@georgeohr.org; www.georgeohr.org; 228-374-5547.

Mississippi, Natchez

"Throwing and Altering Clay Vessels," with Conner Burns (July 1-5). Fee: \$681.

"Making Wine Vessels," with Conner Burns (August 17-18). Fee: \$275. Contact Conner Burns, Conner Burns Studio and Gallery; studioburns@aol.com; www.connerburns.com; 601-446-6334.

Continued on page 68.

IDYLLWILD ARTS

HOT CLAY WORKSHOPS

June 9 - July 6, 2019



THADDEUS ERDAHL - LORD CARDIGON

Summer Faculty:

Richard Burkett

Gail Kendall

Bill Griffith

Kevin Rohde

Gwendolyn

Victoria Christen

Yoppolo

Steven Hill

David Delgado

Thaddeus
Erdahl

Adrienne
Eliades

Native American pottery
courses also available

Register Now!

idyllwildarts.org/hotclay

summer@idyllwildarts.org

951.468.7265



We're Wide-Opened to New Ideas!



800.241.4400



OLYMPIC KILNS

www.greatkilns.com

XIEM TOOLS^{USA}

NCECA BOOTH
520-522

TITANIUM-FUSED
TRIMMING TOOL



DOUBLE-EDGE
SCULPTURE
RAKE



VISIT OUR WEBSITE TO
SEE A FULL LINE OF
BOTH TOOLS

XIEMTOOLSUSA.COM

LA MERIDIANA

INTERNATIONAL SCHOOL OF CERAMICS



Inspiring Potters since 1981



Workshops in Tuscany for all levels,
with Italian & international artists.

www.lameridiana.fi.it

Mississippi, Saltito

"Understanding Porcelain Hands-on Workshop," with Antoinette Badenhorst (June 19–23). Fee: \$460. Contact Antoinette Badenhorst, Porcelain by Antoinette; PorcelainbyAntoinette@gmail.com; https://porcelainbyantoinette.com/index.html; 662-607-0533.

"Pinching Teapots for Beginners Online Workshop," with Antoinette Badenhorst (June 3–6). Fee: \$35.

"Wheel-thrown Porcelain Dinnerware Online Workshop," with Antoinette Badenhorst (June 3–July 11). Fee: \$189.

"China Painting with Paul Lewing," (June 10–July 18). Fee: \$220.

"Shino Glazing," with Connie Christensen (June 24–July 18). Fee: \$135.

"Handbuilding Porcelain Dinnerware Online Workshop," with Antoinette Badenhorst (June 24–August 1). Fee: \$189.

"Alternative Firing Online Workshop," with Marcia Selsor (July 1–August 8). Fee: \$189.

"Post-fired Finishes," with Marie EvB Gibbons (July 8–August 1). Fee: \$135.

"Glazing Made Easy," with Antoinette Badenhorst (July 8–August 22). Fee: \$220.

"Colored Clay Online Workshop," with Curtis Benzle (July 22–August 29). Fee: \$189.

"Take Your Throwing to the Next Level," with Nan Rothwell (August 5–September 12). Fee: \$189. Contact Jacobus Badenhorst, TeachinArt; Koos.Badenhorst@gmail.com; https://teachinart.com/alternative-firing.html; 662-607-0533.

Montana, Helena

"The Crafted Pot: Cultivating Curiosities," with Simon Levin and Linda Christianson (June 2–8). Fee: \$875.

"Clay and Plaster: Design and Production of Relief Tiles," with Richard Notkin (July 7–13). Fee: \$1000.

"Spraying and Layering Glazes," with Lauren Smith (July 17–20). Fee: \$395.

"Human Figure: Head, Hands, and Feet," with Richard W. James (July 22–26). Fee: \$565.

"Plaster Mold Design and Production," with Jeremy Hatch (August 5–9). Fee: \$800.

"Understanding Soda Firing," with Stuart Gair (August 12–16). Fee: \$600.

"Indelible: Storytelling In, On, and With Clay," with Sue Tirrell and Carole Epp (September 26–29). Fee: \$525.

"The Art of Learning: Finding Your Creative Voice," with Chris Staley (June 1). Fee: \$100. Contact Amanda Wilkey, Archie Bray Foundation for the Ceramic Arts; amanda@archiebray.org; http://archiebray.org; 406-443-3502.

Nevada, Henderson

"Tom Coleman Slip, Glaze, and Fire Workshop," with Tom Coleman (July 8–13). Fee: \$1000.

"Tom Coleman Slip, Glaze, and Fire Workshop," with Tom Coleman (September 8–13). Fee: \$1000. Contact Amy Kline, Kiln Glaze Service; amy@klineglazeservice.com; www.klineglazeservice.com; 702-845-1715.

Nevada, Incline Village

"Fast Action Handbuilding: Expressive, Narrative Sculpture with Animals," with Jeff Downing (June 10–14). Fee: \$549.

"Fast Fire Pottree: Alternative Firing Methods," with Randy Broadnax and Don Ellis (June 17–21). Fee: \$549.

"Functionally Divergent: A Tale of Two Potters," with Randy Broadnax and Don Ellis (June 24–28). Fee: \$549.

"Line and Gesture with Porcelain," with Matt Long (July 8–12). Fee: \$549.

"Merging Clay and Glass," with Helen Otterson (July 15–19). Fee: \$549.

"Loosen Up and Break the Rules," with Nick Schwartz (July 20–21). Fee: \$249.

"New Frontiers: Paper Clay Construction," with T Robert Pacini (July 22–26). Fee: \$549. Contact Sheri Leigh O'Connor, Sierra Nevada College Fine Arts Dept.; sleigh@sierranevada.edu; www.sierranevada.edu/workshops; 775-881-7588.

New Jersey, Layton

"Hold the Salt!" with Bruce Dehnert (May 31–June 2). Fee: \$495.

"The Narrative Vessel," with Kevin Snipes (June 7–11). Fee: \$670.

"Firing the Noborigama," with Shiro Otani (June 14–21). Fee: \$985.

"From Start to Finish: Cone-2, Soda-Fired Red Earthenware," with Tom Jaszczak (June 28–July 2). Fee: \$685.

"The Big Burn," with Bruce Dehnert and Steve Cook (July 5–9). Fee: \$720.

"Just Add Plaster: Mold Making for Ceramics," with Seth Nagelberg (July 12–16). Fee: \$705.

"Making While Soda Firing," with Lorna Meaden (July 19–23). Fee: \$690.

"Altered Throwing: Drawing Clay," with Malcolm Mobutu Smith (July 26–30). Fee: \$675.

"Making work for the Anagama: Painting with Fire," with Nick Schwartz and John Dix (August 9–13). Fee: \$650.

"Between a Ball and a Pyramid," with Jenny Lynn McNutt (August 2–5). Fee: \$580.

"Firing the Anagama: Painting with Fire," with Nick Schwartz and John Dix (August 13–20). Fee: \$1015.

"Together at the Wheel: Pottery for Teens and Adults," with Bonnie Hull (August 31–September 1). Fee: \$370. Contact Jennifer Appgar, Peters Valley School of Craft; jen@petersvalley.org; www.petersvalley.org; 973-948-5200.

New Mexico, Abiquiu

"Primitive and Paper Clay," with Barbara Campbell (July 7–13). Fee: \$675–\$1540, including lodging.

"Playing with Fire: Raku Elements," with Barbara Campbell (July 14–20). Fee: \$675–\$1540, including lodging.

"Palm Spirits and Totems: Bringing Clay to Life," with Doug DeLind (July 21–27). Fee: \$675–\$1540, including lodging. Contact Ghost Ranch Education and Retreat Center; marketing@ghostranch.org; www.ghostranch.org; 505-685-1000.

New Mexico, Rancho de Taos

"Equine Sculpture," (June 17–21). Fee: \$640.

"Donkey Sculpture," (July 28–August 2). Fee: \$740. Contact Ursula Beck, Taos Art School; tas@taosartschool.org; www.taosartschool.org; 575-758-0350.

New Mexico, Santa Fe

"Making In Multiples," with Brian Kluge (June 3–7). Fee: \$975.

"Face Dances," with Pattie Chalmers (June 10–14). Fee: \$975.

"Human Figure: Form and Function," with Amy Smith (June 17–21). Fee: \$975.

"Functional Pottery: Utility and Sculpture," with Eric Van Eimeren (June 24–28). Fee: \$975.

"Pump Up the Volume," with Chris Pickett (July 8–12). Fee: \$975.

"Testing Porcelain's Limits," with Jennifer McCurdy (July 15–19). Fee: \$975.

"Sculpting Memory," with Kensuke Yamada (July 22–26). Fee: \$975.

"Geometric Harmony," with José Sierra (August 5–9). Fee: \$975.

"Picture That," with Adam Shrewsbury (August 19–23). Fee: \$975. Contact Mark Grischke, Santa Fe Clay; mark@santafeclay.com; https://santafeclay.com; 505-984-1122.

New Mexico, Silver City

"Exploring Functional Hand Building," with Sunshine Cobb (July 8–19). Fee: \$850.

"China Painting," with Brad Klem (July 16–19). Fee: \$500. Contact Clay Festival; info@swnmact.org; https://clayfestival.com; 575-538-5560.



Participants from a ceramics workshop at Anderson Ranch Arts Center in Snowmass Village, Colorado.

Nevada, Las Vegas

"Spectrum Glaze Workshop," with Spectrum Glaze (May 4–5). Fee: \$160.

"Martha Grover Hand-on," with Martha Grover (June 29–30). Fee: \$160.

"Get Your Luster On," with Nathan Bray (August 3–4). Fee: \$160. Contact Thomas Bumblauskas, Clay Arts Vegas; 4information@clayartsvegas.com; www.clayartsvegas.com; 702-375-4147.

Nevada, Tuscarora

"Summer 2019 Clay and Soda Firing Workshops," with Jerry Hendershot, Ben Parks, Elaine Parks (July 5–August 1). Fee: \$1500. Contact Jerry Hendershot, Tuscarora Pottery School; jerryhendershot@tuscarorapottery.com; www.tuscarorapottery.com; 208-863-4532.

New Hampshire, Orford

"Ceramics: Sketch and Stretch: Hand Building and Surface Intensive," with Chandra DeBuse (July 19–21). Fee: \$450.

"Glass Casting Techniques—Integrating Glass and Ceramic Sculpture," with Helen Otterson (July 26–28). Fee: \$450.

"Sculpture: Building Solid, Hollowing, Carving and Mixed Media," with Brian Somerville (August 9–11). Fee: \$450.

"Sculpture: The Human Animal Connection," with Debra Fritts (August 26–30). Fee: \$800. Contact Blackberry Hill Art Center; dianne@blackberryhillartcenter.com; www.BlackberryHillArtCenter.com; 603-353-4312.

**Heartwood Mountain
Sanctuary**



**2019 Course Offerings
with George Lea**

Three Week Surface Design
Intensives

May 5th-25th & July 7-27th

Four Month Foundation Level
Ceramics Course

Aug. 10th thru Dec. 15th

For more information email us at:
art@heartwoodhub.com or visit:
heartwoodhub.com/about/art-department/
Heartwood Mountain Sanctuary, 220
Harmony Lane, Garberville, CA 95542

AARDVARK
Clay & Supplies
Need it? Got it.

714-541-4157
www.AardvarkClay.com

**OFF THE SHELF
OUTSIDE THE BOX**
A Guide to Experimenting with
Commercial Clays, Glazes, & Underglazes

**Think
Outside the
Box with
Commercial
Products!**

Deanna Ranlett
explores the nuances
of commercial clays, glazes,
underglazes, and more, as well
as the variety of results that can be achieved
with these products. If you are interested in
these versatile, convenient and easy-to use
products, this book is the perfect place to get
started. You will love the results!

**NEW
BOOK!**

CERAMIC ARTS NETWORK
To learn more or purchase, visit
CERAMICARTSNETWORK.ORG/SHOP

Workhouse
ARTS CENTER
Ceramics Program
Classes • Exhibits • Workshops • Residency Program

**Upcoming Exhibitions &
Workshops**

**2019 Workhouse Clay
International Exhibit**
Juror-Peter Beasecker
August 10- October 13, 2019
Apply Online by May 15, 2019
www.juriedartservices.com

Jeremy Jernegan
Exhibit: April 15-May 31, 2019
Workshop: June 1, 2019

Martha Grover
Exhibit: Sept. 28-Oct. 27, 2019
Workshop: October 26-27, 2019

NCECA 2020 Pre-Conference
DeWeese & Gustin Workshop
March 19-24, 2020

9518 Workhouse Way, Lorton, VA 22079
WorkhouseArts.org | 703-584-2900
dalemahanka@workhousearts.org

Highwater Clays

**Versatile
Responsive
Dependable**

The company that keeps you in mind.
Think of us for all your ceramic needs.

Highwater Clays
Asheville NC • Clearwater FL
highwaterclays.com

New York, Freehold

"30th Annual Udu Drum Workshop," with Frank Giorgini and Abbas M. Ahuwan (July 6, 7, 8, and 13). Fee: \$450. Contact Frank Giorgini, Udu Inc.; frank@udu.com; www.udu.com; 518-634-2559.

New York, Maplecrest

"Fun With Vessels That Pour," with Susan Beecher (June 28–30). Fee: \$275+\$35 materials fee.
 "Making Pottery; Developing Your Sense of Touch," with Josh DeWeese (July 1–23). Fee: \$485+\$45 materials fee.
 "Sensational Salt Firing," with Susan Beecher, Meredith and Harry Kundardt (July 5–7). Fee: \$275+\$45 materials fee.
 "Finding Your Vision," with Jeff Oestreich (July 11–15). Fee: \$485+\$35 materials fee.
 "Creating with Paper Clay," with Lisa Chicoyne (July 12–15). Fee: \$435+\$45 materials fee.
 "Expressive Sculpture with Slab and Coil," with Tania Kravath (July 19–21). Fee: \$265+\$35 materials fee.
 "Special Effects with Raku and Salt Firing," with Randy Brodnax and Don Ellis (July 25–30). Fee: \$485+\$48 materials fee.
 "Basics and Beyond—weekly," with Susan Bogen (June 26–August 28). Fee: \$250+\$35 materials fee.
 "Decorating for Mid and Low Range Firing," with Kate Misset (August 1–5). Fee: \$435+\$35 materials fee.
 "Mixed Media Mosaics," with Amy Marks (August 2–4). Fee: \$275+\$30 materials fee.
 "Altered Forms and Textured Surfaces," with Jennifer Allen (August 8–13). Fee: \$475+\$45 materials fee.
 "Multi-Layered Surface for Mid-Range," with Renee LoPresti (August 15–20). Fee: \$475+\$45 materials fee.
 "Gorgeous Beaded Bracelets," with Marsha Davis (August 17–18). Fee: \$225+\$70 materials fee.
 "Creating with Colored Clay," with Chris Cambell (August 22–26). Fee: \$475+\$25 materials fee. Contact Susan Beecher, Sugar Maples Center for the Arts; beechers60@earthlink.net; www.sugarmaples.org; 518-263-2001.

New York, Middlesex

"Folk Art Guild Craft Weekend 2019—Listening to the Clay," with Annie Schliffer and Claire Willis (July 11–14). Fee: \$525 residential, \$335 commuter. Contact Annie Schliffer, Rochester Folk Art Guild; pottery@folkartguild.org; www.folkartguild.org; 585-554-5463.

New York, New York

"Summer Master Series Workshop: Ibrahim Said," (July 12–14). Fee: \$425. Contact Kaitlin McClure, Greenwich House Pottery; kmclure@greenwichhouse.org; www.greenwichhouse.org; 212-242-4106 ex. 25.

New York, Port Chester

"Marrying Form and Surface," with Brenda Quinn (August 5–9). Fee: \$520 non-members; \$500 members. Contact Adam Chau, Clay Art Center; adam@clayartcenter.org; www.clayartcenter.org; 914-937-2047.

New York, Utica

"Ceramics Salt + Wood Firing Workshop," with Veronica Byun + Michael Fujita (June 17–30). Fee: \$550. Contact Audrey Taylor, Munson-Williams-Proctor Arts Institute; ataylor@mwpai.edu; www.mwpai.org/learn/community-arts-education; 315-797-8260.

New York, Woodstock

"Simple and Complex, Bringing it all Together," with Mark Shapiro (June 29). Fee: \$60 members \$65 non-members.
 "Relating Form and Surface on Utilitarian Pots," with Todd Wahlstrom (September 14). Fee: \$60 members \$65 non-members. Contact Richard Conti, Woodstock Guild; ceramics@woodstockguild.org; www.woodstockguild.org; 845-679-2079.

North Carolina, Asheville

"Amazing Glaze," with Gabriel Kline (May 20–24). Fee: \$595+\$55 lab fee.
 "Handbuilding with Templates and Models," with Eric Knoche (August 19–23). Fee: \$595+\$55 lab fee. Contact Gabriel Kline, Odyssey Clayworks; odysseyclayworks@gmail.com; www.odysseyclayworks.com; 828-285-0210.

North Carolina, Brasstown

"Beginning Handbuilding and Wheel-throwing," with Bill Capshaw (June 9–15). Fee: \$630.
 "Beginning Wheel Made Easy," with Ken Shipley and Melody Shipley (June 23–29). Fee: \$630.
 "Basic Glaze Making," with Mike Lalone (July 5–7). Fee: \$354.
 "Simple and Expressive Handbuilt Pottery," with John Simmons (July 7–13). Fee: \$630.
 "Beginning Wheel and Slab—What a Combo! (Intergenerational)," with Dylan Cox (July 14–20). Fee: \$630.
 "No More Glaze-decorating Phobia!" with Diana Faris (August 18–24). Fee: \$630. Contact Tipper Pressley, John C. Campbell Folk School; tipper@folkschool.org; www.folkschool.org; (828) 837-4481.

North Carolina, Columbia

"Anything Goes: Creating Content Through Layering Techniques," with Blair Clemo (June 21–25). Fee: \$609.
 "Figurative Myth (ology)," with John Donovan (July 12–16). Fee: \$605.
 "Sketching Your Way into Clay," with Eleanor Anderson (July 26–30). Fee: \$614.
 "Hand-building and Surface Decoration," with Nancy Gardner (August 9–13). Fee: \$566.
 "Graphic Pots: Screen Printed Surfaces," with Jason Burnett (August 23–27). Fee: \$410. Contact Jane Winborne, Pocosin Arts School of Fine Craft; info@pocosinarts.org; https://pocosinarts.org; 252-796-2787.

North Carolina, Mars Hill

"MHCCA Summer Workshop Series," with Tara Wilson, Chandra DeBuse, Ben Carter, Josh Copus (June 2–29). Fee: \$500 per class, room/meals \$282. Contact Shane Mickey, Mars Hill Center for Ceramic Arts; dmickey@mh.u.edu; www.facebook.com/Marshillcenterforceramicarts; 828-467-1208.

North Carolina, Penland

"Tricks of the Trade," with Deborah Schwartzkopf (May 26–June 7). Fee: \$1460.
 "Traditional Pot Making of Ghana and Nigeria," with Winnie Owens-Hart (May 26–June 7). Fee: \$1460.
 "The Whole Pot," with Naomi Dalgligh and Michael Hunt (June 9–21). Fee: \$1460.
 "Tile Making," with Anat Shiftan (June 9–21). Fee: \$1460.
 "Woodfiring and the Expressive Hand," with Catherine White (June 23–July 5). Fee: \$1460.
 "Coiling with Clarity," with David Eichelberger (June 23–July 5). Fee: \$1460.
 "Boundless Form, Boundless Surface," with Sean O'Connell (July 7–19). Fee: \$1460.
 "Slipcast Design: Molds and Surfaces," with Daniel Garver and Nick Moen (July 7–19). Fee: \$1460.
 "Wood, Salt, and Soda!" with Richard Burkett and Joe Molinaro (July 21–August 6). Fee: \$1851.
 "Simply Handbuilt," with Joseph Pintz (July 21–August 6). Fee: \$1851.
 "Object Making on the Wheel," with Virginia Scotchie (August 11–23). Fee: \$1460.
 "When Clay Becomes Skin," with Arthur Gonzalez (August 11–23). Fee: \$1460.
 "Exploring Natural Materials in Ceramics," with Hitomi and Takuro Shibata (August 25–31). Fee: \$826.
 "Playing with Porcelain," with Bryan Hopkins (August 25–31). Fee: \$826. Contact Sarah Parkinson, Penland School of Crafts; sarahparkinson@penland.org; https://penland.org; 828-765-2359.

North Carolina, Sylva

"Summer Arts Workshop Series," with Maggie Jaszczak and Ronan Peterson (June 17–28). Fee: \$645–\$650, Lab Fee: \$60–\$75. Contact Norma Hendrix, Cullowhee Mountain Arts; norma@cullowheemountainarts.org; www.cullowheemountainarts.org; 828-342-6913.

Ohio, Dayton

"Hands-on Workshop with Heesoo Lee," (August 2–4). Fee: \$165. Contact Erin Lambers, Cornell Studio Supply; Cornellstudiosupply@gmail.com; www.cornellstudiosupply.com; 937-454-0357.

Ohio, Oxford

"Carve Clay," with Julie Woodrow (June 24–28). Fee: \$40–50 plus registration. Contact Ron Stevens, Craft Summer—Miami University; craftsummer@miamioh.edu; 513-529-7395; http://miamioh.edu/cca/craftsummer.

Oregon, Corbett

"Sculpting Story Boats," with Deb McCunn (August 4–10). Fee: \$1272. Contact Kristin Solomon, Creative Arts Community; info@creativeartscommunity.org; www.creativeartscommunity.org.

Oregon, Otis

"Hand Building: Abstracted Forms," with Ruri (July 15–18). Fee: \$460.
 "Spontaneous Clay: Sculpting with Paper Clay Slabs," with Michele Collier (August 12–13). Fee: \$285. Contact Sitka Center for Art and Ecology; info@sitkacenter.org; www.sitkacenter.org; 541-994-5485.

Pennsylvania, Farmington

"Community Wood Firing," with Daniel Tomcik (May 31–June 2). Fee: \$200 member/\$230 non-member.
 "Studio Tricks of the Trade," with Dan Kuhn (June 8–9). Fee: \$295 member/\$325 non-member.
 "Introduction to Handbuilding (ages 14–adult)," with Meghan Burke (June 15). Fee: \$165 member/\$195 non-member.
 "Wheel-Throwing 101 (ages 14–adult)," with Travis Winters (June 16). Fee: \$165 member/\$195 non-member.
 "Pinching and Coiling: Handbuilding with Clay (ages 14–adult)," with Meghan Burke (June 22). Fee: \$165 member/\$195 non-member.
 "Keystone Ceramics Forum," with Kurt Anderson, Hannah Pierce (July 5–6). Fee: TBD.
 "Introduction to Wheel Throwing," with Stacy Larson (July 8–12). Fee: \$550 member/\$580 non-member.
 "TEEN WEEK: Exploring Dimension in Clay (ages 14–17)," with Hannah Pierce (July 14–19). Fee: \$550 member/\$580 non-member.
 "The Narrative Figure," with Kyle and Kelly Phelps (July 22–26). Fee: \$595 member/\$625 non-member.
 "Playing, Porcelain, and Winning!" with Bryan Hopkins (July 24–28). Fee: \$550 member/\$580 non-member.
 "Don't Sweat the Technique," with Kurt Anderson (July 29–August 2). Fee: \$550 member/\$580 non-member.
 "Educators' Retreat: Murals in Clay," with Chuck Purviance (August 5–9). Fee: \$550 member/\$580 non-member.
 "Stroke and Stoke: Paintbrush Making and Wood Kiln Firing," with Troy Bungart and Daniel Tomcik (August 12–16). Fee: \$595 member/\$625 non-member.
 "Altered Elegance," with Martha Grover (August 19–23). Fee: \$550 member/\$580 non-member.
 "Soft Slab: Design and Build," with Jeremy Wallace (August 31–September 2). Fee: \$395 member/\$425 non-member.
 Contact Dean Simpson, Touchstone Center for Crafts; dsimpson@touchstonecrafts.org; 724-329-1370; twinters@touchstonecrafts.org; https://touchstonecrafts.org.

Pennsylvania, Little Meadows

"Throwing Large: Method Not Macho," with Kevin Crowe (June 8–9). Fee: \$275. Contact Ruth Cohen and Archie Johnson, Mud and Fire Potters; mudandfirepotters@aol.com; www.mudandfirepotters.com; 570-623-3335.

Pennsylvania, Millheim

"Keep Practicing Throwing," with Simon Leach, Two days each: (June 8–9) (June 29–30) (July 6–7) (July 20–21) (August 3–4) (August 17–18). Fee: \$330. Contact Simon Leach, Simon Leach Pottery; simonleachpottery@gmail.com; 814-349-5805; www.simonleachpottery.com.

Pennsylvania, Wallingford

"Soda Firing Theory: Altered and Carved Forms," with Lisa York (July 19–23). Fee: \$345. Contact Tracy Buchanan, Community Arts Center; info@communityartscenter.org; www.communityartscenter.org; 610-566-1713.

Continued on page 72.

“Light as a Feather”



NEW! Thermal-Lite™

Advanced Formula NSiC Shelves

Rating: Cone 16
Won't Warp
No Need to Rotate
Super Light
Super Thin
Easy to Load
**Round, Squares,
& Rectangles for
Gas Kilns &
Electric Kilns**
Made in Germany
Financing Available
Great Selection.

Special Sale Prices!



www.baileypottery.com



Frosted Mint

Cone 6 glazes and more!



1-844-849-9994 · clayscapespottery.com



the
NEW
OMNIDIRECTIONAL
EXTRUDER

- Electric
- Variable speed
- Omnidirectional
- Rugged
- Water resistant
- Plug & play
- USA made

www.mudtools.com



www.sio-2.com

European Leading Manufacturer of Ceramic Clay Bodies

Warehouse/Delivery
Savannah, GA
Headquarters
Miami, FL



Collet Clays Corp. | Email: orders@sio-2.com | Phone: (786) 431-3393 (9am-1pm EST)

Tennessee, Gatlinburg

"Porcelain Cups And Soda Firing," with Matt Long (June 2–8). Fee: \$600.
 "Building Big...With A Small Kiln," with Andrea Keys Connell (June 9–15). Fee: \$600.
 "Clay Pots And Color Spots," with Mark Errol (June 9–15). Fee: \$600.
 "Hollow Build The Self-Referential Bust," with Misty Gamble (June 16–22). Fee: \$600.
 "Wood Fire Works," with Josh Copus (June 30–July 13). Fee: \$1050.
 "The Ceramic Figure Dissected," with Richard W. James (June 30–July 13). Fee: \$1050.
 "Strata: Utilizing Slips," with Ronan Peterson and Teresa Pietsch (July 21–27). Fee: \$600.
 "Hollow Core Construction: A Unique Figurative Sculptural Approach," with Bobby Scroggins (July 21–27). Fee: \$600.
 "Vividly Subtle: Pastel Flashing In Soda," with Austin Riddle (July 28–August 3). Fee: \$600.
 "Carving Commentary," with Steven Cheek (August 4–10). Fee: \$600.
 "Wood Firing And Reduction Cooling," with Seth Green (August 4–10). Fee: \$600.
 "Hand Building: Techniques, Tips, and Tricks," with Sunshine Cobb (August 11–17). Fee: \$600.
 Contact Deborah Sosower, Arrowmont School of Arts and Crafts; dsosower@arrowmont.org; www.arrowmont.org; 865-436-5860.

Tennessee, Nashville

"Master Series Workshop," with Ben Carter (June 29). Fee: \$225. Contact Danielle McDaniel, The Clay Lady's Campus Studios, Artist Co-op, Galleries & Mid-South Ceramics; events@theclaylady.com; www.theclaylady.com/3-day-demonstration-with-beth-cavener-featuring-her-larger-than-life-figures; 615-242-0346.

Tennessee, Sewanee

"Pottery for Presentation," with Jeremy Randall (June 9–15). Fee: \$1050.
 "Pots that Pour, Glazes that Work," with Ron Roy and Liz Willoughby (June 16–22). Fee: \$1050. Contact Claire Reishman, Shakerag Workshops; info@shakerag.org; www.shakerag.org; 931-463-2123.

Tennessee, Smithville

"Hand Building: Beginner to Advanced Techniques," with Sunshine Cobb (June 2–7). Fee: \$550.
 "Ceramics 101 for Educators," with Jessica Wilson (June 9–14). Fee: \$550.
 "Laser Sgraffito and Wooden Stamp Making," with Rachel Clark (July 5–7). Fee: \$300.
 "Pottery on the Wheel: Bowls to Bottles and Everything In Between," with David Heustess (July 14–19). Fee: \$550.
 "Altered and Assembled Clay," with Andrew Clark (July 21–26). Fee: \$550.
 "The Basics and Beyond: Soft Slab Handbuilding," with Liz Zlot Summerfield (August 2–4). Fee: \$300. Contact Gail Gentry, Appalachian Center for Craft; craftcenter@tntech.edu; www.tntech.edu/craftcenter/workshops/summer-workshops; 931-372-3051.

Texas, San Marcos

"Big Clay 1," with Billy Ray Mangham and Jess Wade (June 10–14). Fee: \$550.
 "Big Clay 2," with Billy Ray Mangham and Carl Block (June 24–28). Fee: \$550. Contact Billy Ray Mangham, Eye of the Dog Art Center; billyraymangham@gmail.com; www.eyeofthedog.com; 512-558-1723.

Massachusetts, Bennington

"From Form to Fire," with Bob Green (July 28–August 3). Fee: \$1075. Contact Jackie Knight, Art New England; jknight@massart.edu; 617-879-7164.

Vermont, Pownal

"Nature Tradition: Cultivating Inspirations in Clay," with Adam Field (June 9–13). Fee: \$800–\$925. Contact Jackie Sedlock, Jackie Sedlock Pottery; jsedlock@gmail.com; www.jackiesedlock.com; 802-823-7977.

Virginia, Alexandria

"Traditional Japanese Ceramics Techniques," with Hitomi and Takuro Shibata (June 14–16). Fee:

\$180. Contact Ariane D'Souza, The Art League; ariane@theartleague.org; www.theartleague.org/school/course_desc.php?class_id=8212; 703-683-2323.

Virginia, Charlottesville

"Beyond Round: Altering Thrown Forms," with Nan Rothwell (July 20–21). Fee: \$240.
 "Mastering Lids and Handles," with Nan Rothwell (July 22–23). Fee: \$240. Contact Nan Rothwell, City Clay and Nan Rothwell Pottery; nan@nanrothwellpottery.com; www.cityclayville.com; 434-293-0808.

Virginia, Lorton

"Mono-Printing Clay: Image and Form," with Jeremy Jernegan (June 1). Fee: \$100. Contact Dale Marhanka, Workhouse Arts Center—Ceramics Program; dalemarhanka@workhousearts.org; www.workhousearts.org; 703-584-2982.

Virginia, Roanoke

"Women Working With Clay Symposium," with Jen Allen, Beth Lo, Liz Lurie, Tip Toland (June 10–13). Fee: \$395. Contact Christine Powell, Hollins University; cpowell@hollins.edu; www.hollins.edu/www; 540-362-6225.

Virginia, Waynesboro

"Glaze Like a Pro: Learn to Get the Most Out of Your Electric Kiln," with Jake Johnson (June 22–23). Fee: \$225.
 "Beyond Basic Wheel Throwing: Handles, Lids, Altering, and More," with Jake Johnson (July 27–28). Fee: \$225. Contact Jake Johnson/Katie Densberger, Make Waynesboro Clay Studio; makewaynesboro@gmail.com; www.makewaynesboro.com; 540-445-1072.

Wisconsin, Dodgeville

"Wood Fire—Soda Workshop," with Guillermo Cuellar and Joe Cole (June 2–8). Fee: \$350.
 "Barrel Arch Kiln Building with Potters for Peace," with Robert Pillers, Potters for Peace Director (June 9–15). Fee: \$270.
 "Primitive Kiln Building and Ancient Ceramic Techniques of the Southwest," with Don Hall (June 17–22). Fee: \$325.
 "Beyond the Bauhaus—The Art of the Vessel (all levels)," with Phil Lyons (June 23–28). Fee: \$235.
 "Throwing Precise, Yet Relaxed, Tableware," with Steven Hill (July 7–12). Fee: \$425.
 "Gestural Throwing/Atmospheric Effects for Electric Firing," with Steven Hill (July 14–19). Fee: \$425.
 "Two Demos a Day!" with Kathy King and Ali Olson (July 21–26). Fee: \$235.
 "Ceramic Garden Totems," with Liz Goff (July 27–28). Fee: \$180.
 "Pottery: Forms and Attachments," with Linda Christianson (July 28–August 2). Fee: \$325. Contact Jennifer Mally, Adamah Art Center; jennifer@bethelhorizons.org; www.adamahartstudio.org; 608-574-8100.

Wisconsin, Fish Creek

"Introductory Utilitarian Ceramic Vessel Making," with Jared Janovec (June 10–13). Fee: \$485 for members, \$525 for non-members.
 "The Figure in Clay," with Robin Power (July 22–24). Fee: \$415 for members, \$445 for non-members.
 "Ornate Surface: How to Embellish Forms Creatively with Commercial Sprigs and One-Part Molds," with Kate Maury (August 7–10). Fee: \$510 for members, \$550 for non-members. Contact Elysia Michaelsen, Peninsula School of Art; workshop@peninsulaschoolofart.org; www.peninsulaschoolofart.org; 920-868-3455.

Wisconsin, Herbster

"The Best Little Wood-Fire Workshop," with Mike Weber (June 8–23). Fee: \$645. Contact Mike Weber, Weberwoodfire; lkenmonth@yahoo.com; www.weberwoodfire.com; 715-774-3707.

Africa, Accra Nungua

"Artist Residency," with Indigenous Ghanaian Potters (August 17–30). Fee: \$1800. Contact Ellie Schimelman, Cross Cultural Collaborative; aba@culturalcollaborative.org; www.culturalcollaborative.org; 857-261-0474.

Africa, Denu

"2019 Traditional Pottery in Ghana," with Traditional Female Master Builders (August 1–18). Fee: \$2075 1-on-1 traditional instruction/room and board/all intra-country travel+airport/clay/firings.
 "2019 Traditional Pottery in Ghana," with Traditional Female Master Builders (August 9–September 5). Fee: \$2075 1-on-1 traditional instruction/room and board/all intra-country travel+airport/clay/firings. Contact Winnie Owens-Hart, ILE AMO Research Center; africancraftstravel@yahoo.com; www.africancraftstravel.com; 703-754-1307.

Canada, British Columbia, Burnaby

"Summer Pottery Retreat," with Sabrina Kesula (June 24–28). Fee: \$223 (\$295 CA). Contact Friederike Rahn, Shadbolt Centre for the Arts; friederike.rahnburnaby.ca; https://webreg.city.burnaby.bc.ca/webreg/Activities/ActivitiesAdvSearch.asp; 604-205-3012.

Canada, Ontario, Haliburton

"Pottery—Throwing Camp Intermediate/Advanced," with Rene Petitjean (June 24–28). Fee: \$195 (\$459 CA) (includes 3 bags of clay).
 "Pottery—Beginners," with April Gates (July 1–6). Fee: \$375 (\$497 CA) (includes 1 bag of clay).
 "Pottery II," with Lisa Barry (July 8–13). Fee: \$375 (\$497 CA) (includes 1 bag of clay).
 "Pottery—Form and Style," with Duncan Aird (July 15–20). Fee: \$375 (\$497 CA) (includes 1 bag of clay).
 "Pottery—Composite Construction and Complex Handles," with Tony Clennell (July 22–27). Fee: \$375 (\$497 CA) (includes 1 bag of clay).
 "Garden Art in Clay," with Paul Portelli (July 22–26). Fee: \$312 (\$414 CA) (includes 1 bag of clay).
 "Pottery Throwing Camp—Intermediate/Advanced," with Rene Petitjean (July 29–August 2). Fee: \$346 (\$459 CA) (includes 3 bags of clay).
 "Pottery—Raku: Copper Matte, Patinas and Lustres," with Michael Sheba (August 5–10). Fee: \$392 (\$519 CA) (includes 1 bag of clay).
 "Pottery—Understanding Glazes," with Michael Sheba (August 12–17). Fee: \$375 (\$497 CA) (includes 1 bag of clay).
 "Youth/Teen Pottery," with Lisa Barry (August 19–23). Fee: \$246 (\$325 CA) includes 1.5 bags of clay (+\$10 material fee payable to instructor). Contact Haliburton School of Art + Design, Fleming College; createit@hsta.ca; www.hsta.ca; 705-457-1680.

Canada, Nova Scotia, Lunenburg

"Go Figure," with Chippie Kennedy (July 1–5). Fee: \$500.
 "Pots, Purpose, and Place," with Walter Ostrom and Katrina Chaytor (July 8–19). Fee: \$895.
 "Bowl-O-Rama," with Douglas Bamford and Marla Benton (July 29–August 2). Fee: \$450. Contact Hilda MacDonald, Lunenburg School of the Arts; learn@lunenburgarts.org; www.lunenburgarts.org; 902-640-2013.

Canada, Ontario, Toronto

"British Potter Potting," with Lisa Hammond, John Colbeck, Kitty Shepherd (May 31–June 2). Fee: \$275. Contact Jenanne Longman, Fusion: Ontario Clay and Glass Association; fusion@clayandglass.on.ca; www.clayandglass.on.ca; 416-438-8946.

Canada, British Columbia, Victoria

"Sculpture Using Mesh and Slips," with Tina Fyfe (June 22–23). Fee: \$235, including lunch and coffee.
 "Handbuilding—Tips and Tricks," with Sunshine Cobb (June 24–28). Fee: \$550, including lunch and coffee.
 "Narrative Sculpture," with Joe Batt (June 24–28). Fee: \$550, including lunch and coffee.
 "Creative Extrusions," with Linda Doherty (June 29–30). Fee: \$225, including lunch and coffee.
 "Throwing and Altering," with Conner Burns (July 1–5). Fee: \$525, including lunch and coffee.
 "Slabs and Templates," with Jeremy Randall (July 1–5). Fee: \$550, including lunch and coffee.
 "Amazed and Glazed," with Richard Burkett (July 1–5). Fee: \$570, including lunch and coffee. Contact Meira Mathison, Metchosin Intl. Summer School of the Arts; missa@missa.ca; www.missa.ca; 250-391-2415.

Continued on page 74.

**CONTINENTAL CREATES CLAY
 CLAY ARTISTS CREATE ART
 ART CREATES BEAUTY
 BEAUTY CAN BE DANGEROUS
 CREATE BEAUTY RESPONSIBLY**



Denver:
 5303 East 47th Avenue, Unit N
 Denver, CO 80216

Minneapolis:
 1101 Stinson Blvd NE
 Minneapolis, MN 55413

800.432.2529 www.continentalclay.com

MKM POTTERY Tools

Visit us at NCECA Booths 600, 602 & 604
 Minneapolis, March 27-29



SCM-003



SCM-149



SCL-02

SCM-179



www.mkmpotterytools.com

Phone: (920) 903-8918

orders@mkmpotterytools.com



THE BEST IN CONTEMPORARY AMERICAN FUNCTIONAL CERAMICS

27th ANNUAL
**STRICTLY
 FUNCTIONAL
 POTTERY NATIONAL**

2019 JUROR:
**MALCOLM
 MOBUTU SMITH**



2018 FIRST PLACE: Aysha Peltz, Whitingham, VT

**CALL FOR
 ARTISTS**

2019 SFPN EXHIBIT

Online applications must be submitted by **June 1, 2019**
 or by midnight **June 10** with a late fee.

For more information and the 2019 SFPN application:

WWW.STRICTLYFUNCTIONALPOTTERY.NET

Exhibit is held at Kevin Lehman's Pottery at
 580 S. Prince Street in downtown Lancaster, PA

717-509-7547

EXHIBITION

DATES:
 SEPTEMBER 21 to
 OCTOBER 26, 2019

RECEPTION:
 FRIDAY, SEPTEMBER 20

© 2019 Strictly Functional Pottery National. All rights reserved.

Like us on Facebook
 Fans of SFPN



NEW ENGLAND
 A MassArt program

Beautiful scenery, inspiring faculty, friendly colleagues,
 great food, and 24 hour studio access. Classes in
 ceramics, sculpture, painting, drawing, printmaking,
 and book making.

WEEK THREE
 July 28–August 3

Bob Green
 From Form to Fire



Visit MassArt.edu/ane or contact Jackie Knight:
jknight@massart.edu or 617-879-7164



Left: Participant with the donkey model at the Taos Art School Donkey Sculpture Workshop in Taos, New Mexico. **Right:** Students in the 2015 workshop, *The Figure Dynamic: Creating Narratives in Half Scale and Under*, taught by Tip Toland, at Haystack Mountain School of Crafts, Deer Isle, Maine.

Canada, Alberta, Red Deer

"Series Summer Arts School," with various national and international instructors (July 8–August 1). Fee: varies. Contact Joyce Howdle, Red Deer College; www.rdc.ab.ca/series; 403-342-3526.

Denmark, Sjælland, Skælskør

"Summer School: Atmospheric Firing," (July 1–31). Fee: \$1291 (\$8500 DKK).
 "Communal Wood-firing," (July 15–21). Fee: \$424 (\$2790 DKK).
 "Intensive Plaster Workshop," (July 29–August 2). Fee: \$623 (\$4100 DKK) for 5 days (not including accommodation).
 "Summer School: New Technologies and Design Processes," (August 1–31). Fee: \$1291 (\$8500 DKK).
 "Intensive Plaster Workshop," (August 5–9). Fee: \$ 623 (\$4100 DKK) for 5 days (not including accommodation). Contact Hattie Thomas, Guldagergaard ICRC; hattie@ceramic.dk; evelin@ceramic.dk; www.ceramic.dk; 455-819-0016.

France, Cordes sur Ciel

"Spring in La Borne," with Frank Theunissen (March 2–9). Fee: \$720 (€635).
 "Terra Sigillata," with Fernand Everaert (April 6–12). Fee: \$674 (€595).
 "Rough and Spontaneous Tableware," with Pep Gomez (July 11–19). Fee: \$901 (€795).
 "Porcelain Jewelry," with Loes Theunissen (August 2–10). Fee: \$788 (€695).
 "Lightly Salted," with Monika Debus (August 18–26). Fee: \$901 (€795).
 "Throw slow/relax on the wheel in La Borne," with Richard Dewar (November 3–10). Fee: \$833 (€735).
 "Throwing Class," with Frank Theunissen (April 26–May 4). Fee: \$788 (€695).
 "Porcelain, the White Gold," with Fritz Rossmann (June 20–28). Fee: \$901 (€795). Contact Frank Theunissen, LaCéramique; Frank@laceramique.com; www.laceramique.com; 33 56353 7297.

France, Cher Henrichemont, La Borne

"Improve your throwing skills," with Christine Pedley (July 6–August 31). Fee: \$550 (€485) per week. Contact Christine Pedley, Atelier La Borne Ceramics; chris.pedley@orange.fr; www.chris-pedley.eu; 02 48 26 77 44.

France, Saint-Raphaël

"The Magic of Color at Your Fingertips: Painting Texture Depth with Underglazes," with Julia Feld (June 28–30). Fee: \$270 (€237). Contact Lauren Kearns, International Artists Residency Exchange; iare.kearns@gmail.com; www.internationalartist-residencyexchange.com/index.php/en/events-en.

Germany, Bavaria, Frauenau

"Dynamic Sculptures: Ceramic Spheres and Spirals," with Sabine Classen (June 8–15). Fee: \$533 (€470).
 "Ceramic Sculpture: Monument and Ornament," with Elaine Wilson (July 3–19). Fee: \$941 (€830).
 "Hot Glass and Clay: Material Polarities—Interdisciplinary Special," with Eva Masterman, Rike Scholle (July 31–August 16). Fee: \$1468 (€1295). Contact Sarah Höchstetter, Bild-Werk; info@bild-werk-frauenau.de; www.bild-werk-frauenau.de; 49 9926 180895.

Greece,Thessaloniki, Thessaloniki

"Intensive Throwing Workshop With an Introduction to Alternative Firing Techniques," with Hector Mavridis (June 1–9). Fee: \$1417 (€1250).
 "Intensive Throwing Workshop With an Introduction to Alternative Firing Techniques," with Hector Mavridis (June 16–24). Fee: \$1417 (€1250).
 "Intensive Throwing Workshop With an Introduction to Alternative Firing Techniques," with Hector Mavridis (July 1–9). Fee: \$1417 (€1250).
 "Intensive Throwing Workshop With an Introduction to Alternative Firing Techniques," with Hector Mavridis (July 15–23). Fee: \$1417 (€1250).
 "Intensive Throwing Workshop With an Introduction to Alternative Firing Techniques," with Hector Mavridis (August 16–24). Fee: \$1417 (€1250). Contact Hector Mavridis, The Almond Grove—Workshops in Ceramics; hectormavridis@gmail.com; www.hectormavridis.com; 0030 2310450451.

Italy, Florence, Certaldo

"Inspirations from the Italian Renaissance," with Lisa Reinertson (June 2–15). Fee: \$2834 (€2500).
 "Jewelry in Porcelain," with Luca Tripaldi (June 9–15). Fee: \$1315 (€1160).
 "Clay Waves," with Mette Maya Gregersen (June 30–July 6). Fee: \$1247 (€1100).
 "Exploring Form for the Table," with Sandy Lockwood (June 30–July 13). Fee: \$2721 (€2400).
 "Rainbows," with Luca Tripaldi (July 14–20). Fee: \$1361 (€1200).

"The Vessel/Figure Revisited," with Lisa Ehrich (July 16–29). Fee: \$2381 (€2100).
 "Summer Throwing," with Franco Rampi (July 25–August 3). Fee: \$1315 (€1160).
 "Stoneware Throwing," with John Colbeck (August 4–17). Fee: \$2494 (€2200).
 "Porcelain Throwing," with John Colbeck (August 18–31). Fee: \$2494 (€2200). Contact Claudia Bruhin, La Meridiana International Ceramics School; info@lameridiana.fi.it; www.lameridiana.fi.it; 39 377 27 095 00.

Italy, Marsciano (PG), Marsciano

"Wheel Course," with Luca Leandri (June 1–5). Fee: \$454 (€400).
 "Wheel Course—beginners or advanced," with Luca Leandri (June 1–August 31). Fee: \$79 (70€) by day (intensive time).
 "Bucchero Etrusco," with Luca Leandri (June 1–August 31). Fee: \$125 (€110) by day (intensive time).
 "Raku Pottery," with Luca Leandri (June 1–August 31). Fee: \$108 (€95) by day (intensive time). Contact Luca Leandri and Elisabeth Corrao, la Fratta Art-House; info@lafatta.it; www.corsiceramica.it; 0039332688800.

Mexico, San Miguel de Allende

"Ceramic Sculpture Workshops," with Kelly Rathbone, Tip Toland, Kirsten Stingle (see website for dates). Fee: \$800–1200. Contact Annie Evans, Move to San Miguel Seminar; annie2evans@yahoo.com; www.sanmigueldeallendeceramicworkshops.com; 404-373-0699.

Mexico, BC, Todos Santos

"Baja V9 Multi-Fuel Kiln Build + 1st Firing," with Ralph Scala with guests Sam Harvey and Christa Assad (May 20–31). Fee: \$1795.
 "Movement and Balance in Body and Clay," with Tara Wilson and local guest yoga instructor (October 28–November 8). Fee: \$1795. Contact Christa Assad, Taller de Terreno; tallerdeterreno@gmail.com; www.tallerdeterreno.org; 415-503-8617.

United Kingdom, Powys, Abercrave

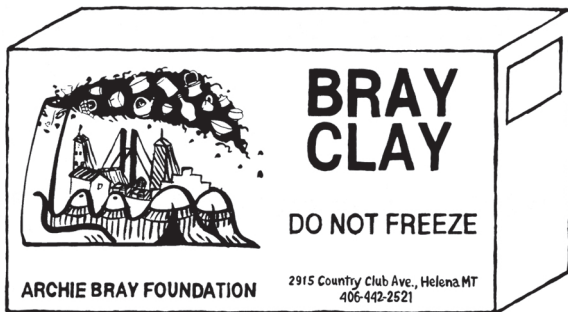
"Learning to Throw Big Pots," with Joanna Howells (August 2–5). Fee: \$480. Contact Joanna Howells, Joanna Howells Ceramics; studio@joannahowells.co.uk; www.joannahowells.co.uk; 163-973-0014.

archiebrayfoundation CLAY BUSINESS



Manufacturer of
BRAY CLAY

Distributor of
BRAY-POXY, BRAY
PATCH,
EQUIPMENT, GLAZES,
DRY MATERIALS,
SUPPLIES AND MORE!



archiebrayclay.com

*find us at NCECA booth 109

406/442.2521

SUN VALLEY, IDAHO

2019 SPRING & SUMMER WORKSHOPS



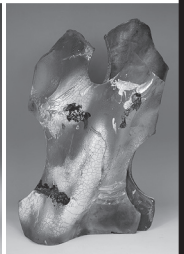
PATTI WARASHINA
April 29, 30
Interpretive Figurative Sculpture



EVA CHAMPAGNE
June 7, 8, 9
*The Ceramic Surface,
A Freestyle Approach*



MARK KNOT
June 24, 25, 26
*Attacking Color,
Space & Form*



JIM ROMBERG
July 27, 28
RAKU



NATIONAL
ENDOWMENT
FOR THE ARTS



**Boulder
Mountain
Clayworks**

471 E. 10th St • B6, Ketchum, ID 83340

For more information 208-726-4484

REGISTRATION REQUIRED • 501(c)3 non-profit organization

arts
IDAHO

bouldermtnclay@gmail.com • www.bouldermtnclay.org



Join ICAN in tropical Bali, **October 14–24, 2019**
for a hands-on ceramic workshop and retreat at
the Gaya Ceramic Arts Center.

Contact Holly Goring, ICAN Manager, at
hgoring@ceramics.org or 614-895-4213.
Learn more at ceramicartsnetwork.org/events.



iCAN International
CERAMIC
ARTISTS
NETWORK



Join ICAN in Barcelona, Spain **May 3–14, 2019**
for a hands-on ceramic workshop at
ElTornBarcelona and an exhilarating tour of
Spanish art, culture, and cuisine.

Contact Holly Goring, ICAN Manager, at
hgoring@ceramics.org or 614-895-4213.
Learn more at ceramicartsnetwork.org/events.

iCAN International
CERAMIC
ARTISTS
NETWORK